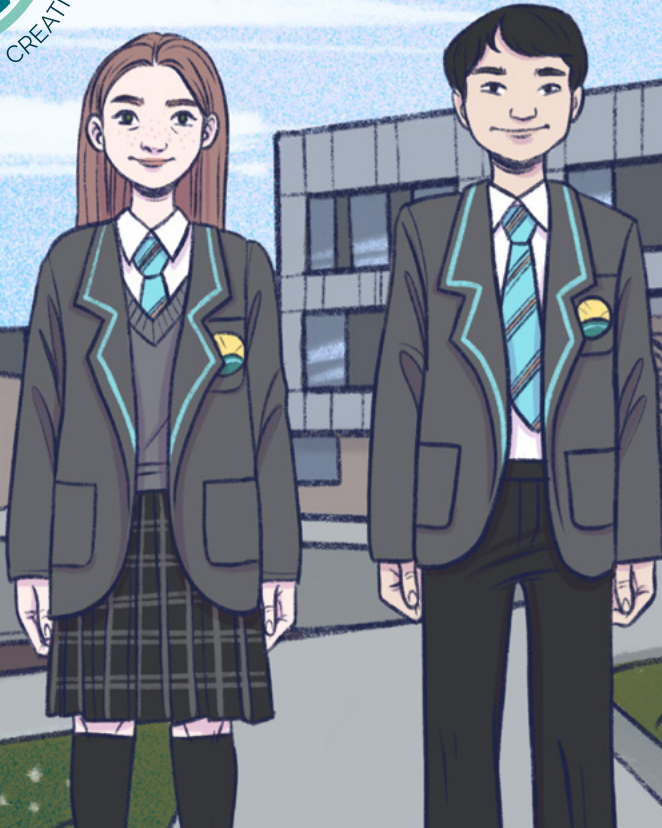




# WELCOME TO GLEBE FARM SCHOOL

Ambition, Belonging, Creativity



# WHAT WILL I NEED FOR MY FIRST DAY?

School blazer

White shirt or blouse with collar

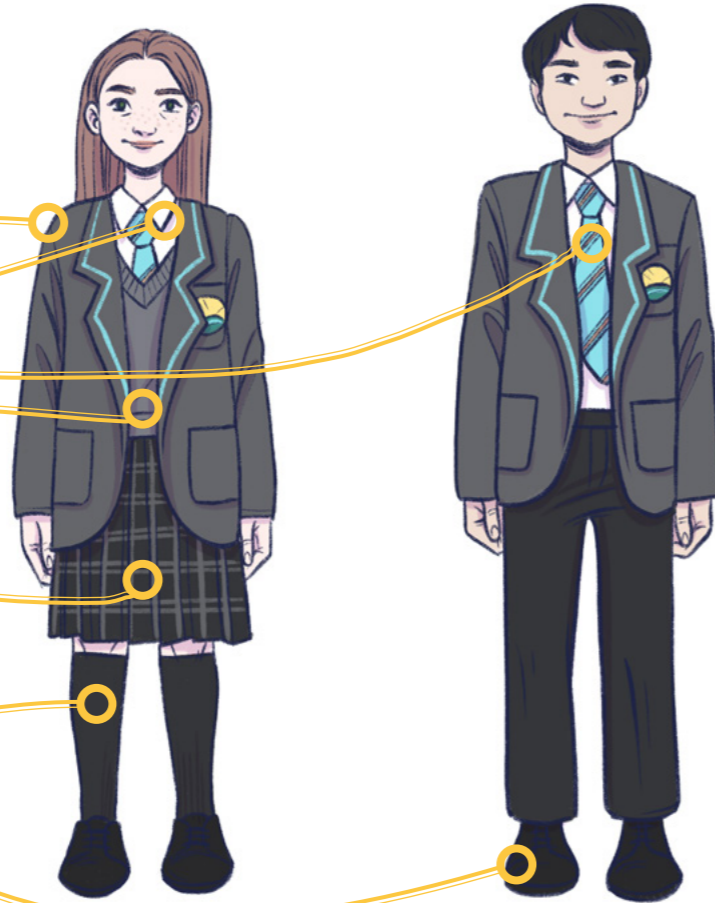
House tie

Slate-grey V-neck jumper or sleeveless school V-neck jumper with piping and logo

Checked pleated skirt or black trousers in a classic fit

Plain black socks or tights

Polishable black school shoes (office style)



## PE KIT

For PE lessons, you will need a school PE shirt with our logo, black school shorts or skorts (logo optional), black football socks, trainers for indoors, football boots with plastic safety studs, shin pads, gum shields and a black kit bag.

## EQUIPMENT

You should have a black backpack with the school logo, and you will need to bring:

- Two black pens
- Pencil
- Ruler
- Reading book
- Water bottle labelled with your name
- One purple pen
- One red pen
- Rubber
- Scientific calculator



# WHAT WILL BE EXPECTED OF ME?



We want you to develop **integrity**, **responsibility**, **endeavour**, **bravery** and **empathy**. These qualities are also our school values, which you should always follow.

**Integrity** means upholding the highest standards of honesty, standing up for what is right, and developing a strong moral compass so that you do the right thing, even when no one is watching.

**Responsibility** means you will take responsibility for your actions and choices. You will make others feel valued and respected and contribute to and fully embrace our school community.

**Endeavour** means you will always endeavour to do your best to face the challenges of school life and beyond. You will strive to be consistent in everything you do and aspire for greatness.

**Bravery** means being brave when taking risks and facing your fears. It also means being strong for others when they question their own strength. Remember, it is going to be hard but not impossible.

**Empathy** means you can relate to and connect with others to inspire and empower their lives. You demonstrate humility when supporting others to be able to see, hear and feel from the position of another.

## What is good behaviour?

At Glebe Farm School, you behave well by:

- Being **ready** to learn
- Being **respectful** to all members of our community
- Conducting yourself in a **safe** manner

You should also go above and beyond what we expect of you, both in and out of school.

At the start of each day and at the end of social times, you will line up in the playground in your crew, in register order.

You should always move around school calmly and respectfully. Walk along corridors in single file on the left-hand side, following the one-way system. You will have four minutes to get to each class.

## Our rewards system

You will receive Value points for:

- Demonstrating one of the Glebe Values
- Being Learner of the Week
- Taking part in House competitions
- Being Crew Champion
- Being Values Champion
- Receiving the Headteacher Award

150 Value points = Bronze Award

300 Value points = Silver Award

450 Value points = Gold Award

600 Value points = Platinum Award

## What are the House names at Glebe Farm School?

Our Houses are named after outstanding pioneers in their fields. They are:



**Khan House** (yellow) after Tessa Khan, an advocate for social justice and human rights.



**Blyth House** (blue) in recognition of James Blyth, a successful entrepreneur who has contributed to the renewable energy sector.



**Thunberg House** (white) after Greta Thunberg, a young Swedish environmental activist.



**Attenborough House** (red) in recognition of Sir David Attenborough, a world-renowned naturalist, broadcaster and environmentalist.

# WHAT WILL A SCHOOL DAY LOOK LIKE?



Your school day will look like this:

- **8.20am**  
Gates open
- **8.25am**  
First registration bell
- **8.30am to 9am**  
Crew Time
- **9am to 10am**  
Session 1
- **10am to 11am**  
Session 2
- **11am to 11.20am**  
Break
- **11.20am to 12.20pm**  
Session 3
- **12.20pm to 1pm**  
Lunch
- **1pm to 2pm**  
Session 4
- **2pm to 3pm**  
Session 5
- **3pm to 3.10pm**  
Crew Time
- **3.10pm to 4.10pm**  
Enrichment / extra-curricular

**Library Club is open until 4.30pm**

## What will I study at KS3?

You will study:

- Art
- Design Technology
- English
- History
- Music
- PSHE (Personal, social, health and economic)
- RSE (Relationships and Sex Education)
- Computing
- Drama
- Geography
- Maths
- Physical Education
- Religious Education (which includes Ethics and Philosophy)
- Science
- Spanish

## Extended Learning

Extended Learning is important because it improves your understanding of what you have learned in your lessons. It also helps you learn how to study independently, practise skills and develop a love of learning.

You and your parents or carers will be able to see Extended Learning assignments that have been set on ClassCharts and the date they are due. You should not leave doing your homework to the last minute, as you may need time to speak to your teacher if there is anything you do not understand.

## What are the facilities like?

We have fantastic facilities at Glebe Farm. They include:

- Sports hall
- Main school hall
- Library
- Fully equipped science labs
- Fully equipped D&T labs
- Music studios
- Fully equipped food technology labs
- ICT suite
- Multi-use Games Area
- 3G pitch
- Grass pitches



# WHAT EXTRA-CURRICULAR ACTIVITIES CAN I TAKE PART IN?

We run lots of brilliant clubs at Glebe Farm School. They are a fantastic opportunity to enjoy a hobby, try something new and make new friends.

If you like sports, we have basketball, football, netball and badminton clubs. And for those who love music, we have an orchestra and choir.

Other clubs include:

- History
- Spanish
- Maths Challenge
- Lego
- Art
- Cooking
- Newspaper
- Drama



# WHO DO I SPEAK TO IF I AM UNHAPPY, WORRIED OR NEED HELP?

The staff at Glebe Farm will get to know you well and understand your needs.

If you feel unhappy you can speak to any member of our Glebe Farm community, which might include your Crew Lead, Head and Assistant Heads of Year, Teachers or Teaching Assistants, Inclusion Assistants, Pastoral Mentors and members of the Special Educational Needs Team. If you need help from someone outside school, we are here to support you.



# THE PANTRY KITCHEN

You can get breakfast, a breaktime snack and lunch at The Pantry Kitchen.



## Breakfast

Get your day off to a good start with cereal, croissants, toast and other breakfast snacks.

## Morning break

If you need a mid-morning snack, our delicious selection includes croissants, pain au chocolate, cinnamon swirls, wraps, flatbreads, wedges, cheeseburgers, bagels, sausage rolls and much more.

## Lunch

Our cooked meal menu changes every three weeks and includes a variety of dishes to suit all tastes and diets. For instance, you can choose from pizza, roast dinners, pasta, vegetarian dishes, fish and chips, cottage pie, chicken and rice burritos and jacket potatoes.

If you don't fancy a hot meal, you can choose a sandwich, baguette or wrap at Deli 2006.

## Drinks

It is important to stay hydrated throughout the day. Drinks available at The Pantry Kitchen include Radnor Fizz, Radnor Splash, Viva Flavoured Milk, The Pantry Water and juice cartons.

# RESPONSIBLE IPAD USE

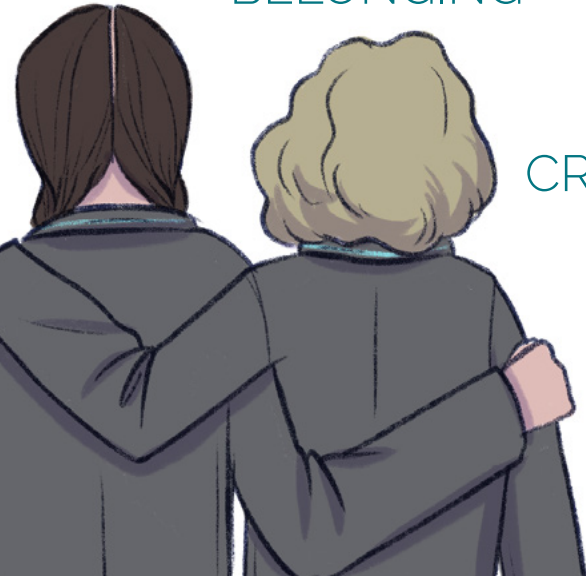
Innovative and creative learning is at the heart of developing your critical thinking skills. To ensure all our learners develop into well-rounded scholars, we provide all learners with an iPad.

We will give you information about how to use and take care of it.



# WE ARE LOOKING FORWARD TO WELCOMING YOU TO GLEBE FARM SCHOOL!

BELONGING



CREATIVITY



SCAN FOR OUR WEBSITE



AMBITION



**Glebe Farm School**

Burney Drive, Glebe Farm, Milton Keynes, MK17 8XY

**Tel:** 01908 794400

**Email:** [enquiries@glebefarmschool.co.uk](mailto:enquiries@glebefarmschool.co.uk)

**Website:** [www.glebefarmschool.co.uk](http://www.glebefarmschool.co.uk)

Devised and produced by Stoneworks Education Ltd [www.stoneworkseducation.co.uk](http://www.stoneworkseducation.co.uk)

© Stoneworks Education Limited 2014-2025. All rights reserved.