

WELCOME TO DAGENHAM PARK CHURCH OF ENGLAND SCHOOL



BELIEVE

GROW

SUCCEED

What is Dagenham Park Church of England School like?

At Dagenham Park Church of England School, we believe, we grow, we succeed.

We are a truly inclusive school, so we are committed to developing each of our students. Everything we do is aimed at giving you the habits and knowledge to develop your character, so you reach your full potential with us and in the outside world.

We want to push you academically and make the most of your creativity.

We want you to become resilient so you bounce back from setbacks and look at them as an opportunity to grow. We want you to take a full role in the life of our school.

At the end of your time with us, we want you to be brilliant communicators who will make a full contribution to the wider community, and beyond.

The first step is to **BELIEVE** in yourself.

Believe in yourself and you will **GROW**

Those who grow and develop will **SUCCEED** in school and in life.

BGS

Believe, Grow, Succeed (BGS) underpins everything we do, including our rewards system.

There are plenty of opportunities to receive BGS awards through participating in wider school life and working hard in lessons. See page 6 for details on our school rewards.

So think about what you want to achieve, set yourself some challenges and celebrate when you get there!

Faith

We are a Church of England school which means our values are based on the Christian faith. We welcome students from all faiths and students who have no faith.

Settling in

Starting secondary school is a big step so it can take a little while to adjust. Everyone feels the same, no matter how confident they may seem. We will help to make the transition as easy as possible for you, but don't be afraid to talk about anything that is worrying you. If you are struggling, let one of your teachers know. They are all here to help you.

Facilities

We have fantastic facilities at Dagenham Park, including:

- State-of-the-art classrooms
- Fully equipped science labs
- Music rooms and recording studio
- Art studios
- 300 seat theatre with professional lighting
- 80 seat performing arts studio
- Leisure centre with multi-sport facilities, including a fitness suite and AstroTurf pitches



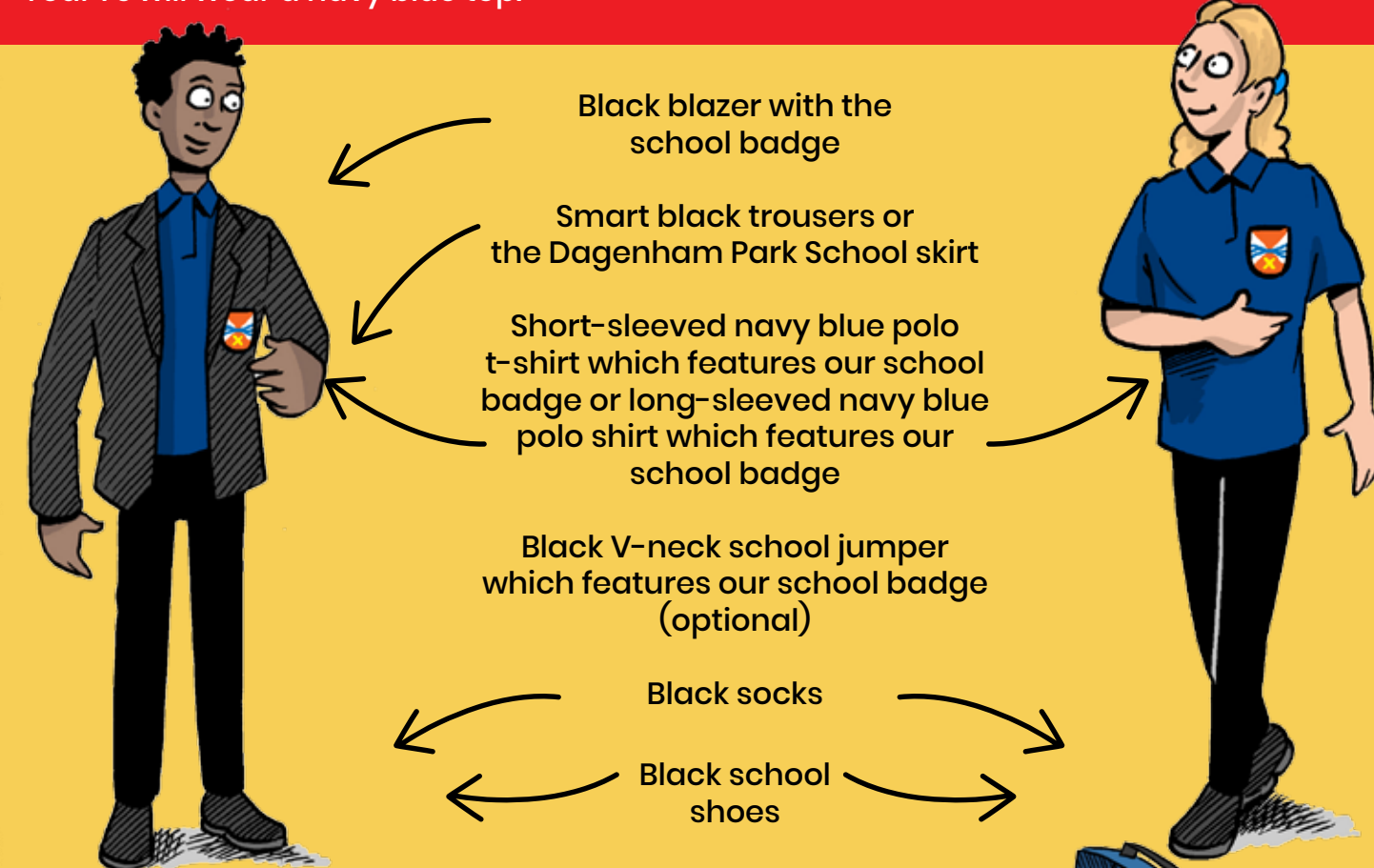
BELIEVE

GROW

SUCCEED

What will I need for my first day?

We are very proud of our brilliant school and want all pupils to wear their uniform with pride. We have a simple and comfortable uniform and expect you to wear the correct uniform from your first day. Each year group will have a different colour polo top. In 2022, Year 7s will wear a navy blue top.



Equipment

You will also need to a suitable size bag for carrying:

- School books
- PE kit (red school t-shirt, black shorts, jogging bottoms, trainers)
- Planner with timetable written/pasted into it
- Reading book
- Calculator and geometry set
- Black pens, red pens, purple pens, pencils, rubber, ruler, etc.
- Bottle for water. We have water fountains across the school



Please note that no mobile phones are to be used on the school site.

The First Day

On your first day you will attend a welcome assembly. Then you will spend some time with your Form Tutor and tutor group. Your Tutor will give you more information about the school, give you your student planner and give you a tour of the school. They will also show you how our cashless payment system works in the canteen. It's a fun day and it will give you the chance to get to know your classmates.

BELIEVE

GROW

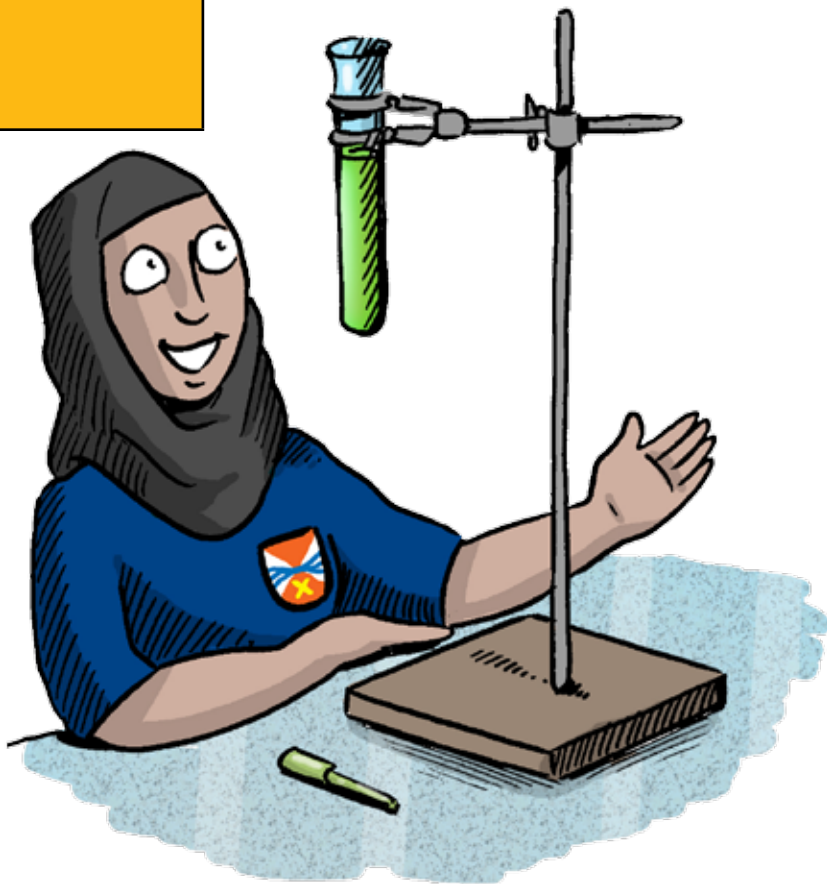
SUCCEED

What will the school day look like?

Your school day will follow a set timetable.

The school day runs from **8:30 – 15:00**

8:30 – 9:30	Period 1
9:30 – 10:30	Period 2
10:30 – 11:00	First Break
11:00 – 11:30	Tutor time, during which there will be: <ul style="list-style-type: none">• registration• equipment and uniform check• rewards• activities planned for that day• You will also have assembly once a week during your registration slot
11:30 – 12:30	Period 3
12:30 – 13:30	Period 4
13:30 – 14:05	Second Break
14:05 – 15:00	Period 5
15:00	Home time



You will see your tutor every day so you will get to know them well. You will have different teachers for your lessons and you will move between classrooms. Don't worry, you will soon get used to it and get to know your timetable.

We will give you a map and a copy of your timetable with classroom numbers and subject details. We will help you find your way around and give you extra support until you are settled in. Everyone here will be happy to help you. **So if you don't know where to go, or you lose anything, just ask!**

What will I study?

ENJOY NEW
SUBJECTS
AND TOPICS

You will study a wide range of subjects in Year 7, including:

- Art
- Computer Science
- Dance
- Design Technology
- Drama
- English
- Geography
- History
- Literacy
- Mathematics
- Modern Foreign Languages (French and Spanish)
- Music
- Personal Development Education (PDE)
- Physical Education
- Religious Education
- Science

And even more fantastic options in Year 9!

Your teachers will be experts in their subjects. They will help you build on what you have learnt in primary school and help you move smoothly into working at a higher level in KS3.

What about homework?

You will be shown how to use 'Show My Homework' when you start school in September. All of your homework will be recorded on there but you should also note your homework in your planner.

It is important to hand it in on time and not leave it to the last minute. No one ever does their best when things are left to the last minute.

It is also important to have a good balance of school work and other activities. So plan your time and schedule your homework around hobbies, clubs, etc.

You can get help with homework at Homework Club or you can work in the School Library.

Progress

We will regularly check how you are progressing in each subject. This means that if you are struggling with anything, your teachers can give you extra help as soon as possible and get you back on track.

TAKE PART IN
ASSESSMENTS



MEET NEW
TEACHERS

LEARN AND
DEVELOP NEW
SKILLS

School expectations

We have a few simple rules which, when followed, help keep our school a safe and supportive place:

- Follow instructions first time
- Engage positively in learning
- Show respect to each other and our surroundings
- Move around the school safely and calmly
- Be in full uniform at all times

Rewards

We believe that rewarding good behaviour is much more effective than concentrating on when you haven't done well.

We look for anything which shows that you are adopting a Believe, Grow, Succeed (BGS) mindset. This includes taking part in School Council, representing the school in a sport, making healthy lifestyle choices or supporting fellow students.

We will issue BGS awards or sunshine cards and contact your parents or carers to let them know how well you are doing. If you collect enough rewards, you will receive a bronze, silver or gold award or even a 'hot chocolate morning' with the school leadership team.

**BECOME A
FORM CAPTAIN**

What if I need help?

We hope that you have seen that we are a very caring school community from the contact you have had with us already. We will always help any student. Everyone has worries and problems at some time or another. If you are going through anything, please speak to an adult at school. You can speak to anyone you feel comfortable talking to but the first person to speak to will be your Form Tutor. You will see them every day and get to know them well.

You will check in with them every day and they are here to look after your welfare.

You will also have a Head of Achievement who leads the Year Group. They are supported by a Learning Mentor who may work one-to-one with you on certain occasions and who is another source of support.

We aim to not just help you when you are having problems, but create a supportive atmosphere where you develop self-confidence and reach your full potential in all areas of your life, not just academically.

Bullying

We do not tolerate bullying, including cyber-bullying, and take it seriously. **If you are being bullied immediately tell an adult.**

BELIEVE

GROW

SUCCEED

What clubs and activities can I do?

We want you to develop as a fully rounded person so, as well as the full curriculum, we offer a fantastic range of clubs and trips. You will be offered 'once in a lifetime' opportunities when you are with us, so don't hold back – have a go at something new.

Our clubs include sports such as badminton, basketball, football for boys and girls, table tennis, netball and boxing.

You can also take part in art, dance, drama, music, coding, cookery, chess, choir, DT club, daily Salah, textiles, Debate Mate, Fit Club, Philosophy Through Film, 'Be Her Lead', Sustainability Group and lots more!



**ATTEND AT LEAST
ONE CLUB A WEEK**

**TRIPS AND
WORKSHOPS**

**COMPETE
AGAINST OTHER
SCHOOLS**

When?

Clubs take place before school, at lunch break and after school.

You can also take part in the Duke of Edinburgh's Award Scheme in KS4, where you will go on various expeditions.

We also run trips and visits to places of interest. In Year 7 you can go to a pantomime, see a Shakespeare play, visit sites of historical interest, go on geography field trips and lots more. You may also join a school sports team and take part in sports fixtures.



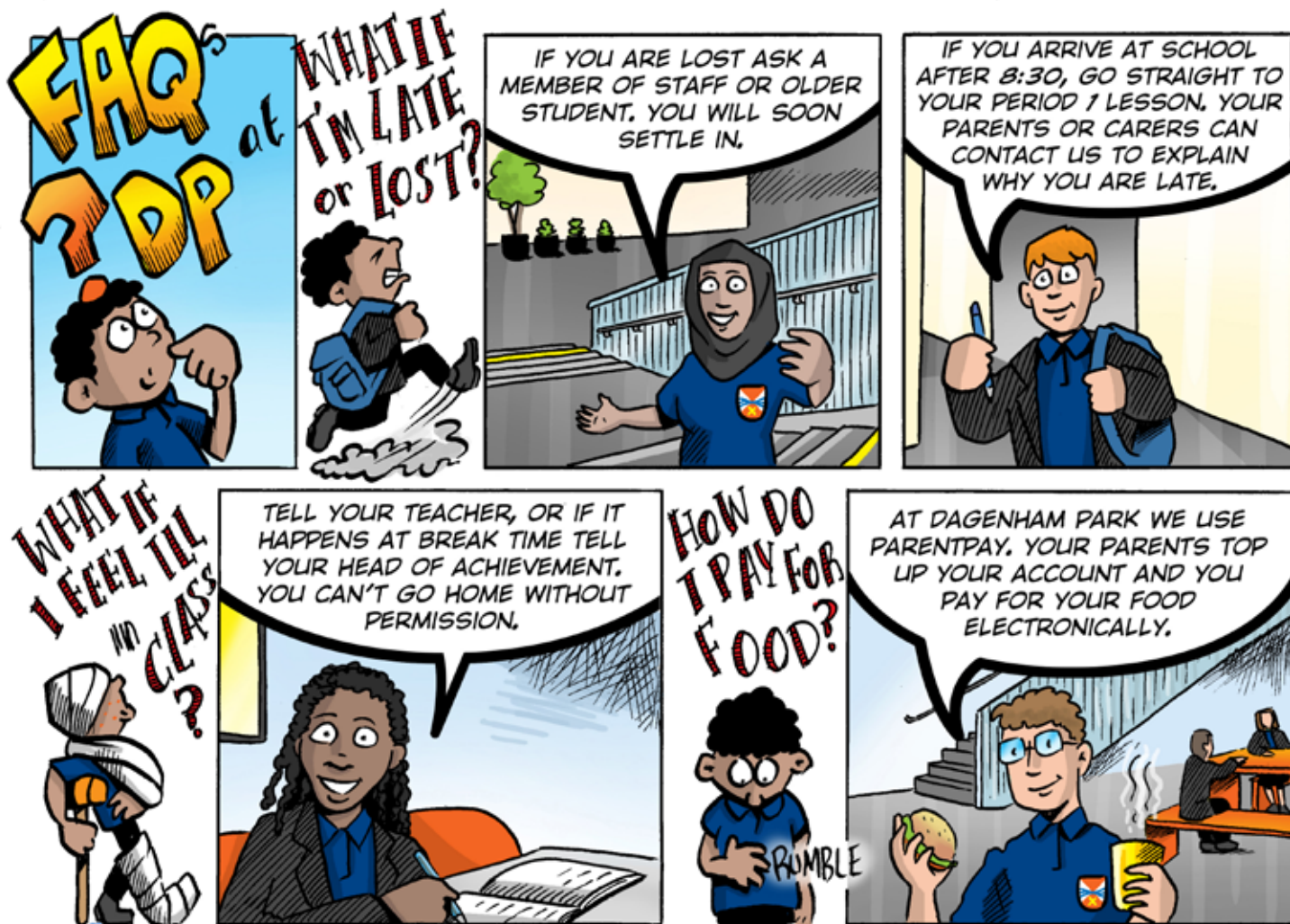
BELIEVE

GROW

SUCCEED

Frequently Asked Questions

We hope we have covered most of the questions you have, but here are answers to questions we are asked each year:



Think about BGS and embrace all the new opportunities you are about to be given!

If you have any more questions, please contact us at:

Dagenham Park Church of England School
School Road, Dagenham, Essex, RM10 9QH

Tel: 020 8270 4400

Fax: 020 8270 4409

Email: office@dagenhampark.org.uk



Devised and produced by Stoneworks Education Ltd www.stoneworkscommunications.co.uk/Education

Copyright © 2014-2022 Stoneworks Education Ltd.

BELIEVE

GROW

SUCCEED