

Transitioning to Lower Senior School



DULWICH COLLEGE
| SINGAPORE |

Welcome to Dulwich College (Singapore) Senior School

Moving from Year 6 to Year 7 is an exciting time for our students. Most of our students will be moving up from Junior School, while some will be joining Dulwich College (Singapore) (DCSG) from another school.

Wherever our students have come from, the move to Senior School is a big step and there will be a lot of questions.

To help set everyone up for a smooth transition, this booklet includes the important information you need to know for the move up to Senior School.

World class education where students come first

We aim to equip our students for success in an ever-changing environment, and we do this by delivering a well-rounded education on a campus which features world-class facilities.

Nurturing confident, thoughtful and outward-looking young people who have a passion for learning

Our teachers are experts in their subjects and will work hard to help students develop curiosity and wonder about the world we live in and their part in it.

Our teachers and staff are also kind and caring, and will nurture our students and help them reach their full potential.

We expect our students to act responsibly. We value kindness and do not tolerate bullying, and we are proud that our students reflect these standards.

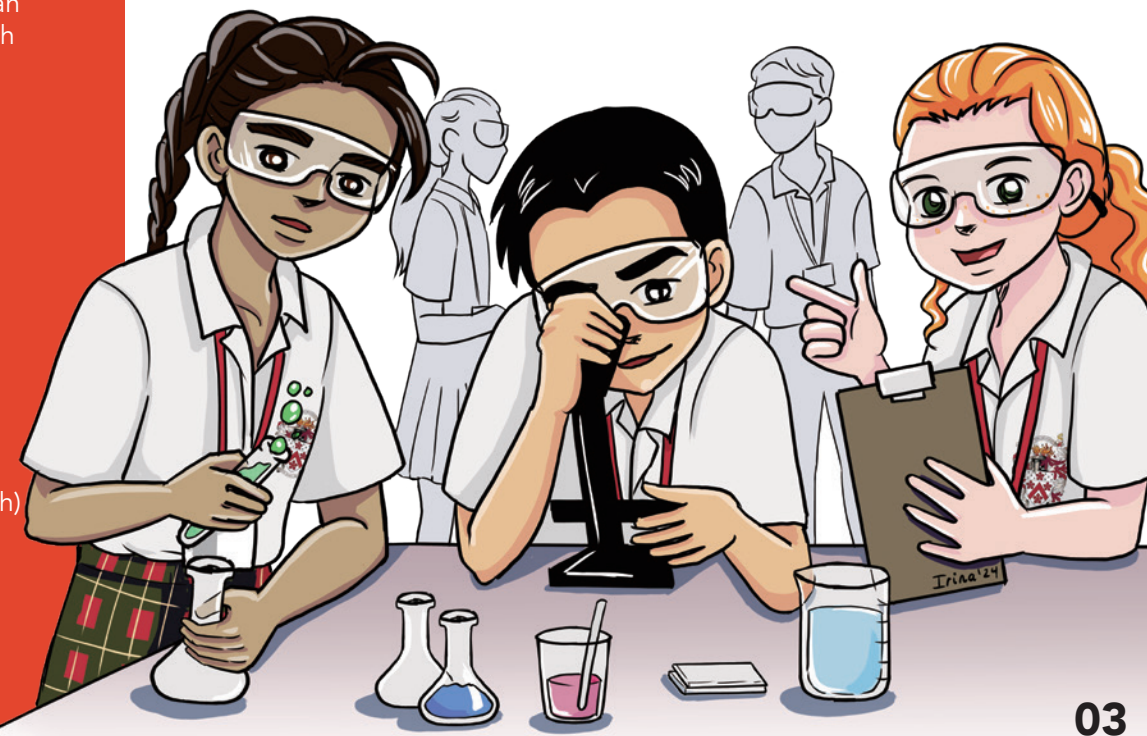


What subjects will they study?

Our students will study some of the same subjects as in Junior School but in more depth, while will also studying some new subjects.

The curriculum, which follows an enhanced version of the English National Curriculum, covers:

- Art
- English
- Dance
- Design and Technology
- Drama
- Geography
- History
- Mandarin
- Mathematics
- Modern Foreign Languages (French, German and Spanish)
- Music
- Physical Education
- Science
- Wellbeing



What about homework?

We want our students to achieve a good balance of self-directed study through homework and allow time for other interests. They will receive one piece of homework per subject (where homework is set) per week. Each homework task should take 20-25 minutes (except for Maths where it will take 45 minutes) and they will have at least two school days to complete it.

What are the facilities like?

Our students will have access to a Performing Arts Centre with three theatres, a swimming pool, sports fields, gymnasium, rooftop gardens, a forest school, sports science lab and lots more!

They will also have access to our new net-zero facility 'The Greenhouse', which has an auditorium, a STEAM (Science, Technology, Engineering, Arts and Maths) workshop, professional teaching kitchen, film and media suites, three additional black box theatres, and computer labs.

There is a dedicated Senior School library which is open from 8.00am to 6.00pm during term time.

Parents are also welcome to use it outside of school hours.



What else will they do in Senior School?

We want our students to develop interests and skills outside of the classroom as well.

We have a brilliant programme of Co-Curricular Activities (CCAs) which is run after school. It includes an extensive range of sports, such as badminton, basketball, cricket, football (soccer), gymnastics, hockey, horse riding, PADI open water diving, polo, rugby and volleyball.

They can also pursue an interest in the arts through creative art, dance, drama and pottery, or deepen their knowledge of STEM subjects in our coding, robotism, maths and physics clubs.

These are just some of the more than 300 CCAs on offer across our three schools. We hope students pick their favourites and feel confident to give something new a try!



CCAs can help our students develop leadership and interpersonal skills, with the added bonus of helping to demonstrate their strengths when the time comes to write their university applications.



But, most importantly, they are great fun!

What about College Houses?

When students join us, they will become a member of a college House, which has its own colour.

Each House is named after an inspirational, world-renowned figure:

Shackleton (green): Sir Ernest Shackleton, intrepid polar explorer and Dulwich alumnus.

Mandela (blue): Nelson Mandela, anti-apartheid campaigner.

Lee (red): Lee Sun Chau, doctor and pioneer for women in the medical field.

Earhart (purple): Amelia Earhart, aviation pioneer.

Houses take part in friendly competitions and students can also earn House points in their lessons.

They also focus on a different UN Sustainable Development Global Goal each academic year, giving students the opportunity to work closely with other staff and students across year groups. This helps students gain leadership experience and make a real impact by running events and projects for their peers.

What uniform and equipment will they need each day?

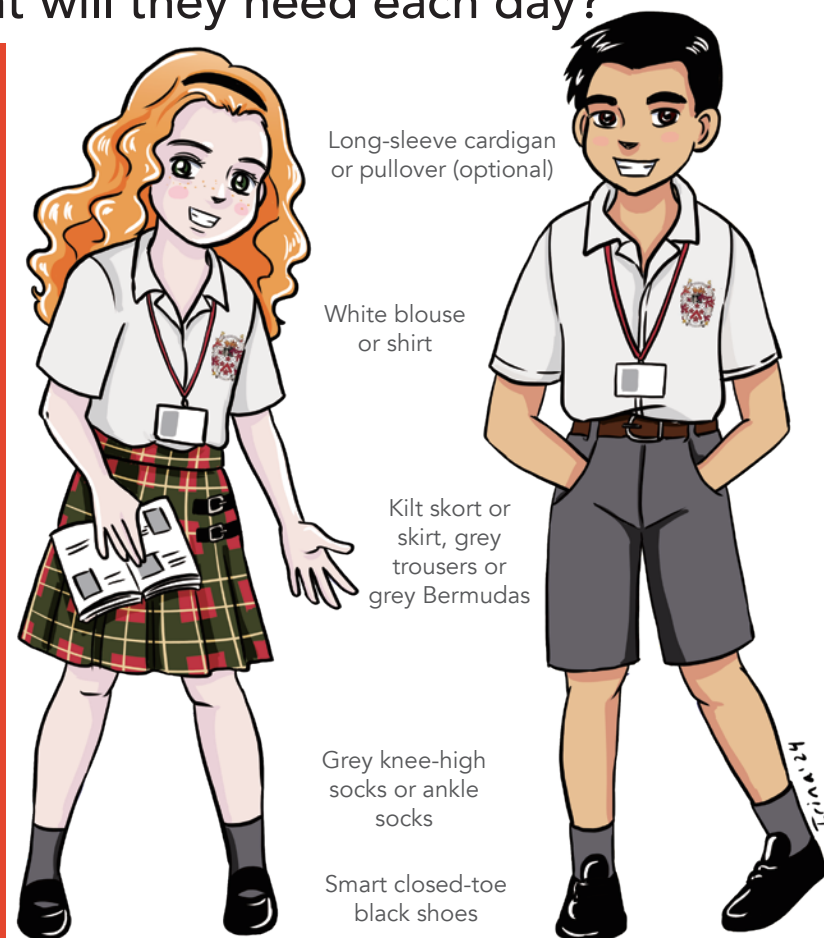
Special uniform

For special occasions (such as assemblies), students will need to be Best Dressed in a blazer and College tie (blue with red stripes). They can be brought to school at the start of each term and stored in tutor rooms. Students will also have a House uniform for special activities, such as sports days or school trips.

Equipment (all labelled with student name and class):

- Pens, pencils and other stationery in a pencil case
- Mathematical geometry set with pencil, ruler, protractor and compass
- Scientific calculator – Casio fx-991ES PLUS is recommended
- Fully charged iPad or laptop
- Headphones or equivalent
- Refillable water bottle

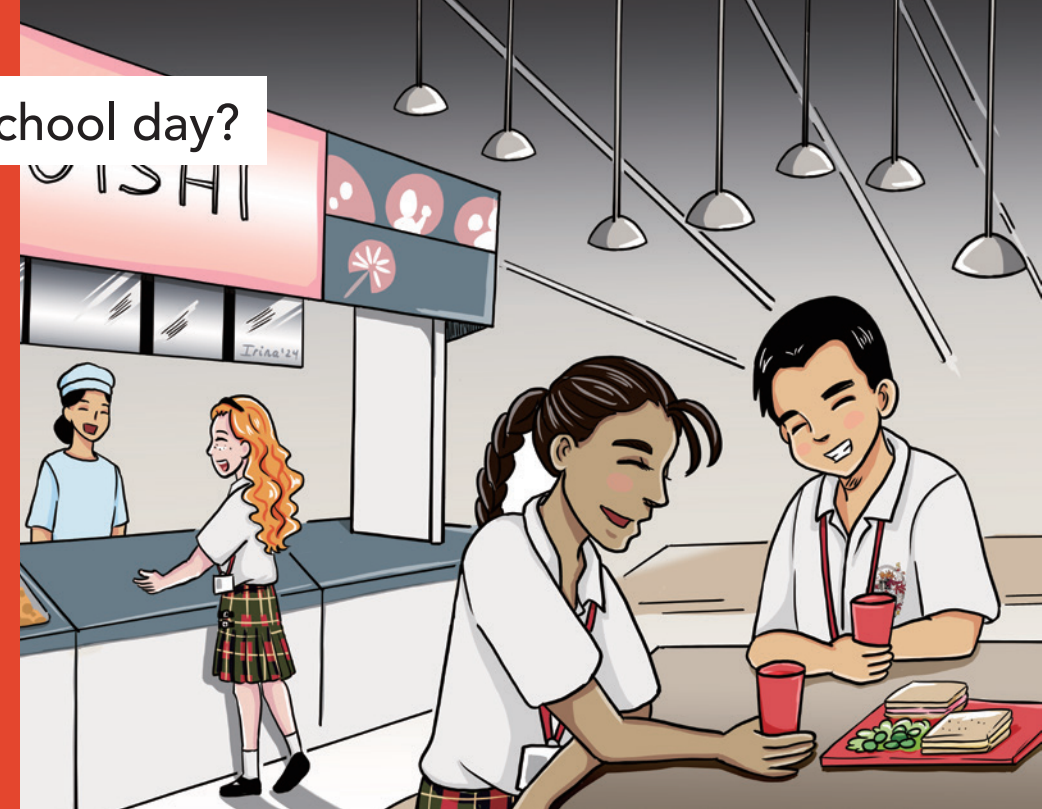
If students own a mobile phone or smart watch, they must keep them switched off and in their bags during school hours.



What happens in a school day?

Each school day will look like this:

- 8.25 Arrive in form room
- 8.30 Registration and tutor time
- 8.40 Period 1
- 9.40 Period 2
- 10.35 Breaktime
- 10.55 Period 3
- 11.55 Period 4
- 12.50 Lunchtime
- 13.40 Period 5
- 14.40 Period 6
- 15.35 End of school day
- 15.45 Early buses depart
- 15.45 CCAs start
- 16.45 CCAs finish. (CCAs which finish after 16.45 will be highlighted at sign up stage).
- 17.00 Late buses depart

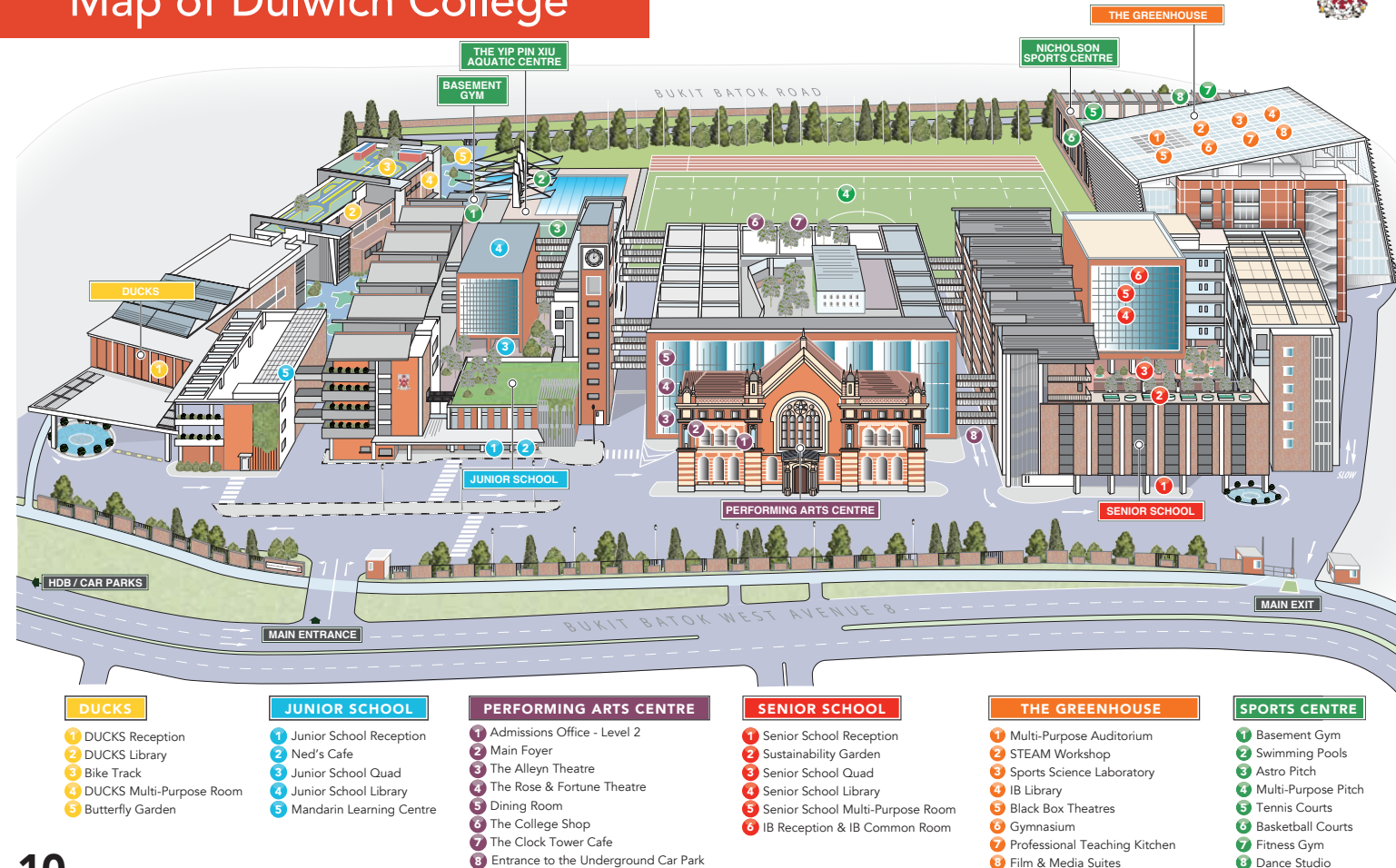


What about food?

We have brilliant catering facilities which provide food from all over the world, and we cater to students with special dietary needs. Students can also bring in lunch from home if they prefer. The dining area is also a great place to hang out and relax with friends at breaktimes.



Map of Dulwich College



What will be expected of students?

We want our students to become people who will make a positive difference in the world.

To help them become the best version of themselves, we all follow the Dulwich Charter of Expectations and expect everyone to reflect our values of **Integrity, Empathy, Respect** and **Responsibility**.

Following these values helps maintain a college environment in which everyone is honest, polite and kind. We are respectful to each other and treat ourselves with respect, taking responsibility for our actions and how we interact with the community and wider world.

What if students need help?

We believe students succeed academically and achieve their goals when they feel safe, supported and happy at Dulwich College (Singapore).

All of our students will be supported by their form tutor and our pastoral team. If at any time further support is needed, all students and their families have access to our Counselling Service.

We all have our own challenges and need to lean on support from time to time, so don't worry about asking for help.

Student Leadership

We want our students to make a contribution to society, and a big part of that is ensuring that all of our students have the opportunity to develop their leadership skills. Our Student Leadership programme is a great way to develop the skills needed to make a positive impact, both while at College and in preparation for when they leave or graduate.



**We look forward to
welcoming you and your
family into our school family!**



DULWICH COLLEGE
| SINGAPORE |

LIVE
WORLDWIDE.™

For more information on any of the topics covered in this booklet, please contact:

71 Bukit Batok West Avenue 8, Singapore, 658966

Tel : +65 6890 1003 Email : admissions.singapore@dulwich.org Website: <https://singapore.dulwich.org>