

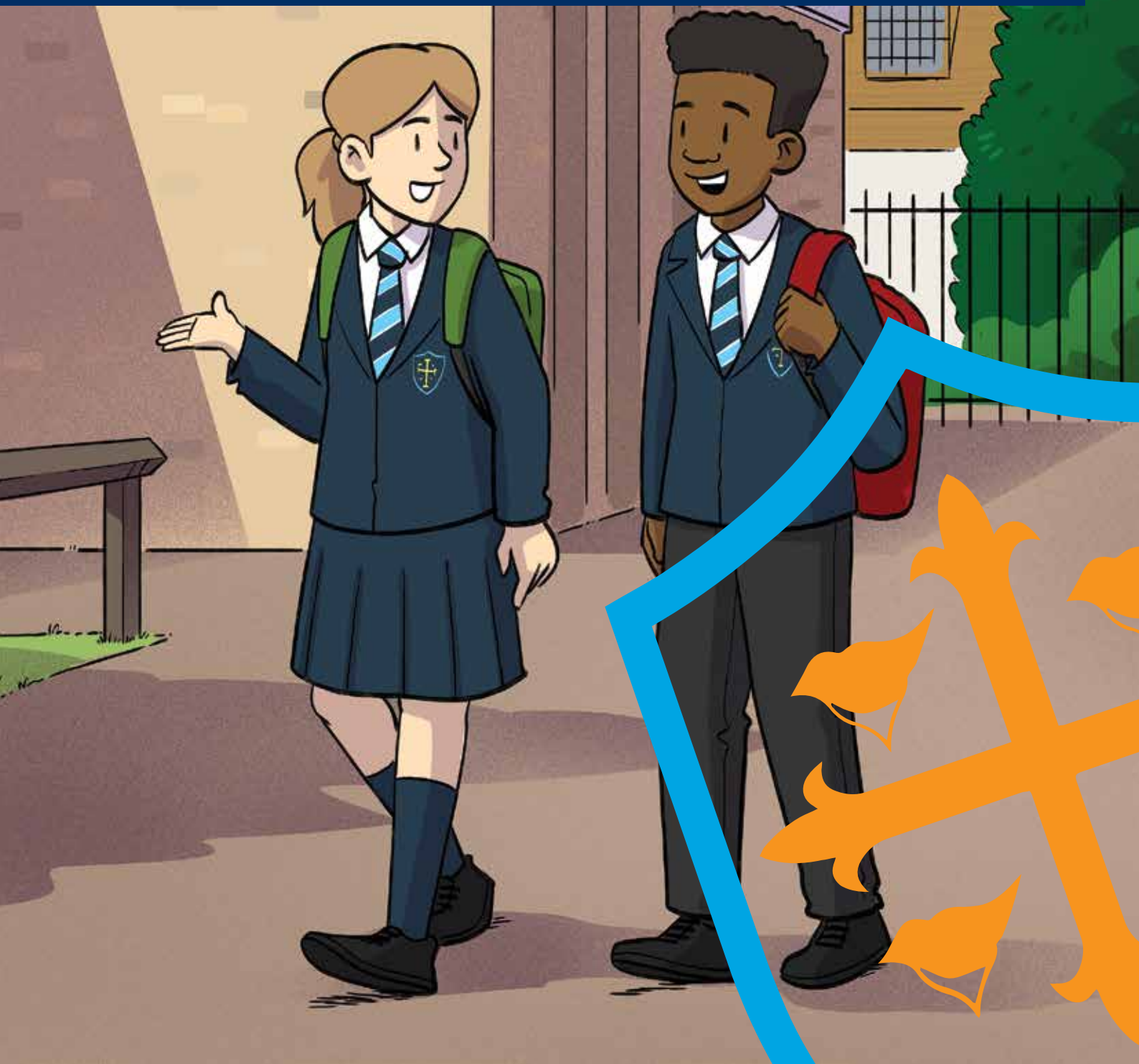
Welcome to St Edward's Academy



ST EDWARD'S
CHURCH of ENGLAND ACADEMY

Life in all its Fullness

This is your guide to joining St Edward's. Inside is all you need to know to feel happy and confident when joining St Edward's Academy.



What do I need FOR MY FIRST DAY?

It is important to come to school in the correct, full school uniform from your first day. You will be given your tie and lanyard on your first day.

- White shirt (with collar)
- Navy-blue blazer with school badge (to be always worn)
- School tie
- Plain navy-blue V-neck jumper/ cardigan (no logo, sweatshirts, or hoodies)
- Navy-blue pleated skirt. No shorter than 2" (5cm) above the knee or lower than the mid-calf/ Navy-blue or black tailored school trousers
- Plain navy, black or white socks
- Plain black low-heeled shoes



- White shirt (with collar)
- Navy-blue blazer with school badge (to be always worn)
- School tie
- Plain navy-blue V-neck jumper (no logo, sweatshirts, or hoodies)
- Dark grey or black school trousers
- Plain dark grey or black socks
- Plain black shoes



If you wear a belt, it should have a plain buckle. Your coat should be plain dark blue or black, without a logo, and not leather, leather-look, or denim. You can wear a black or navy-blue scarf and a pull-on hat in the winter. Your bag should be big enough to hold an A4 textbook, exercise book or folder and should not be a handbag or man bag.

Hair ties should be plain navy or black. Headscarves should be plain navy or black and not patterned.

The only jewellery allowed is a small cross or religious symbol. No make-up, fake eyelashes, fake tan, nail varnish, false nails or visible tattoos are allowed in school.

Your PE kit should include:

- Plain navy-blue shorts
- Light blue polo with school logo
- White socks
- Trainers with white sole
- School tracksuit with school logo

Navy-blue football socks, shin pads, and outdoor football/Astro/moulded boots can also be worn — these are optional for girls.

You will not need your PE kit on your first day.

WHAT TIME DO I START SCHOOL?

You are to arrive at school between 8.10am and 8.25am each day and line up in the playground. You need to ensure that you arrive on time. If you get to school after 8.30am, you will be considered late.

WHAT EQUIPMENT WILL I NEED?

You will need:

- Lanyard
- ID badge
- Student planner
- A reading book
- Casio scientific calculator

You will also need to bring a clear pencil case containing:

- 2 black pens
- 2 pencils
- 2 highlighters
- 1 red pen
- Ruler
- Eraser

You will be given your exam pencil case on the first day with some stationery. You don't need to use this every day if you have your own pencil case, but you will need this for exams.



What is EXPECTED OF ME?

WHILE YOU ARE AT SCHOOL, YOU SHOULD TREAT EVERYONE AND EVERYTHING WITH RESPECT BY:

- Always using your best manners
- Moving calmly and sensibly around the site
- Always wearing the correct full uniform
- Keeping your hands, feet, and any objects to yourself
- Not touching anyone without their consent

Follow classroom rules, including:

- Arriving equipped to learn
- Following the seating plan
- Listening respectfully
- Speaking, not to dominate but to participate
- Making a positive contribution
- Doing your very best in every lesson

OUR SCHOOL VALUES

We live 'Life in all its Fullness' at St Edward's and do this through our HOPE values:

Humanity **Optimism** **Perseverance** **Excellence**

This is how our values apply to the code of conduct that you will be expected to follow in school:

HUMANITY

You will treat everyone and everything with respect. You will be respectful of differences and diversity. You will consistently show thoughtfulness to others. You will always behave safely.

OPTIMISM

You will have a thirst for knowledge and skills and be a valued community member. You will participate fully in lessons and learning opportunities. You will believe that we can all learn and contribute to making the world a better place.

PERSEVERANCE

You will attend school every day on time and be on time for your lessons. You will strive to reach your goals. You will be resilient, independent, and positive in finding ways to overcome any barriers to your success. You will demonstrate a commitment to success.

EXCELLENCE

You will aspire and strive to be excellent in all that you do. You will always do your best and be proud of yourself, school, work, appearance, friends and family. You will be proud of your history and your environment. You will be a role model to other young people.

REWARDS

You will be awarded achievement points for following our school values, working hard, and participating in lessons. When you achieve 35 achievement points, you receive a bronze badge to wear on your blazer. You will be presented with this in assembly by your Head of Learning. Your family will be told about your achievement. When you get 50 points, the Deputy Headteacher will present you with a silver badge in assembly. A letter will be sent home to tell your family about your success. If you achieve 65 achievement points, the Headteacher will present you with a gold badge for your blazer, and you will have a special meeting with her.

We also enjoy fun competitions between the Forms or Year groups. Prizes include treats like crazy science experiments, cooking, or ice creams on the field. As well as being lots of fun, these competitions help us learn how to work together as a team.



How do I FIT IN?

In Year 7, your Form Group and Teaching Group will be the same, but these classes may change depending on your subjects as you get older.

Each Year group has its own colour and is named after a group of well-known people, including trailblazers, scientists, humanitarians, scholars, musicians, explorers and artists.



TRAILBLAZERS:

King, Mandela, Pankhurst

SCHOLARS:

Angelou, Austin, Hemingway

SCIENTISTS:

Daly, Hawking, Turing, Jemison

MUSICIANS:

Bowie, Lennon, Simone, Cooke

HUMANITARIANS:

Gandhi, Tubman, Teresa, Schindler

EXPLORERS AND ARTISTS:

Kahlo, Picasso, Earhart, Henson

Who do I talk to IF I NEED HELP?

When you need help or have any questions or worries, the first person to turn to is your Form Tutor. You will see them every day at registration. You can also speak to your Head of Learning or any member of the Safeguarding Team. There are posters in every room showing who is in the Safeguarding Team.

Wellbeing is an important part of life at St Edward's Academy. Form time will have a weekly focus on wellbeing, and you will also have a PSHE lesson every week.

HOW WILL YOU HELP ME TO BE SAFE ONLINE?

By following our E-safety HOPE values, we can ensure everyone is safe while they are online.

Humanity — We will ensure you can use the internet creatively and safely both in and out of school by offering advice and guidance for E-safety.

Optimism — We will ensure you are tech-savvy and can protect yourselves by asking for and receiving appropriate help, support and advice when needed.

Perseverance — We will empower teachers, school staff, parents or carers, and students with the knowledge needed to keep our community safe online.

Excellence — We live by our HOPE values which are principles that guide our behaviours and the way we interact amongst ourselves and with others, in person and online.

We want you to be able to navigate the internet safely. With the help of national experts, we will provide you and your parents or carers with the knowledge needed to keep safe in a digital world. We will help you understand online dangers and know what to do should an incident arise.



What will the SCHOOL DAY LOOK LIKE?

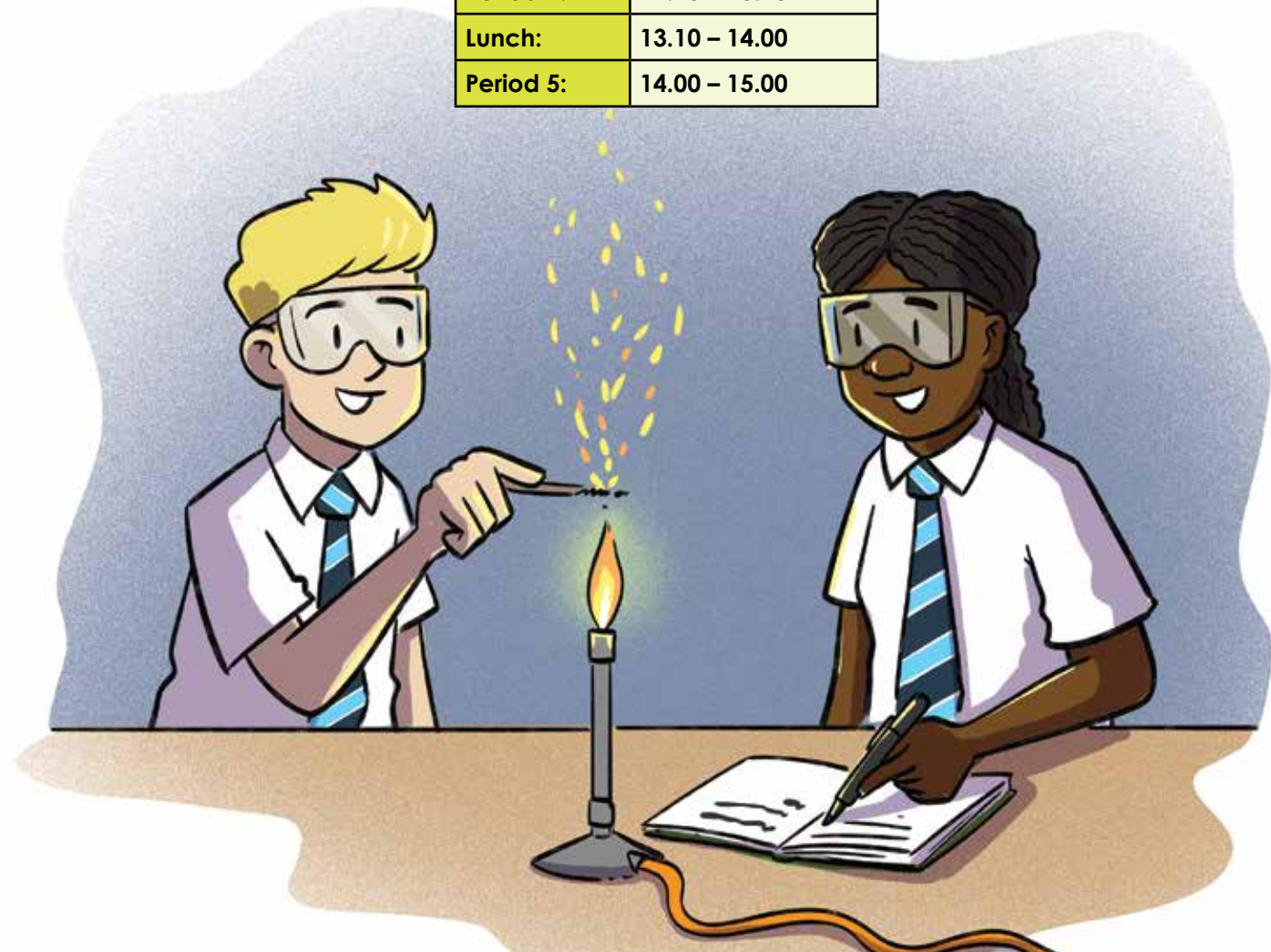
Every day begins with registration. There are 5 one-hour long lessons a day, you will have a 50-minute lunch and school finishes at 3pm.

A timetable for a normal day at St Edward's is:

Form time:	08.30 – 08.50
Period 1:	08.50 – 09.50
Period 2:	09.50 – 10.50
Break:	10.50 - 11.10
Period 3:	11.10 – 12.10
Period 4:	12.10 – 13.10
Lunch:	13.10 – 14.00
Period 5:	14.00 – 15.00

WHAT WILL I STUDY?

English Language and Literature, Mathematics, Biology, Chemistry, Physics, Religious Studies, Geography, History, Mandarin, Spanish, French, Music, Art, Design Technology, IT, Drama and PE.



WHAT ARE THE FACILITIES LIKE?

We have fantastic facilities at St Edward's. These include:

- Art Rooms
- Dining Hall
- Gym
- Sixth Form Block

- Chapel
- Drama Studios
- Library
- Sports fields

- Classrooms
- DT Block
- Multi-faith Prayer Space
- Sports Hall

- Computer Rooms
- Food Technology Rooms
- Science Labs
- Webster Hall with a stage

What clubs and activities CAN I DO AT ST EDWARD'S?

We have a wide range of exciting extra-curricular clubs that give you the chance to follow your own interests or try something new. They are also a fantastic opportunity to make new friends who share similar interests.

Lunchtime activities include:

- Drama club
- Maths club
- Garage Band
- Art club
- Music
- Keyboard club
- Performing Arts club
- Instrumental Ensemble Room
- Music Practice
- Guitar and Ukulele club
- Music Theory
- Computing club
- Karaoke club

We hold annual musical theatre productions that give students the chance to gain experience in set design and technical lighting, playing in the orchestra, taking a leading role, or directing the performance.

Sporting activities take place after school, such as:

- Football
- Handball
- Trampolining
- Basketball
- Netball
- Athletics
- Table tennis

We have strong links with West Ham United Academy, providing opportunities for aspiring footballers. Some of our past students are now professional footballers. For others, sport is a way to bond with others or a chance to switch off at the end of a busy day.

Before school starts, you can visit the library and the Homework and Games Club room is open every lunchtime.

WHAT SCHOOL TRIPS CAN I GO ON?

We run lots of trips for all Year groups to give you the chance to gain new experiences and learn more about the wider world. These include:

- The Natural History Museum
- CSI Crime Days
- Planetarium visits
- Careers trips
- Model United Nations
- Theatre trips
- Wembley tours
- and many more.

We also run an exciting summer school where you can try activities including rock climbing, Gamelan music, pottery making and archery.



Will I have HOMEWORK TO DO?

Homework will be set in every subject once a week. In Year 7, you should spend between 30 minutes to 45 minutes on each subject. You will be given a planner where you can write down every piece of homework you have been given and plan which order you will do them.

Details of your homework are set online via the Satchel One (Show My Homework platform). Your parents or carers will also have log-in details for this to check you have completed all your work.

If you need extra help with your homework or it is difficult to find the time to complete it, you can go to Homework Club, which takes place every day at lunchtime and after school.



FAQS

It is normal to have lots of questions and worries before starting secondary school. Here are the answers to some of the most common questions.

HOW MUCH HOMEWORK WILL I GET?

For each subject, you will get 30 minutes of homework a week. Details of this will be put on Show My Homework, and you will need to write it down in the lesson in your planner.

WHAT IF I GET LOST?

Don't worry, just ask a member of staff or another student to help you. You will learn where everything is very quickly.

WHAT HAPPENS IF I NEED THE TOILET?

You should only use the toilet at break and lunch times and not during lessons. Some students have a toilet pass if they have a medical reason to use the toilet, and they can just show this to the teacher. It may take you a little while to get used to this routine, so don't worry. Your teachers understand it takes time.

WHAT HAPPENS AT BREAK AND LUNCH TIMES?

During break time and lunch, you can go outside and play basketball or football in the playground or go to the library or attend a club. You can buy food from the Dining Hall at both break and lunch times using money put onto your ParentPay account.

WHAT HAPPENS IF I AM ILL OR HAVE A MEDICAL APPOINTMENT?

If you need to leave during the school day for a medical appointment, you should bring in a letter from home with the details and give it to reception. If you're feeling too unwell to come to school, your parent or carer needs to ring into school to let us know. If you're feeling unwell during the day, you can ask to go to the medical room where our school first aider will help you feel better or call home if you need to leave school. Don't worry, we will look after you!

HOW WILL I MAKE FRIENDS?

Your first few days of school will all be about making friends, and we will provide you with lots of opportunities to do this. If you haven't made any friends or find it difficult, we will help you. Just let your Form Tutor or Head of Learning know, and they will buddy you with another student to help you make friends.

WILL I GET LOTS OF DETENTIONS?

No! We give out lots of praise to students who are doing the right things. These can include handing in their homework on time, completing classwork to the best of their ability and showing our school values of HOPE. When you get praise, we will give you achievement points which you can collect to earn your reward badges. Unfortunately, there are consequences if you aren't following our expectations. You may get a warning or detention to learn how to get it right next time.

I HAVE A FOOD ALLERGY, WHAT HAPPENS ABOUT LUNCH?

All items on our lunch menu have food allergy details. Your parents or carers can contact our catering provider (Vertas) for a full menu breakdown. Your parents or carers will give us all the details so they will appear on the cashpoint as you buy your food.

WHAT HAPPENS IF I AM BULLIED?

Thankfully, this is rarely an issue at St Edward's. When we know that bullying is happening, we will intervene quickly.

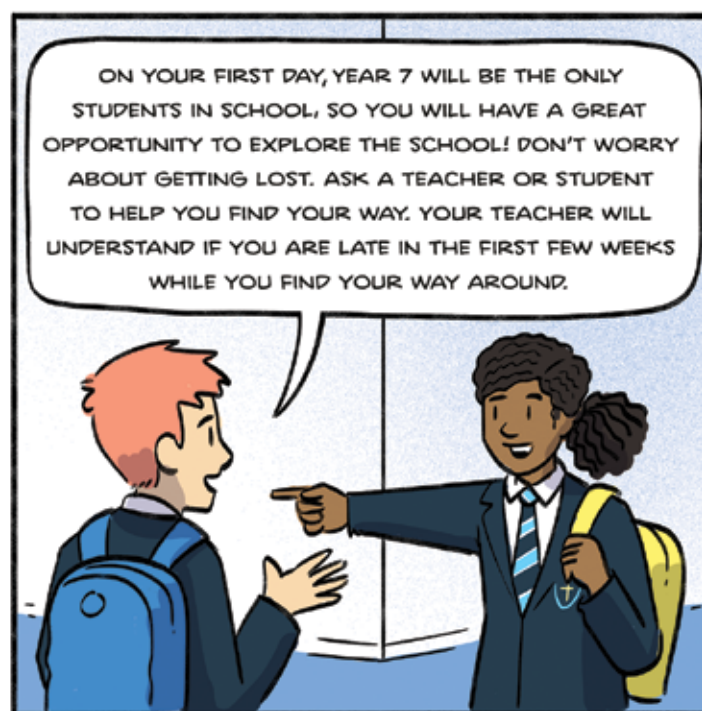
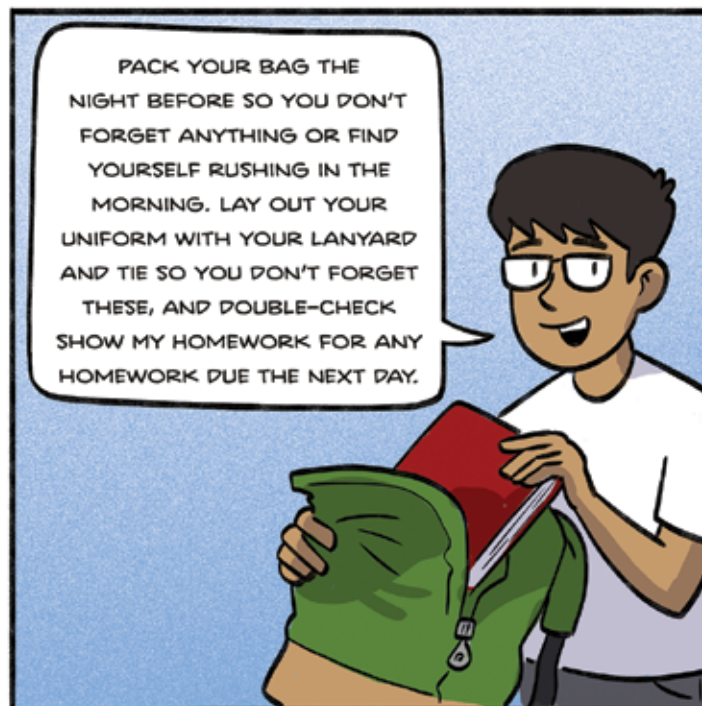
HOW MANY STUDENTS ARE ATTENDING FROM MY PRIMARY SCHOOL?

Unfortunately, we cannot give specific numbers of students attending from each of our feeder schools. Your primary school will tell us about your friendship groups so that you can be in teaching groups with your friends.

HOW MANY STUDENTS WILL BE IN MY CLASS?

This will often depend on the subject being taught and the Year group. In Year 7, there will be approximately 30 students in each form group.





Tips from YEAR 7 STUDENTS

"On the first day of Year 7, I walked through the gate, and some teachers were there with the most comforting smile. My advice for you is to brush off your nervousness and reveal your intelligent and smart self."

Karen

"I have had an amazing journey so far at St Edward's. You are now part of their loving family and community. So, my advice to all the Year 6s is that don't be afraid, just enjoy the beginning of a lifelong journey at St Edward's since it's an amazing place to be."

Rebekah

"When it was my first day, I was terrified! I didn't know who to talk to or how to make friends. But... then came over a lovely group of older students that came to comfort me and make me feel welcomed."

Grace

"If you are scared of going to a bigger school, don't worry because all the other years are very kind and there's some teachers that are part of the safeguarding team. The safeguarding team helps with anything you're nervous or uncomfortable about."

Oliver

"Make sure you look smart and organised, don't be scared of older students. At St Edward's, they help you when you need it."

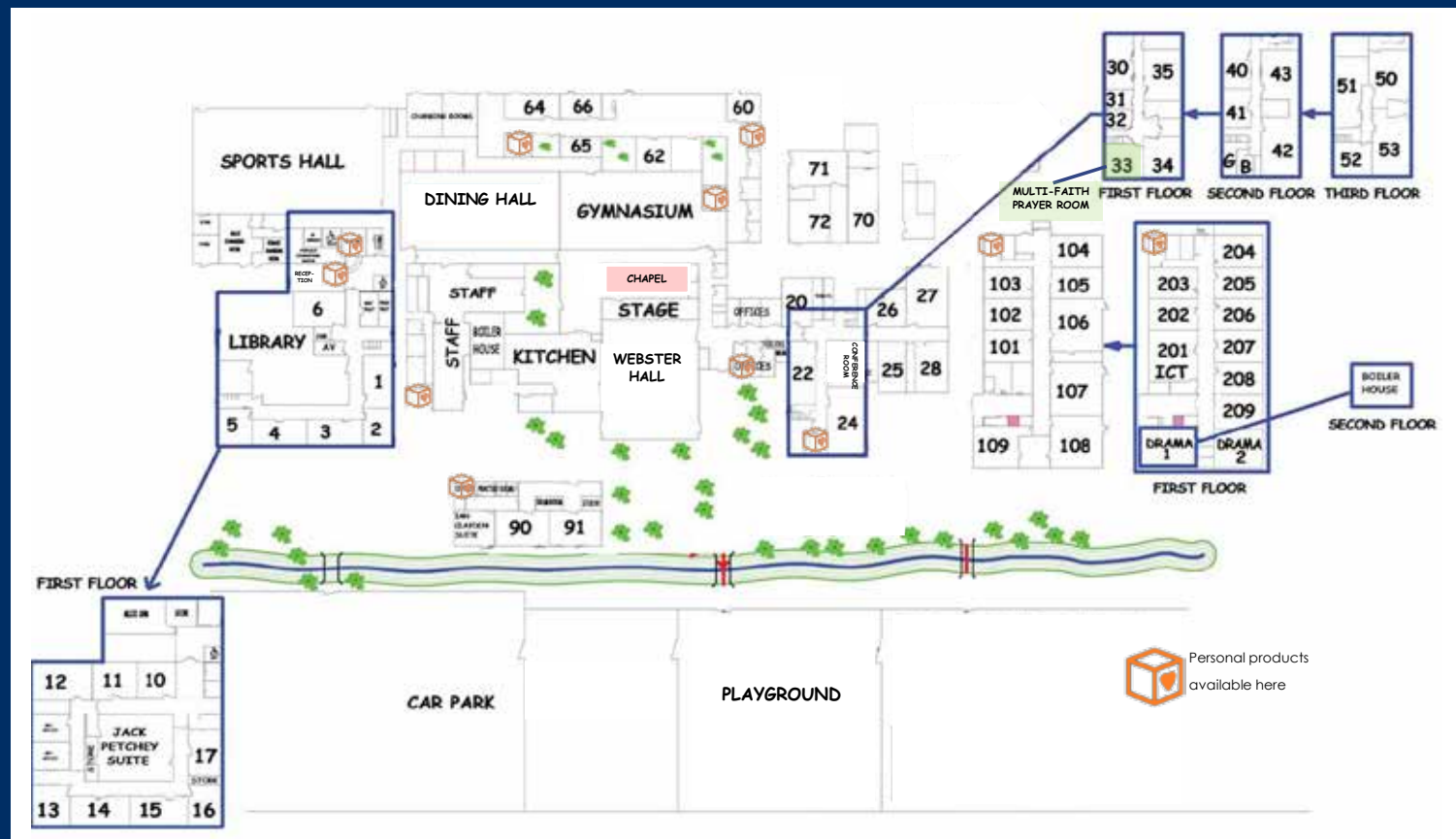
Abdul

"Year 7 may seem like a big scary change, but at St Edward's, it's the opposite. St Edward's has so many amazing clubs both during school and after, which can help you get to know others in your Year."

Nathania



Here is a map to St Edward's so you can check where key places are before you visit us.



**If you have any further questions, please check our website or email us.
We look forward to seeing you soon!**

'Life in all its Fullness'



ST EDWARD'S
CHURCH *of* ENGLAND ACADEMY

St Edward's Academy

London Road, Romford, Essex, RM7 9NX

Office Tel: 01708 730462 **Email:** info@steds.org.uk **Website:** www.steds.org.uk

Devised and produced by Stoneworks Education Ltd www.stoneworkscommunications.co.uk/Education

Copyright © 2014-2022 Stoneworks Education Ltd.