

A cartoon illustration of Kingsway Park High School. The school is a two-story building with a grey section on the left and a red section on the right. The name 'Kingsway Park High School' is written in white on the red section. Two students, a girl and a boy, are standing in front of the school, waving. They are wearing blue blazers, white shirts, and striped ties. The girl has dark hair and is holding a pink book. The boy has dark hair and is holding a red book. A green fence is in the foreground on the left.

Kingsway Park High School

Welcome to
Kingsway Park High School

The logo for Kingsway Park High School, featuring a blue crown above the text 'Kingsway Park' and 'HIGH SCHOOL' below it, all enclosed in a white circle.

Kingsway Park
HIGH SCHOOL

How will I fit in at Kingsway Park High School?

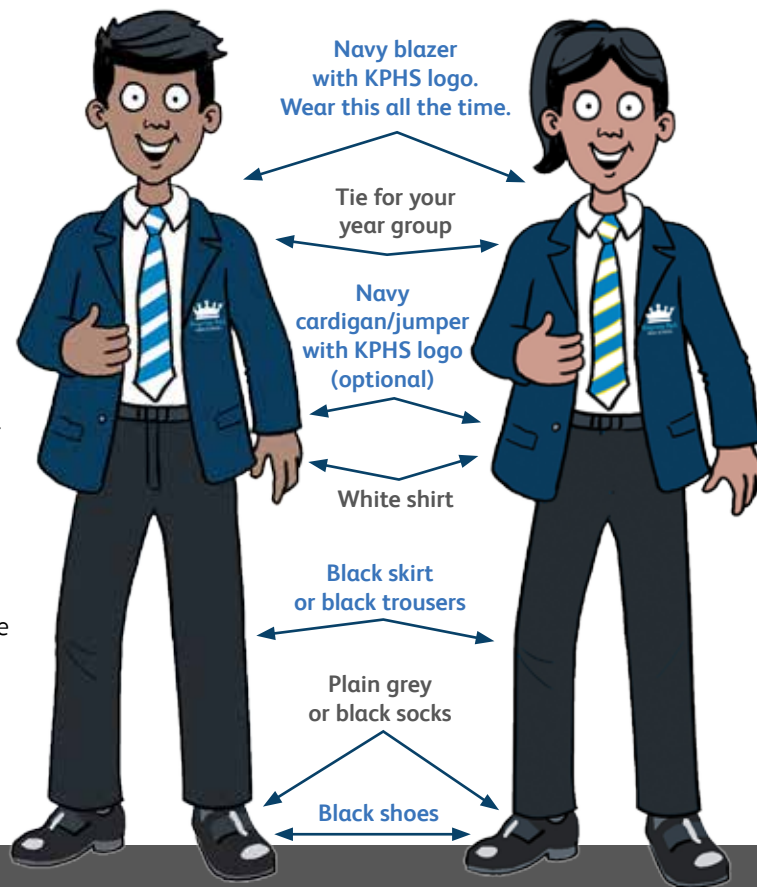
Welcome to Year 7 at Kingsway Park High School and the start of an exciting adventure for you!

We are all very welcoming and friendly here and we have some simple school values which make our school such a wonderful place:

- **Kindness** Treat others the way you would like to be treated.
- **Perseverance** Keep going when things get tough. You only improve by making mistakes.
- **Helpfulness** Help your friends, classmates, school and community.
- **Success** We celebrate everyone's successes.

Kingsway Park High School will probably be much bigger than your primary school. You will be looked after by several teachers.

You will be in a tutor group which will be like your school family. Your tutor will make sure you are ready for the day by checking that you have brought your equipment and planner and you are wearing the correct uniform. They will also check on how you are getting on and they will always be ready to listen if you have any problems.



What will I need for my first day?

You will need to wear the correct uniform from your first day and your tutor will check it during tutor time.

You will also need to bring the following equipment in your school bag every day:

- **Clear pencil case, containing:**
 - Black and green pens
 - Pencil
 - Ruler
 - Eraser
 - Colouring pencils
 - Highlighter pens are optional
- Scientific calculator
- Reading book
- Timetable
- Diary
- PE kit on the days you have PE
- Ukulele for music lessons



Student Quote:

My tutor made me feel welcome and I absolutely love my tutor group.

Student Quote:

I felt nervous before coming to school... I am no longer nervous and feeling more confident. I have been talking to people, which has helped.

What happens in a school day?



You can come into school from 8.20am and need to be in your tutor room by 8.30am.

This is what the day normally looks like:

8.20 – 8.25am	Arrival
8.30 – 8.50am	Tutor time
8.50 – 9.50am	Lesson 1
9.50 – 10.50am	Lesson 2
10.50 – 11.10am	Break
11.10am – 12.10pm	Lesson 3
12.10 – 12.40pm	Lunch
12.40 – 1.40pm	Lesson 4
1.40 – 2.40pm	Lesson 5

You will move between classrooms for your classes. We will give you a map to show where everything is. If you get lost, ask anyone and they will be happy to help. You will soon know your way round really well and feel at home.

Each classroom lesson will follow 'The Kingsway Method':

- Your teacher will meet you at the door.
- You will sit in the teacher's seating plan.
- Each lesson starts with a recap of what you have learnt already.
- Your teacher will give you an 'enquiry' question to investigate during the lesson.
- Your teacher will always link your learning to life after school and future careers and studies.
- The main part of your lesson will involve lots of great interactive ways of learning, such as mini whiteboards, discussions with your classmates, quick quizzes, independent work, practical activities and lots more!

Your teacher will encourage you to ask questions if you don't understand as this really helps you get to grips with what you are learning.

What will I study in Year 7?

- English
- Maths
- Science
- French/Spanish
- Computing
- Geography
- History
- Social Studies
- VISION (with tutors)
- PE
- Art
- Drama
- Music
- Technology
- Food

Student Quote:

In Year 7 we learn the ukulele. I have been awarded a ukulele badge.

If you are part of Kingsway Avenue, you will have your own classroom and your own teacher for 60% of your timetable. You will go to specialist classrooms with specialist teachers for 40% of your timetable.

What about homework?

You will be set homework for each subject regularly.

Remember to record your homework in your planner and make sure it is completed on time. Lots of students stay after school or go to the library at lunch to complete homework, which leaves the rest of the evening free for hobbies or socialising.



What is expected of me?

Our school is a welcoming, kind and supportive environment, and we want you to feel confident and reach your full potential. So we have some clear rules about behaviour which are in our 'Behaviour for Learning Policy'. Make sure that you and your parents/carers read it through before you join us.

We will record any example of kindness, perseverance, helpfulness and success (and where you haven't behaved well) on the 'ClassCharts' app. You and your parents/carers can access the app to see how you are getting on.

What happens when I have done well?

Achievement Points

When you have done well, you will receive reward points called 'achievement points' on ClassCharts. Achievement points can be spent in the school shop on items such as stationery, books, gadgets, vouchers and money off school trips.

Bee Postcards

Many of you know that a key symbol of Manchester is the worker bee, which symbolises all the hard-working people in the past, who worked together to achieve great things for Manchester.



Student Quote:

I have got the perseverance badge for working so well in my lessons.

So when you have done well in lessons, shown good behaviour on the corridors or at social times, staff will send a 'Bee postcard' to your home. The students who receive the most Bee postcards per term will get even more rewards, such as lapel badges.

Exceptional Work

We also want to celebrate the exceptional work you will produce in lessons. Each week staff nominate students who have completed excellent work. Your work will go on the website and Twitter to show how great it is. You may also be nominated each half term to win Subject Awards in assembly. If you do really well in a range of different subjects, you will attend special events with other students in your year group to celebrate your achievements!

Student Quote:

In assembly, I was awarded 'student of the term' and got an Amazon gift card and certificate. My mum was so proud!

What can I do when I need help?

We know everyone has worries and problems from time to time. Moving to a new school can bring more worries than usual. We want you to feel happy and secure and we know that talking to someone always helps.

You can speak to any teacher at the school if you want to talk but the best people to speak to are:

- Your tutor. You will see them every day during tutor time
- Head of Year 7

If you are new to the UK and/or don't speak English as your first language, we have a special team who will look after you and help you settle quickly and confidently.

What extra support will you give me if I need help with my studies or coping in the classroom?

If you need extra help, you might study in our brilliant 'Kingsway Avenue' area. There are fewer students in each class so you will get lots of one-to-one support from your teachers. It is also a calm space where you can do activities such as board games at break or even just sit and read.

We also give extra support for you and your family through our 'Nurture' provision. We have specialist advisors who can help directly and access help from outside organisations.



What facilities are there at Kingsway?

We have:

- **Brilliant fully equipped classrooms**
- **Drama and dance studios**
- **Sports Hall, including badminton courts**
- **3G sports pitch**
- **Running track**
- **Changing rooms**
- **Lots of green space and a field**
- **Library**
- **Construction workshop**
- **Science labs**
- **Specialist art, music, technology, food and computing classrooms**

And things are getting even better as we are starting construction on a brand new building in September 2022.



What about food?

We are very proud of our fantastic restaurant which is used by students, teachers and school staff. It is open at break and lunchtime.

You don't need to bring cash for your food as we use a cashless catering system. Your parents/carers pay into a ParentPay account online and you use your fingerprint at the till to charge the account.

You can choose from pasta, sandwiches, jacket potatoes, salad, hot meals and fruit. There is always lots of choice and it is great value.

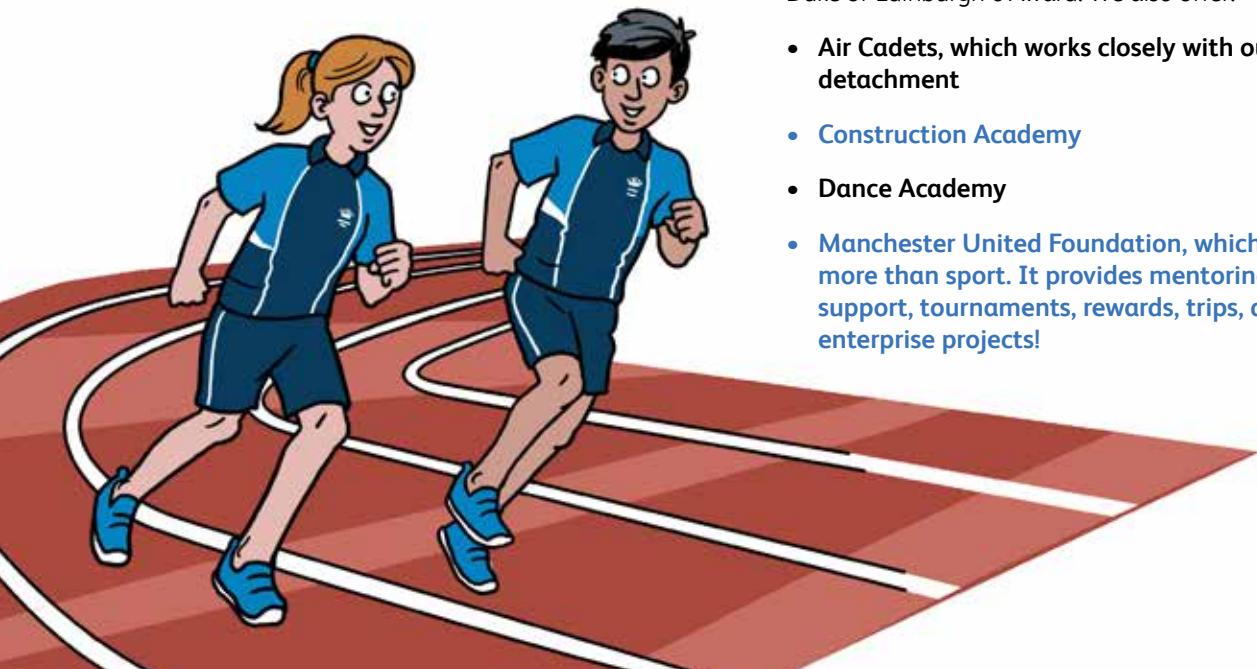
Key Stage 3 and Key Stage 4 have separate lunchtimes. Usually Year 7 students will be able to access the restaurant before everyone else.

If you are in Kingsway Avenue, you will also get your own allocated time in the restaurant.



What extra-curricular activities can I take part in?

At Kingsway Park High School, we have a brilliant range of clubs and activities for you to take part in.



Clubs take place before school, at lunchtimes and after school.

We have a range of clubs which support your academic studies, sports clubs, clubs for interests such as music and drama, and the Duke of Edinburgh's Award. We also offer:

- **Air Cadets, which works closely with our local Air Cadet detachment**
- **Construction Academy**
- **Dance Academy**
- **Manchester United Foundation, which is about so much more than sport. It provides mentoring, extra-curriculum support, tournaments, rewards, trips, and business and enterprise projects!**

You can also go on trips and take part in charity fundraising activities.

There is a wide range of opportunities for you to get involved in – something for everyone!

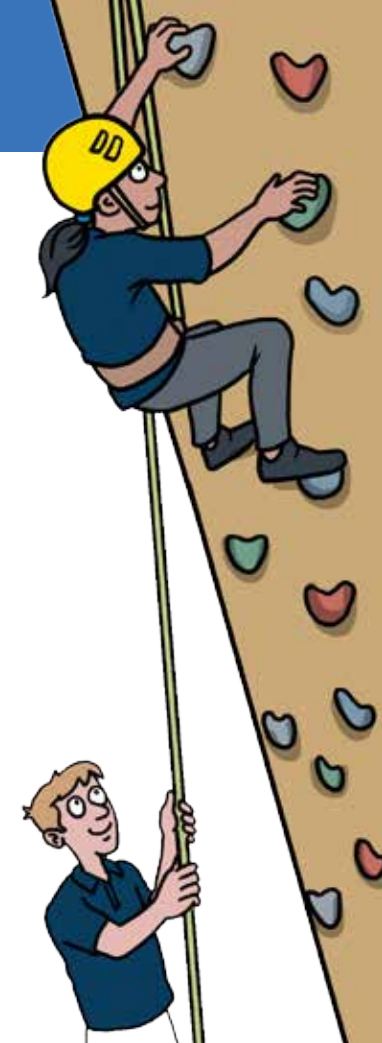
We really recommend that you have a go at several clubs. Why not join a club for something you love already or try something brand new?

Extra-curricular activities are a great way of making new friends and finding a new interest.

Activities such as the Duke of Edinburgh's Award, which is available when you are older, are a brilliant way to find out more about yourself and push yourself to achieve more than you think possible!

Student Quote:

I have had different friends in Year 7, but now I have found my true friends!



The opportunities are endless at Kingsway Park High School!




Kingsway Park
HIGH SCHOOL

Kingsway Park High School,
Turf Hill Road, Rochdale, OL16 4XA
Tel: 01706 716 761
Email: info@kingswaypark.org
Website: kingswaypark.org

Devised and produced by Stoneworks Education Ltd www.stoneworkscommunications.co.uk/Education