



THE MISBOURNE

Welcome to #TeamMisbourne



How should I get ready for my first day at The Misbourne?

We expect high standards of all our students and staff at The Misbourne. Looking smart and ready to learn is very important and we expect you to be well presented and wear the correct uniform from your first day.

You will also need to bring the following items in a sturdy school bag (packed the night before):

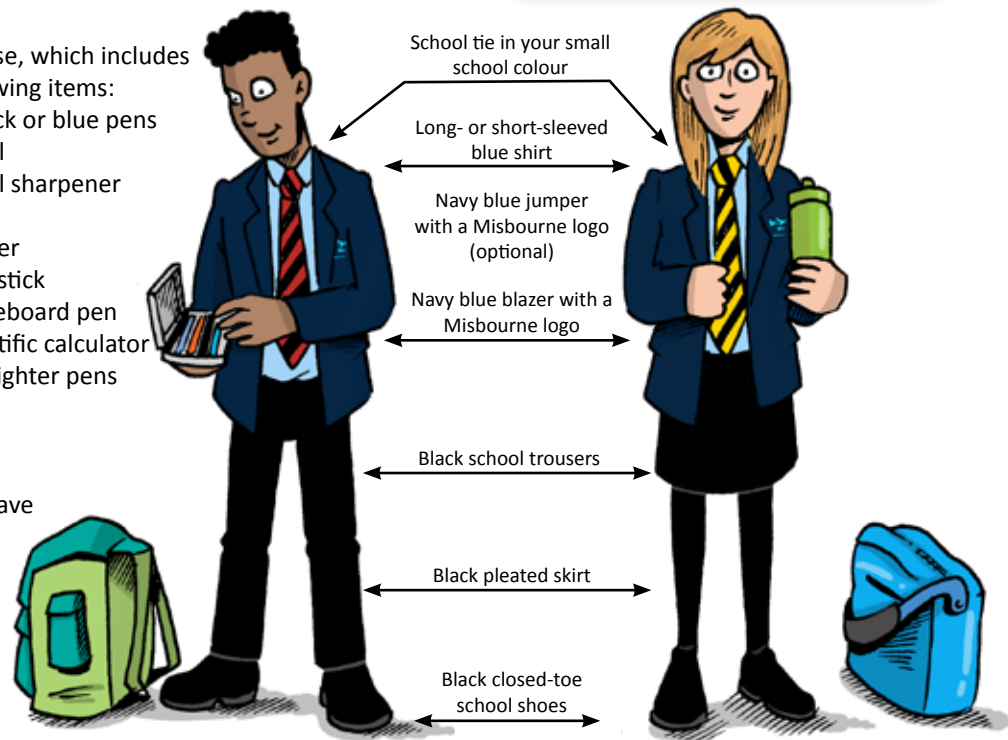
- Reading book
- Water bottle
- Hand sanitiser
- A dictionary and maths set are desirable but not essential.

- Pencil case, which includes the following items:

- 2 black or blue pens
- Pencil
- Pencil sharpener
- Ruler
- Rubber
- Glue stick
- Whiteboard pen
- Scientific calculator
- Highlighter pens

Before your first day, make sure you know the route to school and the timings for public transport or the school bus. Make sure you have checked the equipment list and have everything you need.

Have a good night's sleep and a healthy breakfast in the morning so you start the day full of energy!



"The way teachers handle things here is so impressive, and they always make sure everyone ends up happy."

Chloe, Year 7.

How will you help me settle in when I start in September?

We know that there is a lot to take in when you start secondary school. You may feel excited and perhaps worried about the transition, so we do everything we can to help you settle in quickly and confidently.

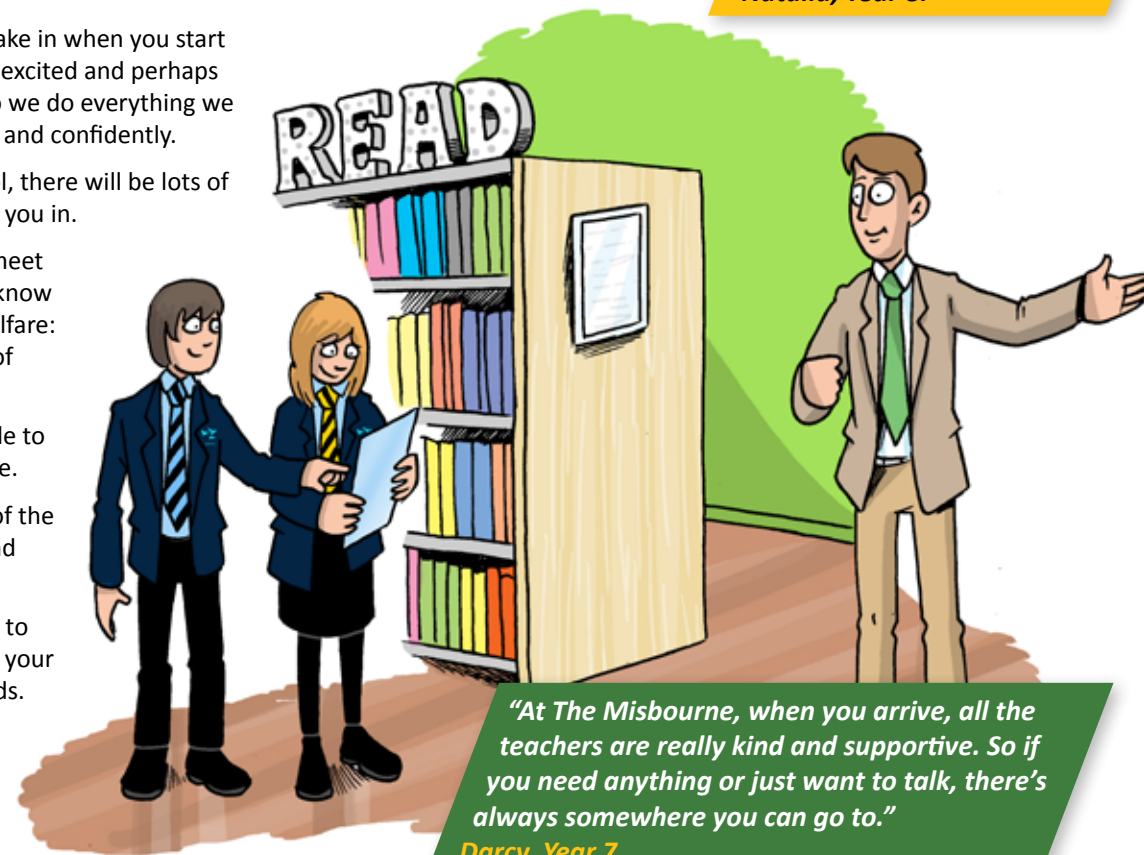
When you first come into school, there will be lots of school staff waiting to welcome you in.

On your first day, you will also meet all the teachers that will get to know you best and look after your welfare: your Form Tutor, Deputy Head of School and Head of School.

Someone will always be available to talk to if you need help or advice.

We will give you a guided tour of the school and a map so you can find your bearings.

There'll be lots of opportunities to get to know your classmates on your first day and to make new friends.



"Don't be scared or worried. You get settled in quickly."

Natalia, Year 8.

"At The Misbourne, when you arrive, all the teachers are really kind and supportive. So if you need anything or just want to talk, there's always somewhere you can go to."

Darcy, Year 7.

What happens on my first day at The Misbourne?

You can arrive on site from 8.15am and there will be a designated area to wait in. You can arrange to meet your friends there.

When the day starts, you will meet your form tutor.

They will give you your timetable and map.

After the tour of the school, they will give you information about how the school works, including our four-school system.

We have four small schools, with students from each year group. You will be in one of the following schools, each with its own colour:

Attenborough (red)

Franklin (green)

Holmes (blue)

Turing (yellow)

Our schools will help you form friendships and connections with students in other forms and years and help strengthen our community atmosphere.

Each school has its own tie in its school colours. Throughout the year there are friendly inter-school quizzes, sporting events and competitions.

Your tutor will tell you about our expectations and our rewards system (more on this later).



"Don't worry about school. I did last year when I was in your position, but now I love it here, all the teachers are really nice, the food in the café is really tasty and if you need to talk to someone, there is always someone to talk to and help you. Just relax and have fun."

Millie, Year 7.



We will show you the café and give you information on our special way of paying via your fingerprint. The food is fantastic and there is lots of space for you to meet your friends and socialise.

What if I need help?

We know you will only be able to do your best at school if you feel happy and secure. All of our teachers and other members of staff will be looking after your welfare and can help if you need help or just want to talk to someone.

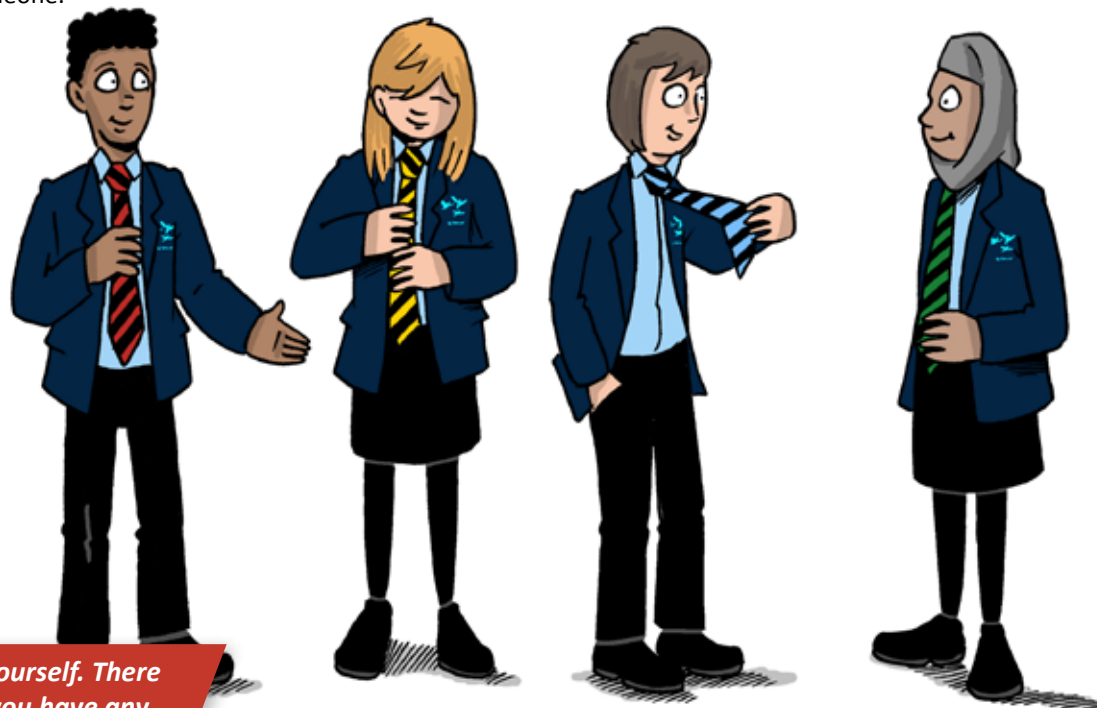
The best person to speak to will be your Form Teacher. You will see them every day and they will get to know you well.

You can also speak to your Head of School or Deputy Head of School.

We also have a school counsellor, a fantastic SEND department and medical room with a student welfare officer.

We can even provide help and support for your family.

"No one will judge you, so be yourself. There is always someone to talk to if you have any troubles. Don't bottle it up." **Katie, Year 7.**



"Whenever you need something, there is always somebody to help."
Ted, Year 7.

What is expected of me?

The Misbourne Way

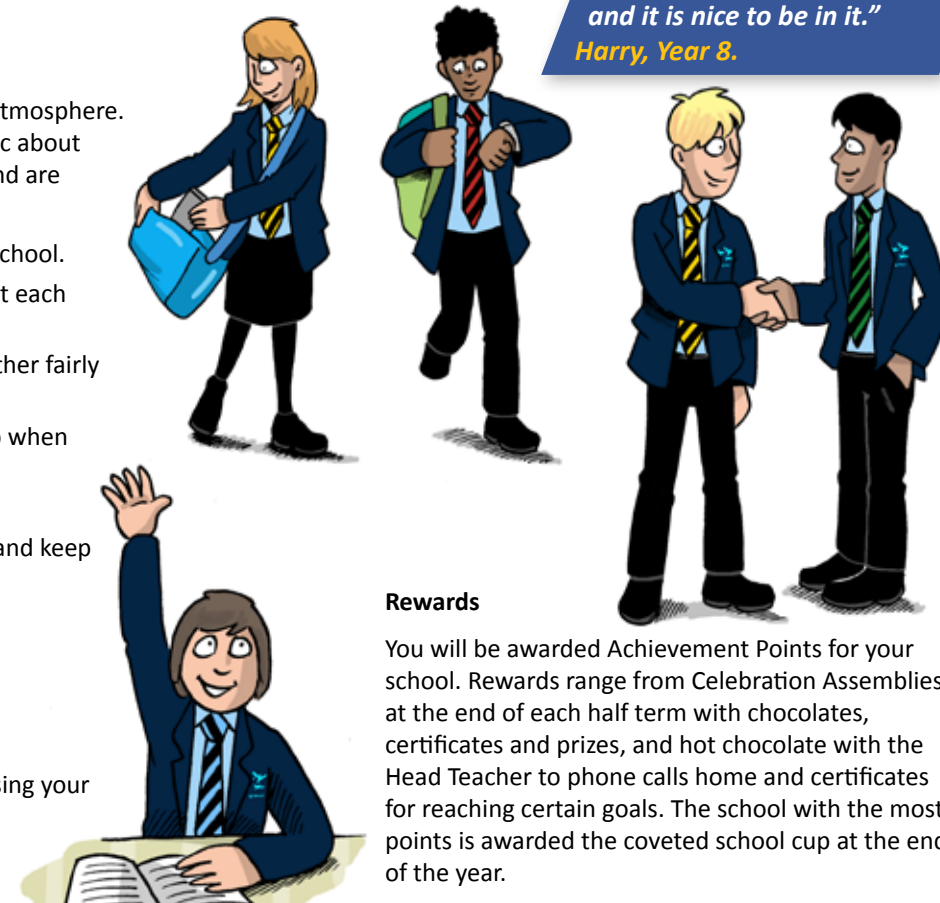
The Misbourne has a wonderful community atmosphere. Our students are happy, lively and enthusiastic about learning. We all follow The Misbourne Way and are guided by our school values, which are:

- Ambition and Pride – in yourself and your school.
- Kindness and Respect – in the way you treat each other and yourself.
- Equality and Moral purpose – treat each other fairly and morally.
- Resilience and Teamwork – pick yourself up when you fail. Try hard and work together.

And there are just a few key rules:

- Switch mobiles off when you are in school and keep them in your bag for the entire day.
- Arrive at school and all lessons on time.
- Be ready to learn.
- Be responsible for your behaviour.
- Be respectful of everyone.

We will work with you as individuals, recognising your strengths and areas where you need support.



"The Misbourne is a kind and respectful community and it is nice to be in it."
Harry, Year 8.

Rewards

You will be awarded Achievement Points for your school. Rewards range from Celebration Assemblies at the end of each half term with chocolates, certificates and prizes, and hot chocolate with the Head Teacher to phone calls home and certificates for reaching certain goals. The school with the most points is awarded the coveted school cup at the end of the year.

What happens on a school day?

The school day starts at 8.40am and ends at 3.10pm.

Every day there are five hour-long lessons and a break and lunchtime.

You will move to different classrooms for different lessons, but you will soon get used to finding your way round. It's a good idea to hire a locker so you don't have to carry your books and equipment round with you all day.

You will have new subjects and build on what you have learnt in subjects you have studied before.

Every day is different and full of exciting things to do in lessons!

You will study Art & Design, Drama, DT, English, Food Preparation and Nutrition, French, Geography, History, IT, Learning for Life, Literacy, Maths, Music, PE, Philosophy and Ethics, Science, Spanish... and even more at GCSE and A-level.



We have brilliant facilities, including:

- Dance studio
- Drama studio
- The school hall (with stage and lighting)
- Fully equipped science classrooms, DT facilities, home economics rooms
- Music rooms
- Outdoor sports pitches
- And we are currently building a brand new sports centre.



"All the teachers are really friendly and support you in everything you do. You settle in straight away."

Noah, Year 8.



Homework

You will also receive regular homework. We know that this will be an adjustment for you so it is given on a rota. This helps you to plan your schedule as you will know what you can expect each week. Homework is set via 'Satchel:one', which you can access on your phone, tablet or computer.

What extra-curricular activities can I take part in?

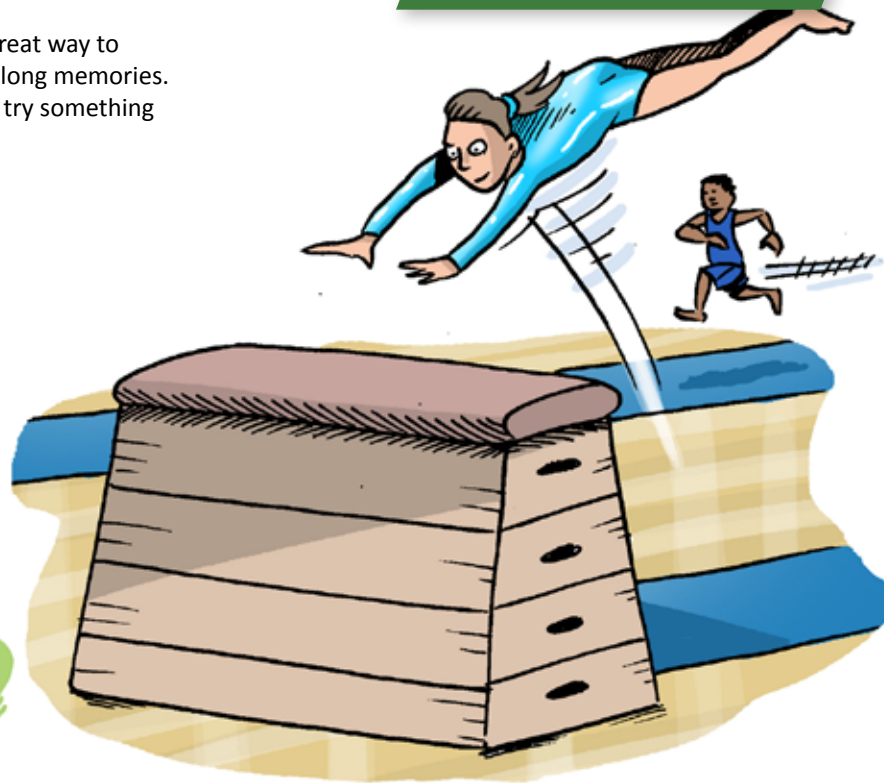
We have a fantastic range of clubs, activities, charity fundraising and trips that you can take part in.

There really is something for everyone and they are a great way to make new friends, discover new interests and make lifelong memories. It may feel challenging and out of your comfort zone to try something new, but you will learn so much by pushing yourself.



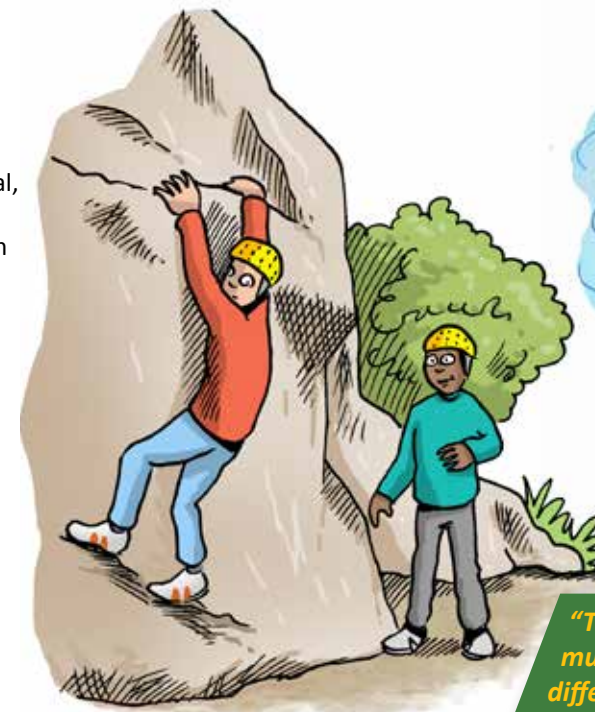
"This school offers so many opportunities that you can explore with the support of the amazing school staff."

Eadie, Year 8.



Clubs take place at lunchtimes and after school. We offer a wide range, including sports such as football and gymnastics, drama and music, and clubs related to your studies and special interests, such as chess or gardening.

You can also take part in trips and charity events throughout the year, including Comic Relief, Christmas Jumper Day, One-Can Trust Food Appeal, bake sales, raffles, school quizzes and litter picking in the community.



"This school offers so many opportunities with multiple different after school clubs to do, and different tasks in class to enjoy."

Phoebe, Year 8.





"I hope you have a great time here. It is 100% guaranteed that you will make new friends. Wishing you good luck."

Charlie, Year 7.



THE MISBOURNE

Misbourne Drive, Great Missenden, Buckinghamshire, HP16 0BN

Telephone: 01494 862869

Email: admin@themisbourne.co.uk or transition@themisbourne.co.uk

Website: www.themisbourne.co.uk

Twitter: @TheMisbourne