



Welcome to Whitworth Community High School
Climbing Higher



How will Whitworth Community High help me get ready to come to secondary school?

Starting secondary school is a big step and we understand that you may be feeling both nervous and excited right now. We have put this booklet together to help you feel prepared and informed, ready for when you start with us in September.

We are all looking forward to meeting you and we will all do as much as possible to welcome you and help you settle in quickly.

You may have already met Mrs Cawley, our Year 7 Progress Leader, when she visited your primary school. To help you get ready, you will also be attending a special 'Year 6 Day' at Whitworth, where you will get to meet your new tutors, learn the layout of the school and have some taster lessons. This will help you get a good feel for the school.

We have gathered lots of information from your primary teachers about you as individuals, and learners, to help you get off to a great start.



How should I get ready for my first day?

Smart appearance is very important to us at Whitworth Community High School. We are very proud of our uniform and expect high standards of presentation from your very first day.

We have provided parents and carers with comprehensive information about what is required and you can also find lots of information on our website.



Equipment List

Students must have their planner with them at all times, and a book to read for registration.

You will need a robust, large school bag with the following equipment:

- 2 black pens
- Purple pen
- Pencil
- Ruler
- Rubber
- Calculator
- Spanish pocket dictionary

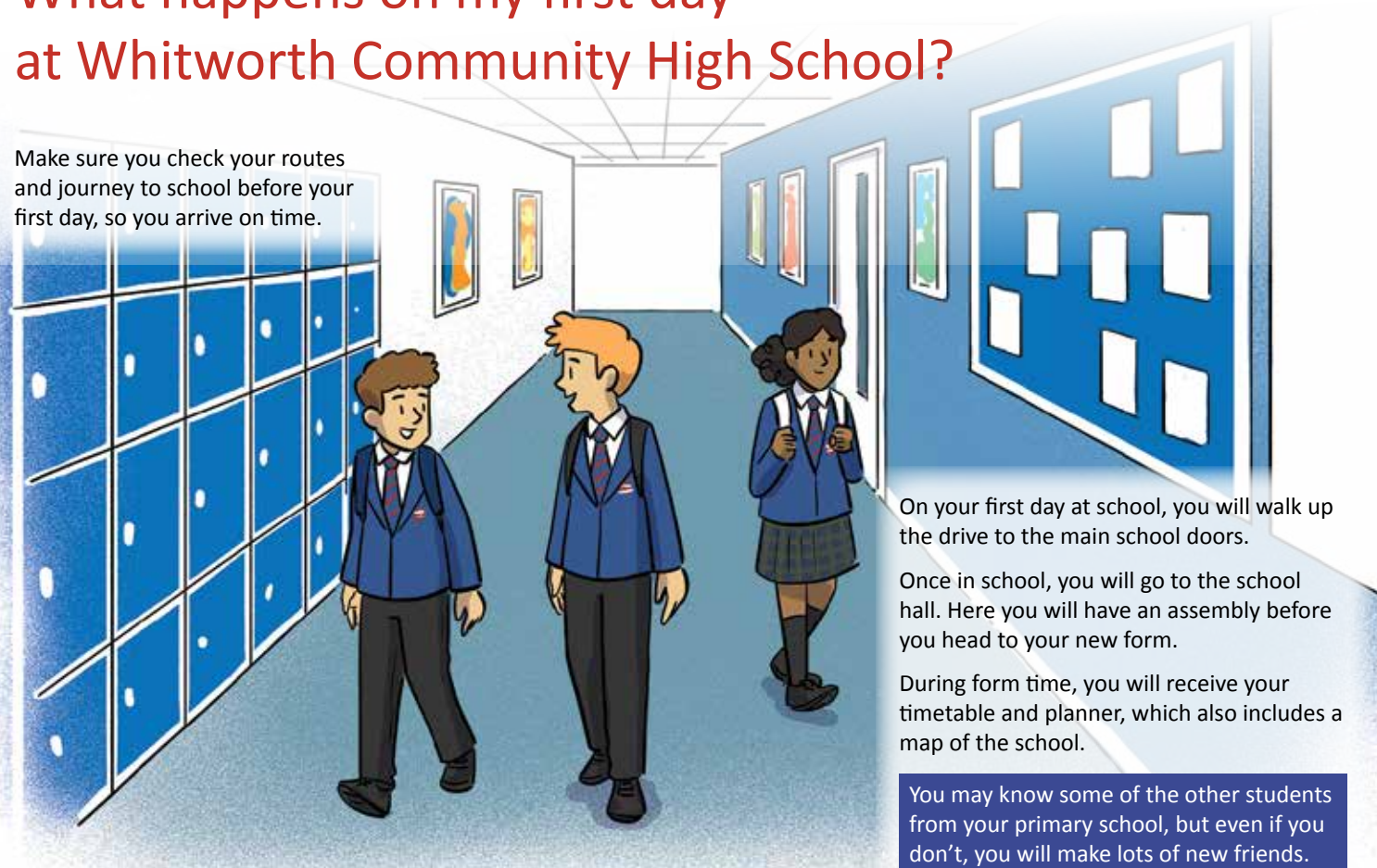
You will also bring your PE kit when needed.

We will provide you with a locker. You just need to pay £5 for the key.



What happens on my first day at Whitworth Community High School?

Make sure you check your routes and journey to school before your first day, so you arrive on time.



On your first day at school, you will walk up the drive to the main school doors.

Once in school, you will go to the school hall. Here you will have an assembly before you head to your new form.

During form time, you will receive your timetable and planner, which also includes a map of the school.

You may know some of the other students from your primary school, but even if you don't, you will make lots of new friends.

You will then start your lessons for the day.

Don't worry about getting lost, you will soon get used to the layout of the building.

There are lots of staff, Student Ambassadors and prefects around to ask for help.

Make sure you look out for the one-way signs when moving around the school.

Everyone is friendly and welcoming and will do whatever they can to help you, so please don't be afraid to ask any questions.



What does the school day look like?



You will move around the school for different classes.

This is what our school day looks like:

8:40 to 9:10	Form/Assembly
9:10 to 10:10	P1
10:10 to 11:10	P2
11:10 to 11:25	Break
11:25 to 12:25	P3
12:25 to 12:55	Lunch
12:55 to 13:25	Lesson 4a
13:25 to 13:55	Lesson 4b
13:55 to 14:55	P5

What will I study?

You will study new subjects and build on what you have learnt in subjects you have studied before. Every day is different and there are lots of exciting things to do in lessons.

You will study a wide and varied curriculum including the following subjects:

Maths, English, Science, History, Geography, RS, MFL, PE, DT, DT Food, Art, Music, Drama, Performing Arts and Computing.



Lunch

A choice of delicious hot and cold food is available to purchase from our pasta bar, sandwich bar and hot lunch bar. You can also bring a packed lunch, if you prefer.

We operate a cashless fingerprint system using ParentPay. Your parents/carers will be sent information about this.

You can also purchase a range of tasty snacks at break time including: soup, crumpets and hot breakfast sandwiches.

What is expected of me?

We have seven 'Respects or Expectations' that we all must follow at school:

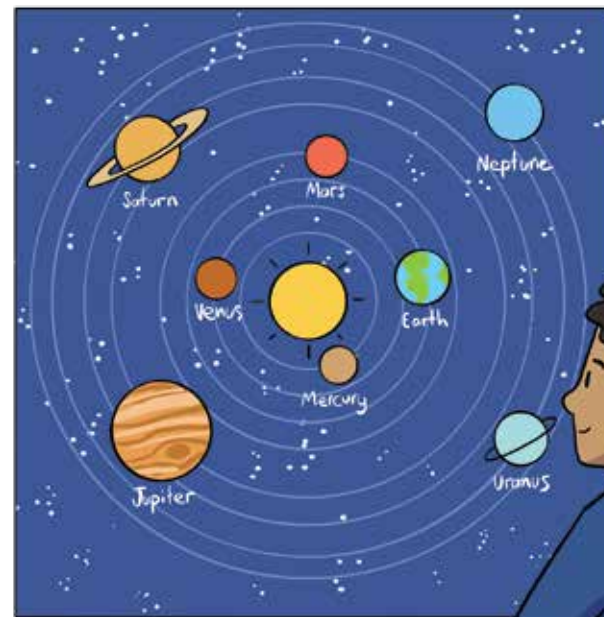
1. Speak respectfully to staff
2. Behave respectfully to staff
3. Speak respectfully to other students
4. Behave respectfully to other students
5. Have respect for your own learning
6. Have respect for other people's learning
7. Have respect for the school environment, the local community, and for our reputation.

What if I need help?

You can speak to your Form Tutor, Mrs Bower (our Pastoral Manager), Mrs Cawley (our Year 7 Progress Leader) or Miss Davies (our SENDCO).



What happens when I have done well?



Students will receive our 'Reach for the Stars' Solar System reward postcards (named after planets), when they collect the relevant number of Achievement Points.

Celebrating Student Success

Attainment, achievement and progress are key to life at WCHS. You will get awarded Achievement Points for **excellent work, effort, contribution to school and lessons**, and for **taking part in extracurricular activities**.

Students with the highest points totals are recognised as '**Half Term Heroes**'. Termly Commendation Assemblies celebrate the achievements of students whose teachers have nominated them for top attainment or top effort in their subjects with the awarding of Bronze, Silver and Gold stars.

You can also get invited to Head Teacher Coffee Mornings for outstanding work, contribution to school, or achievements beyond school. Our annual Awards Evening recognises the achievements of students throughout the year.

Homework

We have high expectations of homework, as it is such an important part of your extended learning at Whitworth Community High School. Homework is a great way of recapping and revisiting things you have learnt and helps you to be fully prepared for your next lesson.

What extra-curricular activities can I take part in?

We have a wide variety of clubs, activities and trips that you can take part in. These are a great way for you to make new friends, find new interests, develop lots of new skills and have fun!

We have lots of sports clubs including:

**football, netball,
karate, climbing
and cricket.**

We also have

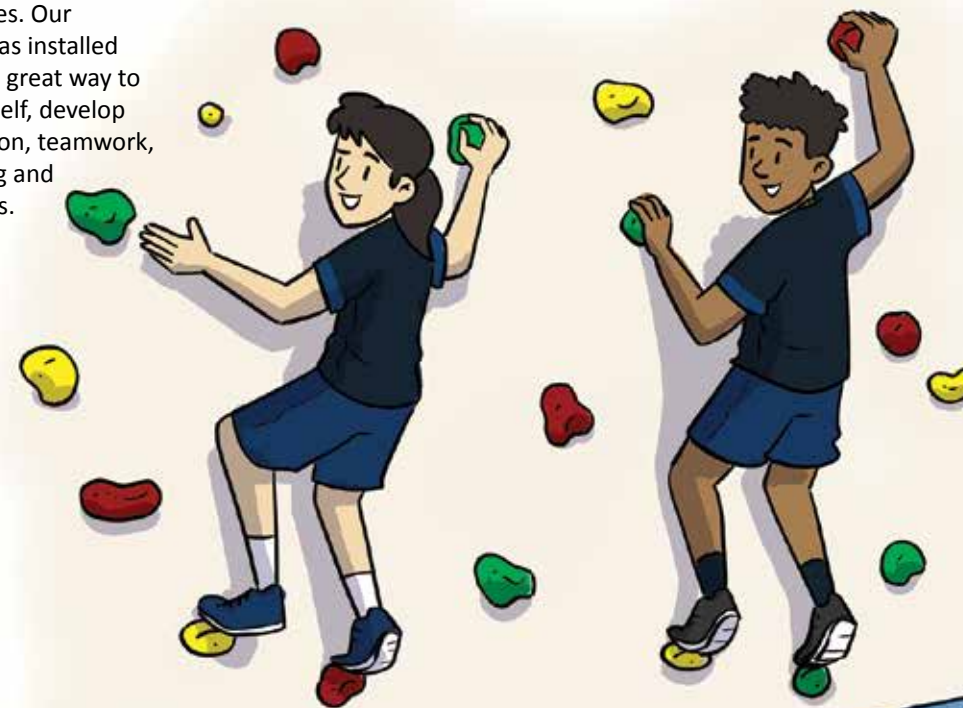
**Musical Theatre Club,
Spanish Club, STEM Club**

and lots of other interesting clubs and activities. There is something for everyone to enjoy.

As you move up the school, you can also take part in The Duke of Edinburgh's Award Scheme.



We are very proud of our climbing facilities. Our climbing wall was installed in 2022 and is a great way to challenge yourself, develop your coordination, teamwork, problem-solving and confidence skills.



Trips

We run lots of amazing and exciting trips abroad, throughout your time at Whitworth. These include: skiing trips, sports trips and European trips.

In 2023, we will be moving into our brand-new building, with lots of new and exciting facilities!

We can't wait to welcome you to Whitworth Community High School



Whitworth Community High School

Hallfold - Whitworth - Rochdale - OL12 8TS

Tel: 01706 343218

Email: office@whitworth.lancs.sch.uk

Website: www.wchs.co

