



The  
Beaconsfield  
School

A Specialist Arts College

Discovering the Potential in All

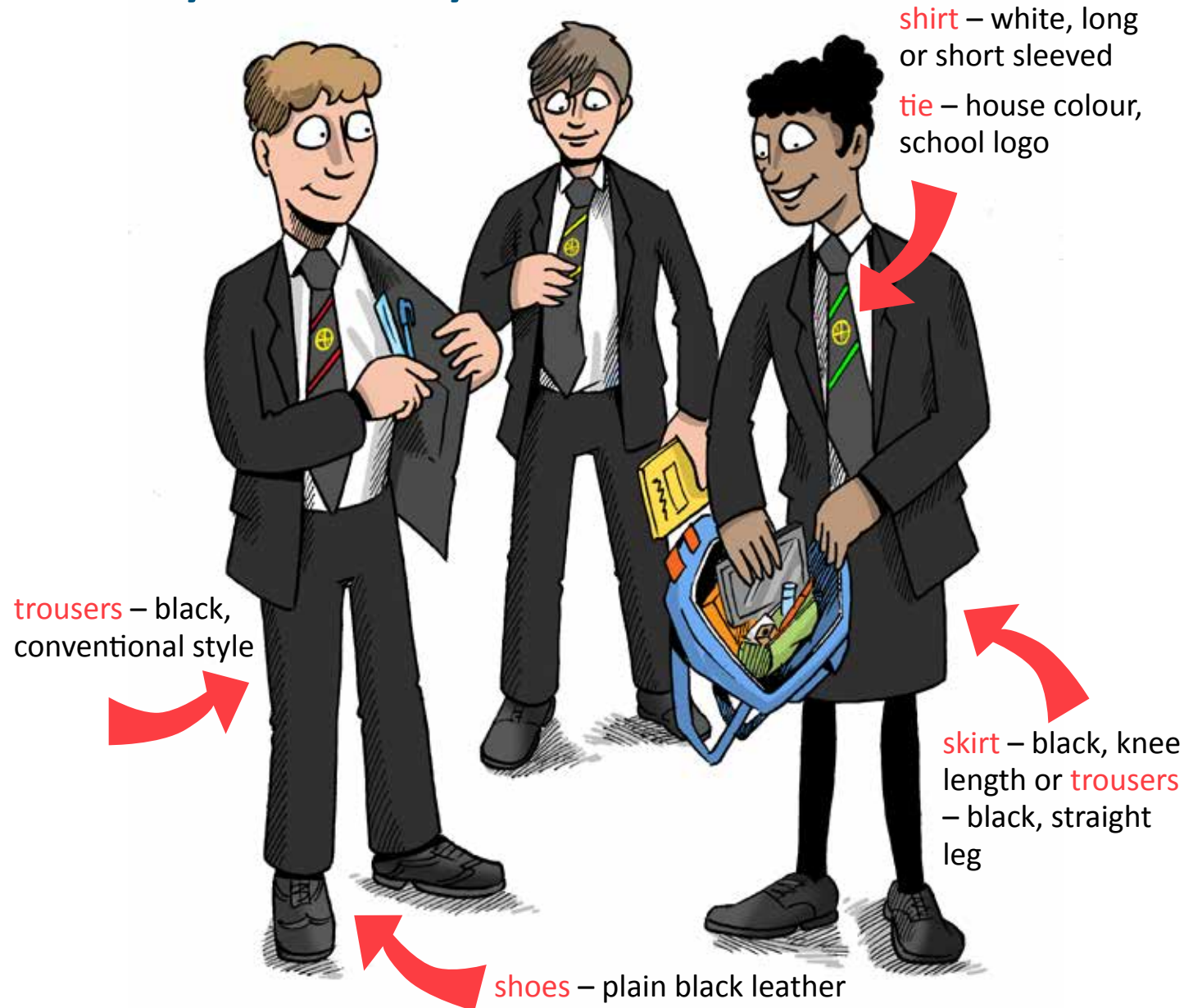
WELCOME  
TO THE  
BEACONSFIELD  
SCHOOL



Here is your guide to joining The Beaconsfield School.  
We hope it has all the information you need to help you  
settle in and tell you about our fantastic school.



# How should I get ready for my first day?



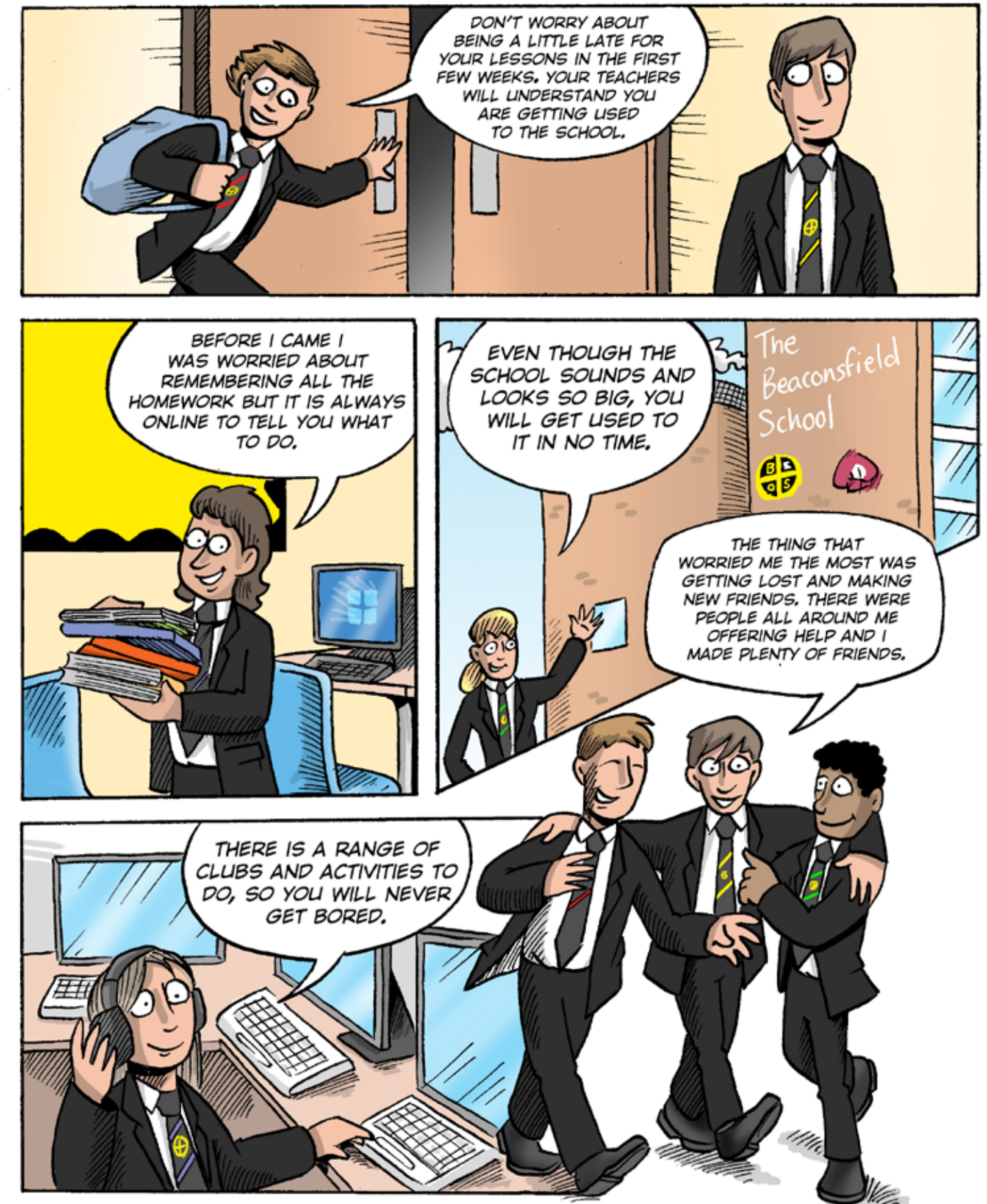
We have high standards of presentation and expect you to look smart at all times. You should come to school fully prepared for all lessons, which means bringing:

- Your electronic device (from January)
- Books required for your lessons
- Completed homework
- Fully equipped pencil case with black/blue/green pens, pencils, eraser, glue stick, sharpener, ruler
- Calculator

Please ensure you have a suitable rucksack to carry all your belongings from lesson to lesson.

# Settling in at The Beaconsfield School

We know it can be daunting starting at a new school. Here is what some of our pupils say.





# How will you help me to settle in?

We want you to settle in as easily and as quickly as possible. Getting to know your way round school and how everything works is an important part of settling in. But even more important is getting to know your new classmates and making friends.

We have a range of special days and activities which will help you to feel part of our community. We run the following events:

- Year 6 Induction Day – You get the opportunity to visit our school for two days, spending time with current Year 7s in their lessons.
- We have a transition programme in June for small groups of select children who work on activities together. There is also a tea party hosted by students for those coming from a primary school on their own.



- We have a Summer School in late August at the school where you can take part in team-building exercises, sporting activities and a treasure hunt, and there are other fun games.
- On your first day of the academic year, you have a day at the PACCAR Scout Camp, taking part in activities which are designed to help you get to know your new classmates and increase your self-confidence. You can try orienteering, indoor caving, archery, crate stacking, zip wires, wood trail and high ropes. This is a fantastic way to get to know other students on your first day at school.
  - During the first term there is a transition group for select children to provide a supportive, nurturing environment and develop resilience.



# What happens when you are here

Our school motto is "Discovering the Potential in All". We will work with you throughout your time with us to help you to reach and exceed your potential.

## Houses

When you join us, you will become part of our school community and are assigned a "House". Our five houses cover all years, and there is lots of friendly competition between the houses for attendance, punctuality, sports and activities. Each house has its own school tie, so you will be able to tell who else is in the same house as you.

Our houses are **Bussell**, **Hockney**, **McCartney**, **Mackintosh** and **Rowling**, all named after famous people who have overcome adversity and achieved excellence.

You will have opportunities to achieve house points through recognition of your achievements or your good manners and values.

## What do you expect from me?

To make sure we are all working to keep our school a happy and successful community, remember the Three 'R's.

The three 'R's:

### Ready:

Be on time and ready to learn and to listen to your teacher. Come with a "can-do attitude"

### Respect:

Show respect for your own learning, other people and the school environment

### Responsible:

Take responsibility for your own learning and behaviour, and be supportive to fellow students

## Join in

We want you to make the most of your time with us and have a wide variety of opportunities for you to experience. We know that students who get involved with school life do better academically and socially, so we really want you to **jump in**.

We want you to be as ambitious about your future as we are. So, join a club, join a team, join the school council, take part in a school production – you get out what you put in!

## What happens if I have any worries or problems?

For you to do well and feel happy at our school, you need to feel secure and supported.

We have a special team who are here to look after you. From the day you start here you will be looked after by a group of Mentors and Year Leaders. They will get to know you and offer you support, guidance, encouragement and help. The main thing is that you let us know if you have any worries. It is always best to talk. We promise we will listen and take your concerns seriously.

Ready



Respect



Responsible



# What does the school day look like?

One of your biggest adjustments will be getting used to the school day. You will need to be in school at 8.25 am, and the school day starts at 8.35am. If you are not in school by 8.35am you will be marked in as late and we will notify your parents/carers. This is to make sure you are safe, as well as ensuring that lessons are not disrupted by people turning up late.

Every day you will have six lessons and you will go to different classes for each lesson.

Time	Activity	Time	Activity
08.35–08.55	Mentor Time-Registration	10.55–11.45	PERIOD 3
08.55–09.45	PERIOD 1	11.45–12.35	PERIOD 4
09.45–10.35	PERIOD 2	12.35–13.05	LUNCH
10.35–10.55	BREAK	13.05–13.55	PERIOD 5
		13.55–14.45	PERIOD 6

You will have a 20 minute break in the morning and 30 minutes for lunch.

## Lunch

You can get your lunch at the 'Hub'. We have a fantastic range of meal options and it's very easy to pay using fingerprint technology. You can also bring packed lunches.

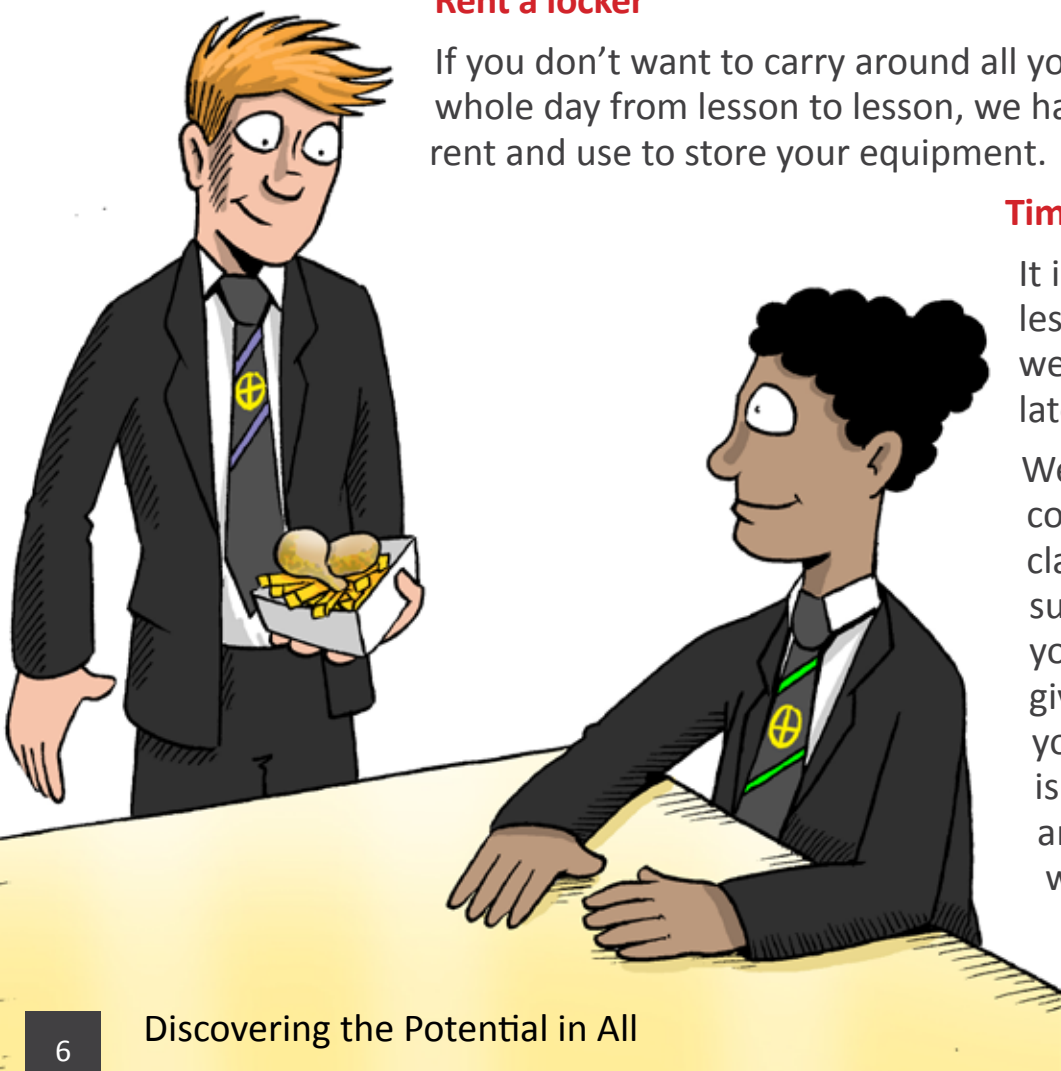
## Rent a locker

If you don't want to carry around all your belongings for the whole day from lesson to lesson, we have lockers that you can rent and use to store your equipment.

## Time-keeping

It is important to get to your lessons on time, although we will understand if you are late when you are settling in.

We will give you a map, a copy of your timetable with classroom numbers and subject details. We will help you find your way round and give you extra support until you are settled in. Everyone is here to help, so if you lose anything, or can't find your way, just ask!

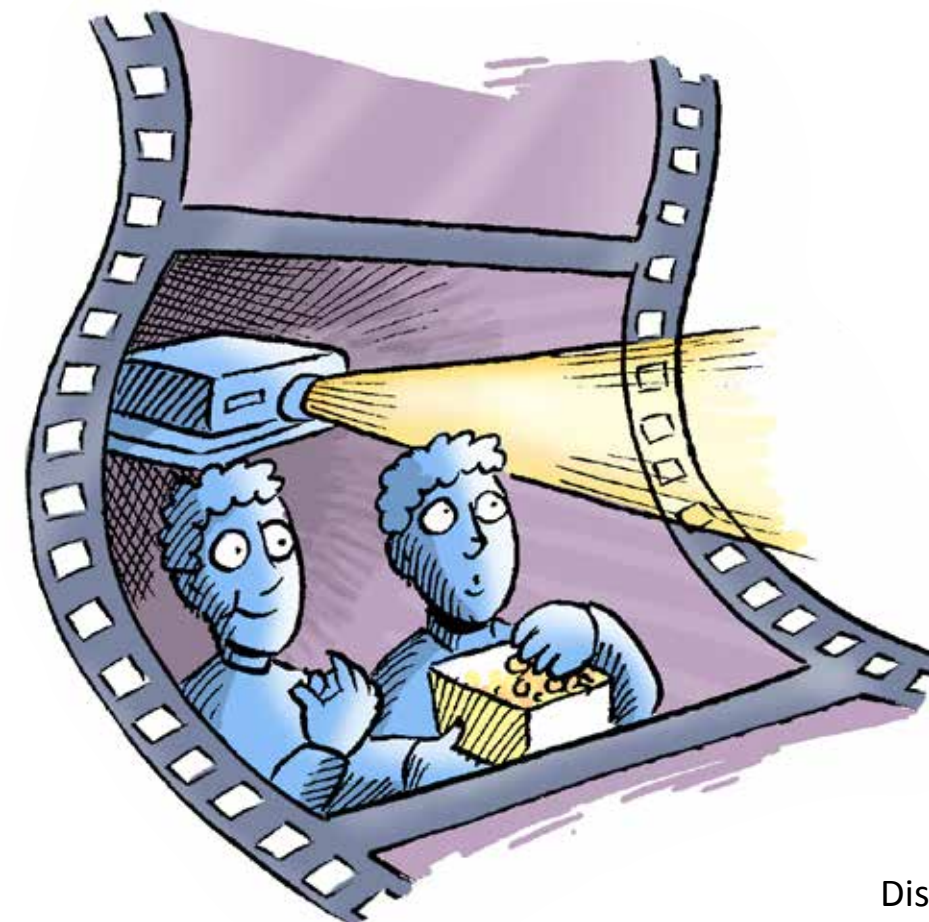
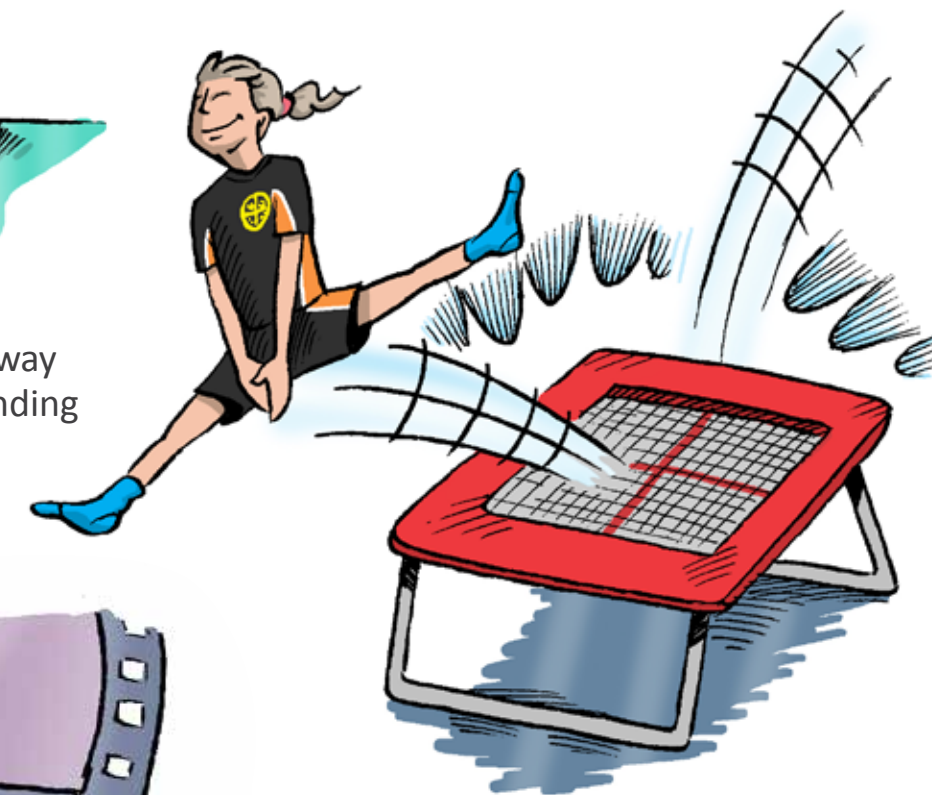


# What other activities can I get involved in?



We have over 70 lunchtime and after-school clubs for you to get involved with across a range of activities: sports, drama, music, dance, film, design and technology, and languages. We also run a homework club every day. The library is open for an hour after school for reading and general research.

There really is something for everyone. Our clubs are a great way to make new friends, perhaps finding something that you will have a lifelong passion for or skill in.



We run a variety of educational trips throughout the year and we also run motivational assemblies with guest speakers.

Have a look at what is on offer. Perhaps try something you haven't done before.

# Answering your questions

You probably have lots of questions. Here are answers to some of the ones our new pupils ask every year:

## What happens if I am late?

It is very important to arrive on time, so allow plenty of time for your journey and for any unexpected delays. School starts at 8.35am.

If you are late you will need to sign in at Student Support. The double doors entrance is near the roundabout next to the bicycle sheds.

## What homework will I get?

You will get regular homework but not for every subject every day. We publish a homework timetable, so you can plan out your weeks. Your teachers will ensure that you have enough time to do it. Homework is an important part of learning and helps you to develop independent study skills. It is also important to do it properly and hand it in on time. Homework is set online via "MILK" and we will show you how this works when you start. We run a homework club every day until 3.45pm if you would prefer to stay in school and complete your homework.

## When can I use the toilets?

Toilets are open during break and lunchtimes only to cause the least possible disruption to lessons. We ask you to keep them clean and tidy.

## What happens if I feel unwell?

If you feel unwell during the day, please let your teacher know, who will contact Matron.

## Who can I contact if I have any more questions or concerns?

Please let us know if you have any more questions. Anyone here can help, but the best people to contact are:

- Your House Mentor
- Leader of Year 7, Mrs N Hodgson
- Student Support/Pastoral –  
Mrs K Borgia, Mr S Ayoub, Mrs A Wood

## Can I use my mobile phone at school ?

Mobile phones must be switched off throughout the school day, but if you need to get an urgent message home, there is a public telephone outside the Main Hall or the ladies in Reception can pass a message on.

## We look forward to meeting you!

The Beaconsfield School  
Wattleton Road,  
Beaconsfield,  
Buckinghamshire  
HP9 1SJ

Tel: 01494 673450

Fax: 01494 676404

Email: [office@beaconsfield.school](mailto:office@beaconsfield.school)

Website: [www.beaconsfield.school](http://www.beaconsfield.school)



The  
Beaconsfield  
School

A Specialist Arts College


Discovering the Potential in All



 **easyfundraising**  
feel good shopping

 **goldengiving**

 TBeaconsfieldSchool

 @BeaconsfieldSch