



WELCOME TO YSGOL BRYN ALYN

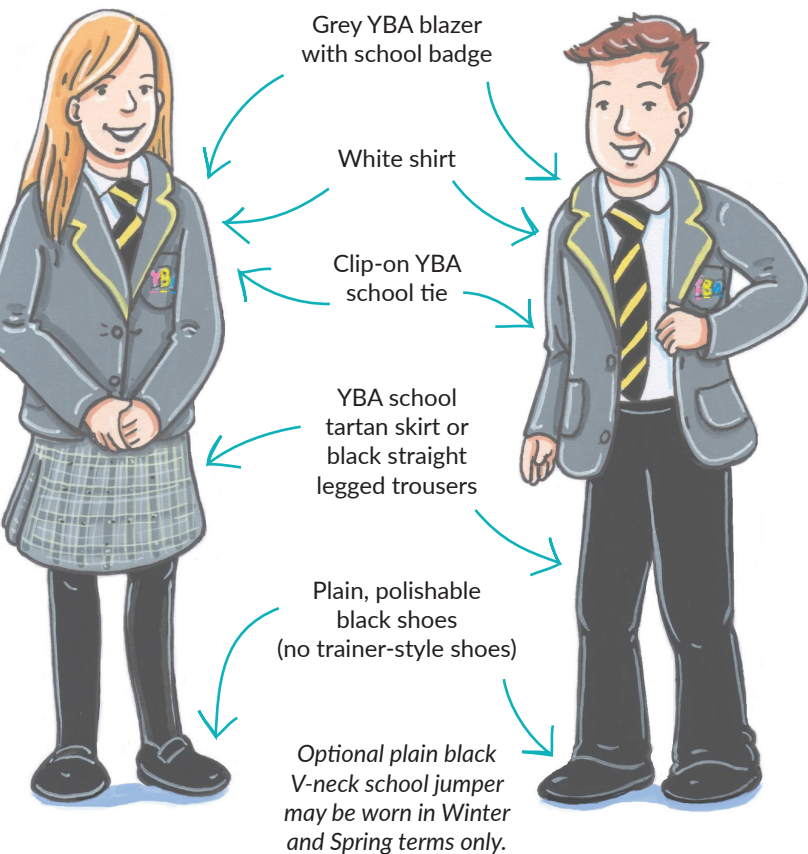
YOUR POCKET GUIDE



DREAM. REACH. ACHIEVE

What do I wear on my first day?

We have high standards for personal presentation at YBA, so it is important to wear the correct uniform from your first day.

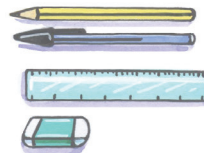


What equipment will I need?

You will need to bring the following basic items every day, carried in a bag which is big enough to fit A4 sized books or folders:



- Pencil case
- Pen
- Pencil
- Rubber
- Ruler
- Highlighter
- Purple pen
- Wired headphones



We also recommend you bring the following items:

- Scientific calculator
- Geometry set
- Coloured pencils
- Coloured pens
- Glue stick

Don't forget to bring a packed lunch if you are not using our canteen.

Top Tips

- Pack your bag the night before.
- Make sure that everything is labelled and not shared with your classmates so you don't lose anything.

What does the school day look like?

There are five lessons each day with a morning and a lunch break.

Registration (with your tutor)	8.40am–9.00am
Lesson 1	9.00am–10.00am
Lesson 2	10.00am–11.00am
Break (20 minutes)	11.00am–11.20am
Lesson 3	11.20am–12.20pm
Lesson 4	12.20pm–1.20pm
Lunch (40 minutes)	1.20pm–2.00pm
Lesson 5	2.00pm–3.00pm

You will move between rooms for each lesson. Don't worry about getting lost - we will give you a map and show you where everything is. Everyone at YBA will be happy to help as well.

Pupils of all ages are encouraged to join various book clubs, quiz teams and often get to meet visiting children's authors.

The school has extensive sporting facilities, including the Gwyn Evans Sports Hall, swimming pool, gymnasium, rugby and football fields and a floodlit Multi-Use Games Area



Top Tips

- Plan your journey before your first day so you know the route and timings.

What will I study?

Subjects you will study:

English

Maths

Science

Welsh

Geography

Spanish

Music

Nutrition

D&T

PSE

ICT

PE

RE

Reading and Oracy

We encourage you to develop a love and appreciation of reading over a wide range of books and written materials. You can also access the library during morning break and lunchtimes.

Extra support

We also run the More Able and Talented (MAT) programme, which supports students who show academic or sporting promise.



Top Tips

- Work out your schedule every week to include homework.
- Join at least one club. There is something for everyone!

What about food?

Breakfast club from 8am–8.30am serves hot drinks and toast. You can use the canteen at break and lunchtime. Your parents/carers will pay into an online account, so you don't need to bring any cash. We have an amazing menu with anything from snacks, sandwiches, paninis and salads to main meals and desserts. We also cater for allergies and vegans/vegetarians.

What else will I do at YBA?

We run teams for football, rugby, cricket, tennis, rounders and netball. We also have athletics and gymnastics opportunities.

We have an amazing music provision, including bands, orchestras and the chance to take part in our Showcase Concerts and the Eisteddfod!

In Year 10 you can take part in The Duke of Edinburgh's Award scheme. We run theatre trips and outdoor activities. We also have a brilliant Enrichment Week in the summer term where you can go on trips and take part in fun activities.

Where do I fit in?

We are all friendly and welcoming at YBA and we will help you settle in quickly and confidently.

School houses

As well as joining a form, you will also be a member of one of our six school houses: **Glyndŵr**, **Llewelyn**, **Campbell**, **Morgan**, **Cadwaladr** and **Gwenllïan**. They represent Welsh men and women who display values we would like you to emulate.

We hold regular house competitions and you can collect points to win the House Cup each year.

What if I need help?

Everyone has worries and problems from time to time, and we know that moving to secondary school is a big change in your life. If you are struggling with anything at school (or outside) speak to your Form Tutor, Head of Year or any member of the pastoral team. You can speak to whoever you feel most comfortable talking to.



What will you expect from me?

We are proud of our brilliant school and our wonderful community of students, teachers and staff.

Our values are “**DREAM**. **REACH**. **ACHIEVE**” and everything we do at YBA is aimed at helping you achieve your full potential.

We follow the REACH approach:

Resilience

You will learn how to bounce back when things haven't gone as well as you hoped and see how this helps build your character.

Effort

You will see how effort in everything brings success and self-confidence.

Aspiration

We want you to have big dreams for the future and to help you work towards achieving your goals.

Cooperation

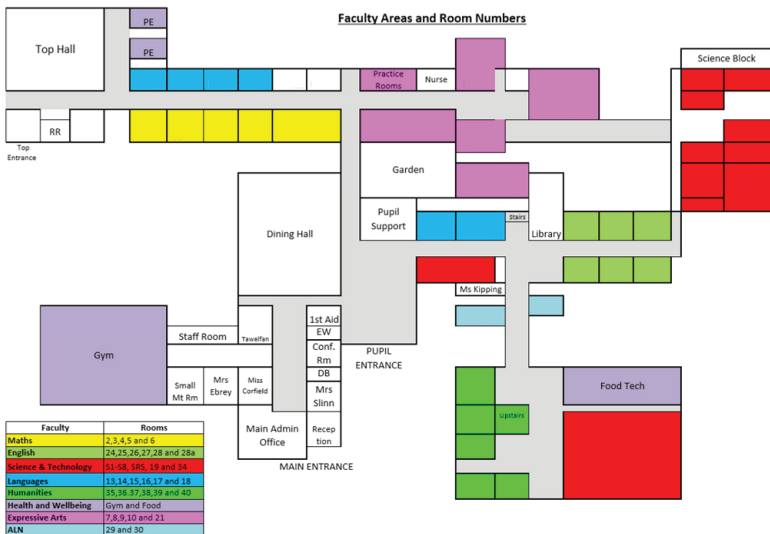
YBA has a caring and supportive environment where we help and encourage each other.

Honour

You will honour YBA, your friends and family and, most importantly, yourself!



Here is a map of YBA



Ysgol Bryn Alyn

Church Street, Gwersyllt, Wrexham, LL11 4HD

Tel: 01978 720700 Email: mailbox@ysgolbrynalyn.wrexham.sch.uk

Website: www.ysgolbrynalyn.co.uk

Devised and produced by Stoneworks Education Ltd www.stoneworkseducation.co.uk

© Stoneworks Education Limited 2014-2023. All rights reserved.