

Jack, Lily and Mira are coming to St Mary's CE Primary School



When you come to school, your grown-ups will bring you to the back classroom door or take you into the classroom.



"Here is the door, Mummy," Lily says. She is very excited about starting school.

You will hang your coats and belongings up in the coat peg area outside the classroom, just like Jack is doing.



Then you will sit on the carpet and practise writing your name on a mini whiteboard until everyone arrives and the school day starts.

What will I do in school?



You will make friends and learn as you play. You will do some activities with your teacher, but most of the time you can choose what you want to do. You will love sharing games and toys with your new friends.



Lily and Mira are using the play tent.

"I will read you a story until you go to sleep," Mira says.

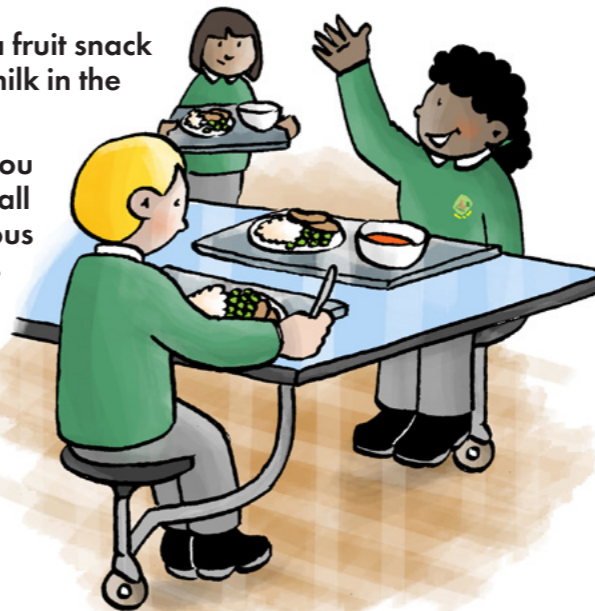
Jack and Lily are outside on a trike together. **"Shall we go to the seaside?"** Jack asks.

The children are having so much fun!

What if I am hungry or thirsty?

You will have a fruit snack and water or milk in the morning.

At lunchtime, you will go to the hall for your delicious meal. Mira has collected her lunch from the serving area.



"Come and sit with us," Lily says.

You will use your cutlery by yourself, but there will be lots of kind lunchtime staff if you need help.

What if I need the toilet?



The toilets are in the classroom and you can go whenever you need to.

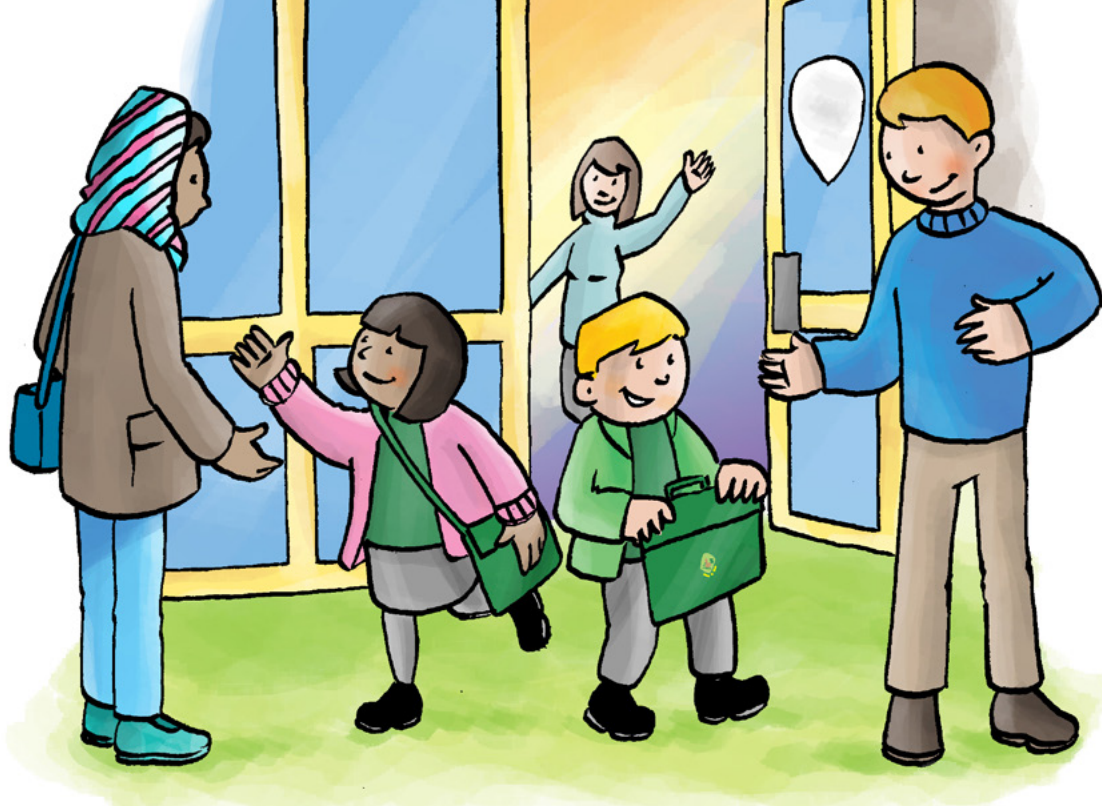
Mira is washing her hands with soap and water so that germs don't spread.

"I'm glad that I practised going by myself lots before I started school," she says.

At the end of the school day, you will collect your coat and belongings.

Then your teacher will go to the door and let you go when they see your grown-ups outside.

"I can't wait to come back to school tomorrow," Jack says.



St Mary's is split over 2 sites a few minutes walk from each other. You can contact the school in the following ways:

St. Mary's CE Primary School
Rectory Gardens (Years 3-6)
Hornsey, London N8 7QN

what3words: ///train.public.agreed
Please address written enquires to The Admin Team

St. Mary's CE Primary School
Church Lane (Nursery – Y2)
Hornsey, London N8 7BU

what3words: ///hops.status.begin

Telephone: 020 8340 4898
Choose option '1' for Rectory Gardens (Years 3-6) or
Choose option '2' for Church Lane (Nursery to Year 2)
Email: office@stmarysn8.co.uk

SENCo
Our Special Educational Needs Coordinator and the Lead Designated Child Protection Officer can be contacted through the office. The email is office@stmarysn8.co.uk or telephone on 02083404898