



# Welcome to **Grove Academy** New Starter Guide

*Successful, Welcome and Included*



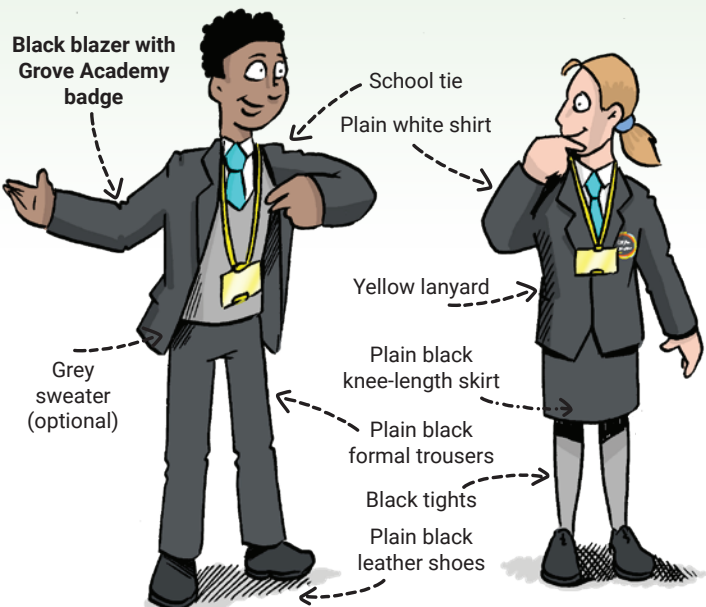
# How should I get ready for my first day?

At Grove Academy, we have high expectations for students entering Year 7. We want all students to follow the 'Grove 5' in the classroom and be:

**Relentless Readers, Knowledge Retrievers, Critical Connectors, Quality Talkers and Active Learners.**

## Uniform

We also expect high standards of behaviour and presentation, and that starts every day by wearing the correct uniform.



Head coverings or hijabs, if worn, should be black. You should also bring your PE kit on the days when PE is on your timetable. Trainers are not permitted.

## Equipment

You will also need to bring in the following items each day:

- A pencil case containing
  - Black, blue and green biro
  - Pencil
  - Eraser
  - Pencil sharpener
- Ruler
- A set of coloured pencils
- Different colour pens or felt tips
- Highlighters
- Calculator



You will also bring your PE kit when needed.

All uniform and equipment should be labelled with your name.

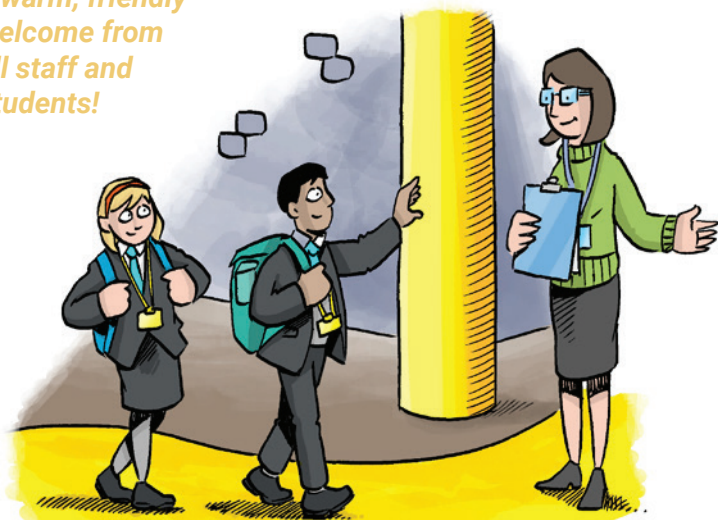
Please remember that no phones, smart watches, AirPods, headphones or any other unauthorised electronic devices from home are to be used in the school building.

## What will happen on my first day?

Some students will have already attended Grove Academy's primary school but lots of you will be completely new to the school. Wherever you have come from, starting Year 7 is a big change and we will give you lots of help to settle in.

You will probably be feeling a mix of emotions such as excitement and nervousness. Everyone else in Year 7 will be feeling the same, even if they don't show it, so it is a good idea to break the ice and start chatting to your classmates.

***We promise you a warm, friendly welcome from all staff and students!***



## What happens in a school day?

**This is what the daily timetable looks like:**

<b>7:45am</b>	Breakfast club (no entry after 8:05am)
<b>8:30am</b>	Tutor time / Assembly
<b>9:00am</b>	Lesson 1
<b>10:00am</b>	Lesson 2
<b>11:00am</b>	Break/lunch
<b>11:30am</b>	Lesson 3
<b>12:30pm</b>	Break/lunch
<b>1:00pm</b>	Lesson 4
<b>2:00pm</b>	Lesson 5
<b>3:00pm</b>	Year 7 finish (on Friday, the Year 7 school day finishes at 2:30pm)

### Library

The library is open from 8:00am to 4:00pm every day (8:30am to 2:30pm on Fridays) and lots of students visit before, after school, or during breaks. You can borrow books or use the space to read or revise or complete homework.

We also have a range of e-books which you can access from anywhere!

### What about food?

Food is provided in The Bistro by our brilliant chefs. It is easy to buy food using our cashless ParentPay account, which your parents/carers will pay into. If you have free school meals, you will use the same cashless system as everyone else. We also have a range of breakfast food available.

At lunch, we have an amazing range of hot and cold food to suit all tastes. You can also get snacks from the **servery hatch** window or **The Snack Shack**. Note that chewing gum, fizzy drinks and energy drinks are not allowed in school.

**Please note that on the first day of school, you will not be on the lunch system so will not be able to get lunch from The Bistro. Instead, please bring a packed lunch.**



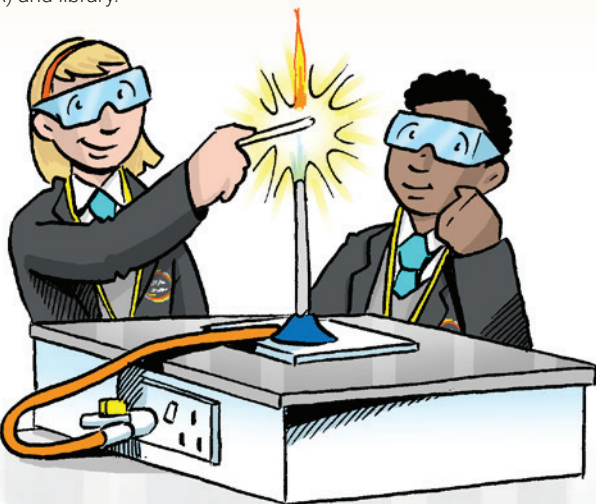
## What will I study?

You will study English, maths, science, PE, geography, history, religious education, drama, music, art & design tech, PSHE, MFL, photography, food tech and computer science.

You will move classrooms for your lessons but you will have time to get to your next lesson. Staff and other students will be happy to help you.

### Facilities

Our brilliant new school building has fantastic facilities, including fully equipped classrooms and science classrooms, DT facilities, home economics rooms, drama studio, sports hall, fitness studio, main school hall (with stage and lighting), Multi-Use Games Area (MUGA) and library.



## What extra curricular activities can I take part in?

We have a brilliant range of clubs, activities, charity fundraising activities and trips that you can take part in.

These activities add so much to your experience in secondary at Grove Academy.

We usually run activities before school, during breaks and after school.

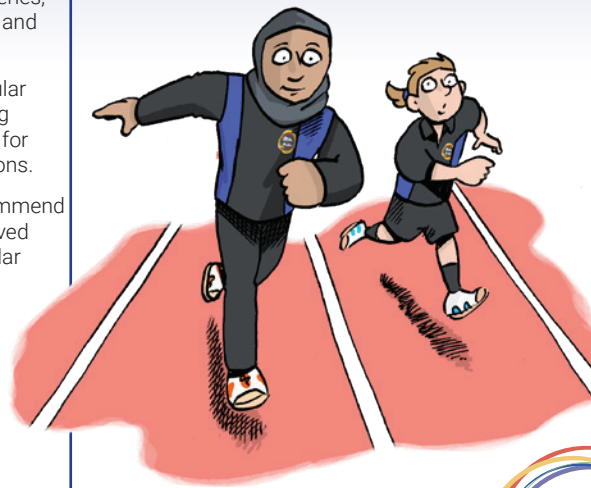
Clubs we usually run include badminton, indoor football, fitness and netball. We have also run choir, dance, drawing, drama, DT, science and GGT (Grove's Got Talent). The clubs running are dependent on the availability of adult leaders and student interest.

### Trips and other events

We also run regular trips to museums, galleries, places of interest and lots more.

We also hold regular charity fundraising activities such as for food bank donations.

We strongly recommend that you get involved with extra curricular activities. They are a great way to make new friends, find a new interest and challenge yourself!



# FAQs

## **What if I need help with finding my way around or I have any other questions?**

Everyone here is very friendly. If you are new to Grove Academy, classmates who attended the primary school may know the answer. Your Form Tutor can help as well, but any teacher or member of staff will be happy to help.

## **Who can I talk to if I am worried about anything?**

You can speak to any member of staff, but the best person will be your Form Tutor. You will see them every day and get to know each other well. You can also speak to your Head of Year. If you are struggling with school work, you can get help from one of our Learning Mentors. There is lots of help available, and whoever you speak to will always give you time to talk and listen.

## **What about homework?**

Homework is set on ClassCharts so it is easy to manage. Try to do homework on the day you get it, as this will help you stay ahead and complete it to the best of your ability rather than in a last-minute rush. It will also allow you time to see your teacher if you need help or support.

You will get a ClassCharts login and other curriculum logins when you start.



***We are thrilled to welcome you as part of the Grove Academy community.***

**Grove Academy**  
Ladbroke Road, Slough, SL1 2SR

**Tel:** 01753 517359

**Email:** [office@groveacademy.co.uk](mailto:office@groveacademy.co.uk)

**Web:** [www.groveacademy.co.uk](http://www.groveacademy.co.uk)



**VISIT  
OUR  
WEBSITE**

