



Alumwell Infant School
Where we Learn, Grow and Achieve



Welcome to Alumwell School



On behalf of all the children, staff and Governors, I'd like to warmly welcome you to Alumwell Infant School, a school where children learn, grow and achieve.

Caring and friendly

Alumwell Infant School is a caring, friendly and supportive school, where all are encouraged to reach for and achieve their potential, leaving them well equipped for the next stage of their learning journey.

Nurture

We nurture our children, enabling them to grow and become confident, assured individuals... who celebrate their uniqueness, progress and achievement!

Igniting an interest in the world

Our teaching is stimulating and creative, and encourages our children to continue their education outside of school, and become lifelong learners. We want to ignite an interest in the world around them, and for that interest to lead to fulfilling and imaginative lives. Learning should be fun!

Pastoral care

Whilst academic achievements are an important part of life at our school, all our children have the opportunity to also enjoy a wide variety of sporting and musical opportunities, as well as regular trips and residential visits. Our pastoral care is exceptional, ensuring all children are kept safe and are supported both inside and outside school.

Dedicated staff

I am also very proud of our exceptionally experienced and dedicated staff, who ensure that all our children are well supported to achieve their true potential, and work hard with families to overcome any barriers to learning.

Parent partnership

Another very important part of our school is you, the parent! We value the link between school and parent and work very hard to involve you in every step of your child's time here. We hope that your association with us will bring both happiness and success for your child. We have an open-door policy and encourage parents to come in, as their input is always greatly valued.

Get in touch

If you wish to hear more about what we can offer your child please contact us for more information or an appointment to meet me. Telephone on 01922 720886 or email postbox@alumwell-i.walsall.sch.uk

Our mission statement



School Aims

- To create a positive attitude to learning with a curriculum that meets all children's needs academically, culturally, socially, morally and emotionally.
- To provide children with a safe, caring welcoming, environment in which children feel confident and secure.
- To create opportunities for raising children's standards of achievement and ensuring the best possible progress.
- To encourage children to become independent, responsible learners so that they are ready for the next stage in their learning.
- For children to be mutually respectful and tolerant of others and to develop and demonstrate skills and attitudes that will allow them to participate fully in and contribute positively to life in modern Britain.

School Ethos

Alumwell Infant School is a caring, friendly and supportive school where children are encouraged to confidently give their best. We set high expectations of children and our staff are committed to meeting the needs of every child. Our motto is "We learn, we grow, we achieve"

School Vision

Our vision is to create a school where every child achieves his/her potential through a relentless focus on high quality teaching and learning. Ensuring all children make good or better progress in reading, writing and numeracy will be one of our core purposes. All staff will consistently and energetically use the most effective methods for teaching these basic skills. High quality training, from leading experts in literacy and numeracy teaching, will equip them to do so.

Underpinning this will be:

- outstanding day-to-day assessment and marking of children's work.
- first-rate systems for tracking, identifying and celebrating children's progress.
- an exciting, relevant and inspiring curriculum.
- excellent support for the needs of each child.

Classrooms will be vibrant, supportive and welcoming. They will be full of children motivated by positive, well-paced and purposeful lessons. And these lessons will be delivered by staff that are passionate about the children's success. Every parent/carer will be able to feel proud of their child's/children's achievements- and will know exactly what these are. Clear guidance will be given about the best ways to support children with learning out of school. All of this will be done because the children and their education matter more than anything else. Every child will have the best possible start.

School day: settling in



School hours

The school day starts at 8.50am and ends at 3.15pm. Lunchtime is from 12.00 midday until 1.10pm.

Key Stage 1 children have a ten minute break in the morning and Reception children have additional opportunities for outdoor play.

Before-school club

There is a Before School Club every school day morning from 7.45am - 8.45am, where children can enjoy crafts/games/books.



Uniform

All children are expected to wear school uniform and full details can be found on our website. Please note that it is very important that all items of clothing are labelled clearly with your child's name. Without a name they all look the same!

School meals and snacks

We offer a wide range of delicious meals at lunchtime, including hot cooked options and a salad bar. Sample menus are available to view on our website.

Free school meals

All children are entitled to a free hot or cold meal.

Packed lunches

Your child may bring a packed lunch to school. Healthy options are encouraged. Please provide an appropriate container, clearly labelled with your child's name. Drinks should be in plastic or cardboard containers.

Drinks and snacks

All children are provided with fruit for morning break. All children in receipt of free school meals receive milk daily. Reception children are entitled to milk up to their 5th birthday, however there is often enough for them to have milk beyond this time. It can also be ordered and paid for from the canteen for lunchtime.

Children are provided with a bottle of water which will be filled daily.

Behaviour and self-development



Good manners

We ask your help in providing common standards between home and school. School rules are based upon good manners, thought for others and practical common sense. They are designed for the safety and welfare of all and make it easy for the children to know what is expected of them.

Rules

- Follow instructions first time.
- Keep your hands and feet to yourself.
- Show kindness and respect to everyone and everything.
- Listen to others and wait for your turn to speak.
- Walk in school to keep safe.

As a staff, we set a positive example and provide an atmosphere of praise and encouragement.

Children are encouraged to report incidents and not retaliate. Staff will listen and take appropriate action. Parents are informed if their child's behaviour is causing concern.

Bullying

We take bullying seriously. Bullying is the wilful, deliberate, conscious desire to repeatedly hurt, threaten or frighten someone and is unacceptable.

- We will never ignore suspected bullying.
- We will listen carefully to all accounts.
- Parents will be informed.
- Strategies will be developed to address the behaviour.
- We will follow up repeatedly, checking that bullying has not been resumed.
- We always encourage parents and children to report incidents or concerns straightaway.
- Bullying is addressed in our Personal, Social and Health Education curriculum.



Curriculum: explore, investigate and play



Early Years

Our Early Years Curriculum is topic-based, thematic and creative, and referenced to the Early Years Foundation Stage (EYFS). Our young children explore, investigate and play through both adult-initiated activities and those freely-chosen by the child.

Classroom

The classroom environments are set up so that children can move freely around clearly defined areas. This includes both indoors and outdoors for reading, writing, art, construction, imaginative play, science and mathematics. There is a balance between activities that the teacher chooses for your child, and opportunities for child-initiated learning in a structured environment.

Play

Play underpins all development and learning for our young children. Most children play spontaneously, although some may need adult support. It is through play that they develop intellectually, creatively, physically, socially and emotionally.



Key Stage 1

For children aged 5-7 the main topics of the curriculum are:

- English.
- Maths.
- Science.
- Computing.
- History
- Geography.
- Design technology.
- Music.
- Art.
- P.E.
- R.E.
- Personal, social, health and economic education.

Topics

Each topic will change shape according to the interests of the children and their teachers. Motivation is so important in learning and we try to harness enthusiasm when we inspire it. Staff ensure curriculum coverage by making adjustments across the year and through liaising with the year team below and above.



Facilities



Supporting learning

We are very fortunate to have some excellent facilities to benefit the children, and further support their learning and school experience, including a good amount of outdoor space for outdoor learning, recreational play and sports, and some excellent ICT provision.

Forest School

Forest School is the name for an approach to educate children in the outdoor environment on a regular basis. It best provides freedom to enjoy the natural world within a safe and secure environment.

Strengthen emotional, social, physical and intellectual development

We start our Forest School session by sitting in our fire circle and discussing the activities, and related safety

rules for the day. During our sessions children will have the opportunity to take part in activities that will teach them about caring for, managing and understanding the woodland environment. They will use hand tools such as bow saws, potato peelers and hand drill safety to make name cookies and frames as well as learning about cooking on an open fire.

We have a school garden, a sensory garden, a well equipped sensory room, a trim trail (we are also having outdoor gym equipment installed shortly).

After school clubs - multi skills, dance and gymnastics.

Enriched curriculum: trips and visits



Trips

To further enrich our curriculum, all children are offered a range of visits which are connected with work in the classroom. We make visits locally and further afield and invite visitors into school from the wider community.

Previous trips have included:

- Cosford, Sea Life Centre
- Cannock Chase Toy Museum
- Hollybush Garden Centre
- Walsall Arboretum
- Manor Hospital, seaside - Southport.

Visitors

We arrange visits to the school by theatre groups and those with professional expertise such as singers, artists and musicians etc. Recent visitors have included:

- NSPCC
- Jim Morris - arts Worker
- Quantum Theatre Group
- Ron Wood - Jolly Good Workshops
- Fire Brigade
- Pantomimes
- Puppeteers
- Educational workshops



Inclusion: a curriculum for all



Equal Opportunities

The school has a firm commitment to offering equal opportunities to all children in all areas of the curriculum, as well as extra-curricular activities. In addition, opportunities are provided for children to broaden their understanding of how individual differences enrich the community and to question stereotyped views and practices whenever they occur.



Special Educational Needs

On occasions some children may require additional support or the curriculum to be adapted. Staff will discuss any concerns with you at the earliest opportunity. Parents are encouraged to approach the school regarding any worries as it is essential for home and school to work together in order for children to make maximum progress.

Discussion

If we feel your child is in need of SEN support, we will discuss this with you. If we then find it may be necessary to request help from an outside agency in order to get your child extra support, we consult you and seek your permission. Parents are kept fully informed of progress, through learning reviews.

Access

To help parents, pupils and other visitors with disabilities get around our school we have a disabled toilet, ramps and wider doors. We also have an area designated as disabled parking.

More Able Children

All children are challenged to achieve their full potential. As well as providing extra challenges in learning activities we are always looking for opportunities to stimulate and inspire the children.

Your child's achievements



Assessment

We work closely with previous settings. They send us their latest assessments and learning journals, so that we can see where your child is and plan work relevant to their stage. However, some children can forget things they have learnt over the summer holiday and may need to relearn.



Next steps in children's learning

Assessments and observations of children's learning takes place throughout the year in all year groups. Teachers use ongoing assessments to plan next steps in children's learning. Formal national assessments take place in Y2. Pupils in Y1 and Y2 are assessed half termly in reading, writing and mathematics. Children in Reception are assessed termly in relation to Early Learning Goals. You will be informed of your child's progress regularly throughout the year.



School reports

There is an opportunity to meet with your child's teacher each term to discuss their progress and achievement. All parents receive an annual written report from the class teacher at the end of the summer term which provides information about your child's academic achievement and summarises their personal and social development.



Clubs

Wide range

Currently we are offering:
 • Breakfast Club • Multi-skills. • Dance. • Gymnastics... however we will shortly be asking the children which clubs they would like next academic year.



Sports and music

Sport and keeping fit

We aim to provide a sporting curriculum which encourages children to develop their skills, interests and a sense of personal achievement.

Sports Day

Infant children participate in an annual sports day. We offer after-school multi-sport skills and dance clubs as well as lunchtime opportunities. We have a fitness trail in addition to our Early Years adventure area.

P.E.

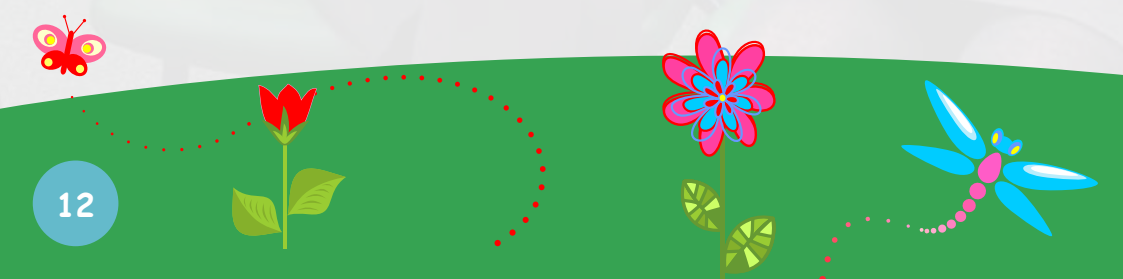
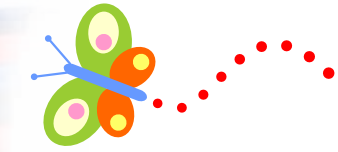
Gymnastics, outdoor and indoor games, dance and athletics are part of the P.E. programme.

Walk to school

We encourage all our pupils to walk to school. This is not only the healthiest option, but also the safest, as parking around the vicinity of the school can be congested and consequently hazardous.

Music

All children in Year 2 learn to play the recorder. All pupils play percussion instruments. Musicians work with the children as part of Creative Arts Week. Children have played a variety of drums and keyboards.





Admissions

Walsall MBC

Parents must apply to the Admissions Department at Walsall Children's Services. School staff will help any parents with their child's applications. Confirmation of places will be sent out in the early Summer term.

Children enter full time school in the September term after their fourth birthday. Parents who are considering sending their child to us are welcome to make an appointment to view the school.

Parent Support Adviser (Admissions & Pupil Place Planning)

If you have any questions about the primary admissions process and would like independent advice, please contact the Parent Support Adviser at Walsall MBC.

Contact us For Admissions and Pupil Place Planning:

Walsall MBC, 2nd Floor, Civic Centre, Darwall Street, Walsall WS1 1TP
Telephone 01922 652585
Email primary.admissions@walsall.gov.uk

Web: http://cms.walsall.gov.uk/index/education/school_admissions/primary_school_admissions.htm

Mid-year admissions

Parents need to apply to school. If there are no places available, names will be put on a waiting list. There is a new list at the beginning of each term.

Transfer to Alumwell Junior School

At the end of Year 2, after your child's seventh birthday, they may transfer to the Junior School next door. We have close links with the Junior School and children will make several visits prior to starting school at Alumwell Junior School. If you move house, please let us know your new address and if you move away inform us of your child's new school.



Getting involved



Voluntary helpers

Parents in School

We actively encourage parents to help in school. DBS checks have to be carried out before we are able to accept volunteers. Parents have helped with computer work, read to children, taught them to play games, and helped organise money raising activities. If you have any spare time we would welcome your help in school. Come and talk to us.

Governors

What are Governors?

Governors are like a Board of Directors who make policy decisions about how the school is run. They meet at least once each term. Governors have legal duties, powers and responsibilities.

Do you want to be a Governor?

Our Parent Governors give parents a voice in decision making. Vacancies are advertised as they arise with new Parent Governors being elected by parents through a ballot. If you are interested in becoming a Parent Governor, please contact the school.



Alumwell Infant School
Primley Avenue
Walsall
West Midlands
WS2 9UP

Telephone: 01922720886
Email: postbox@alumwell-i.walsall.sch.uk
Website: www.alumwell-i.walsall.sch.uk