



THORPE ACRE INFANT SCHOOL

WELCOME

"What more can I say. This school has helped my son bloom from a bud to a flower and I am so happy with the help that they have given to him. He has turned from a shy little boy to a cheeky monkey - in a good way! Best choice I made sending him to this lovely school."

Joanne Eveleigh and Douglas Hall and son Casey.



Foreword: Jane Fines, Headteacher

We are a small, friendly community of experienced staff and supportive Governors, and we welcome your family into our school.

It gives me great pleasure to introduce you and your child to Thorpe Acre Infant School – a place where everyone is 'reaching high, learning and growing together'. I hope that your child is really excited about joining us here... where so many wonderful learning opportunities and experiences are just waiting to happen!

School vision

The vision of Thorpe Acre Infant School is to provide an excellent early years education in a stimulating and supportive environment. We challenge all to cultivate a love for learning, to strive to fulfil their potential, and to be inspired to explore the wider world. We aim to develop a culture of inclusion in which all those connected with the school feel proud of their identity and able to participate fully in school life.

Family values

We have a small number of classes so I am fortunate in being able to get to know all the children as individuals, as do all the staff in our school. Children feel happy and develop self confidence in a nurturing environment which encourages positive relationships between children, staff and parents.

Learning journey

Our partnership with you, as parents, is a key factor in this success and we will work hard to involve you in every step of your child's learning journey through these important early years. We will show you how to support your child at home and celebrate achievement and progress together.

Come and meet us!

If you would like to find out more about Thorpe Acre Infant School, please do not hesitate to contact us. To make an appointment to visit, please contact the school office on 01509 212021. I will be delighted to show you around and answer any questions that you may have.



Contents

Pages 2 - 3

Welcome

Pages 4 - 7

Our school

Pages 8 - 9

Curriculum: a child's journey into play and learning

Pages 10 - 11

What will your child learn?

Pages 12 - 13

Clubs and Forest School

Page 15

Admissions

Page 16

Getting to school: how to find us



High teaching standards and unexpected opportunities - Melanie has found even more than she hoped for at Thorpe Acre Infant School

Melanie Hutchinson and her daughter Olivia, who is six, live in Thorpe Acre where Olivia attends Thorpe Acre Infant School.



'Amazed by how well she progressed'

"Even during her first term, Olivia was not only meeting her targets but exceeding them in some subjects, and I was amazed by how well she progressed. The teachers are extremely supportive and I can see it's not just Olivia who is doing so well; all her friends seem to be flourishing, too, and that is very reassuring."

Unexpected opportunities

"What I love are all the extras which Olivia can access, such as the after-school clubs... She has done a Multi Sport club and is now doing a 'Forest School' Outdoor Adventure club, which sometimes includes a camp fire with toasted marshmallows, which is a big hit! I think it's a fantastic opportunity for children to try something different they might not have the chance to experience otherwise."

First impressions

Having taken Olivia to the Pre-School Playgroup at Thorpe Acre and seen at first hand the friendly and happy environment, she had no hesitation in putting Olivia down for a place in the Foundation Year. "It seemed such a welcoming atmosphere, and as Olivia had enjoyed the playgroup so much I felt that it would be sensible for her to stay with the people and place she was already familiar with," says Melanie. "She had also seemed to learn a lot, even in a play setting, and I have since found that the emphasis on learning is of prime importance throughout the whole school."



OUR SCHOOL

The school is set in attractive, safe, landscaped grounds and each classroom has its own interactive whiteboard.

The school facilities also include:

- an ICT suite
- a large hall
- a resources room
- a medical room
- a playground
- ample grassed area
- a library situated on the bridge which links the two sides of the school

...and the site is fenced for the security of the pupils.

Classes

- Early Years Foundation Stage (Reception) aged 4-5 years
- Year 1 aged 5-6 years
- Year 2 aged 6-7 years



Uniform

School uniform consists of:

- red sweatshirt, fleece or cardigan, with or without logo
- red or white polo shirt, with or without logo
- grey trousers, skirt or pinafore (no jeans)
- red book bag.

In warmer weather:

- grey shorts
- red summer dress.

Footwear:

- dark flat shoes (no heels)
- dark trainers
- dark flat boots
- if laces are worn, children should be able to tie them independently.

PE kit:

- white or red plain T shirt (no vests or strappy tops)
- dark shorts (preferably black and not baggy)
- black plimsolls
- drawstring PE bag with name on front
- hair should be tied back for PE. Earrings must be removed
- Concessions will be made for medical or religious reasons



"I attended this school as a little girl 27 years ago. Now my daughter has just as much fun learning here as I did."
Kelly Appleby and daughter Shelise.



OUR SCHOOL

"We couldn't have wished for a better school. She really enjoys being here."
John and Tina Brinkworth and daughter Kyla.

Arrival

Bell rung on playground for lining up **8.45** am
Morning sessions 8.55 am - 12 noon
Afternoon sessions 1.10 pm - 3.15 pm

Snack

A healthy snack is available from the kitchen at break time for a small cost. Snacks are freshly made every morning.
Healthy snacks may be brought from home if parents prefer. Reception children have snacks and milk provided in their classroom.

Water

All children are provided with a water bottle which is kept in school and washed and refilled regularly. Children are encouraged to drink water throughout the day – essential for everything from physical growth to learning and concentration.

Lunch time

A midday meal is cooked on the premises. Each day the children have a choice of hot meals or a salad, then a choice for their second course. Menus are displayed in the school for parents and pupils to see.

Packed lunch

If a child does not take a school meal, parents can provide healthy packed lunches in a named lunchbox. The school nurse will provide advice and support on 'Healthy Lunchboxes'.

Moving to Junior School

Most children transfer at the end of Year 2 to the adjacent Thorpe Acre Junior School. Both schools believe close liaison, co-operation and smooth transfer are essential in order to maintain children's progress and development.

Behaviour

We believe high levels of achievement and progress is most likely to be achieved by children when there are high standards of behaviour. A staged approach to behaviour management has been drawn up. This is shared with all staff and children.



"It has done wonders for our children": Hannah and Shaun have been impressed with the all-round support Thorpe Acre Infant School has given their family

Hannah and Shaun Murphy live in Loughborough with their four children. Ryan is eight, Evelyn seven, George five and Lillian is two years old.



Welcoming

Finding the right school for your child can be a daunting task but Hannah and Shaun believe they were particularly fortunate that they happened to live in the catchment area for Thorpe Acre Infant School. Hannah says: "... we were struck by how welcoming everyone was, how clean, bright and tidy it appeared and how well everything seemed to be organised. Our first impressions have been more than justified - it has done wonders for our children."

"Going way beyond the call of duty"

"Thorpe Acre Infant School has been such an asset to us, going way beyond the call of duty."



CURRICULUM: A CHILD'S JOURNEY INTO PLAY AND LEARNING

Pupils are provided with an Early Years Foundation Stage Curriculum in their first year, which will help them learn through playing and exploring. Their journey into learning leads into Key Stage I, which begins in Year 1, and lasts until the end of Year 2.

The Early Years Foundation Stage

Your child will be learning skills, acquiring new knowledge and demonstrating their understanding through 7 areas of learning and development. Children should mostly develop the **3 prime areas** first. These are

- Communication and language
- Physical development
- Personal, social and emotional development

As children grow, the prime areas will help them to develop skills in **4 specific areas**. These are

- Literacy
- Mathematics
- Understanding the World
- Expressive Arts and Design

The curriculum is designed to be flexible so that staff can follow your child's unique needs and interests when planning activities. Children in the EYFS learn by playing and exploring, being active and through creative and critical thinking which takes place both indoors and outside



Key Stage I

Easing the journey from Foundation Stage to Key Stage I

At Thorpe Acre Infant School, we have matched National Curriculum subjects to the seven areas of learning of the Foundation Stage. We believe this will aid continuity from the Foundation Stage to Key Stage I, enabling us to provide a more integrated learning journey for the children.

Seven areas of learning in the Foundation Stage National Curriculum

Communication and language	- Speaking, listening and drama
Physical development	- PE, gross and fine motor skills including handwriting
Personal, social and emotional development	- PHSE and Citizenship - Religious Education
Literacy	- Reading and writing
Mathematics	- Mathematics
Understanding the World	- History - Geography - Science
Expressive Arts and Design	- Art - Music - Design Technology

Information and Communication technology is taught as a separate subject but also permeates the other subjects as a learning and teaching tool.

Homework

Children will bring home books and activities to develop skills and competence in reading. They will also have a home-links book, or learning log, in which to complete a variety of activities. These include information and sometimes guidance to help parents/carers and teachers work together to maximise children's progress.



"All three children have attended Thorpe Acre Infants and have thoroughly enjoyed their time here. They have come on leaps and bounds. Lots of time and energy is put into the childrens' learning."
Emma Clarkson and daughter Sienna.

Joanne and Matthew's hopes and expectations were greatly exceeded after their son was offered a place at Thorpe Acre Infant School

Matthew and Joanne Pullen live in Loughborough with their sons Jack, five and Luke, three.



They got him and some of the other children to help make and paint model of Thomas so they were all doing something they enjoyed together; a clever and thoughtful way of creating friendships."

Personal touch

"I really like the personal approach and the fact that they treat each child according to his or her own strengths; at one Parent's Evening, I was very touched that Jack's teacher obviously had an insight into what makes him tick and that he was seen as a valued member of his class."

Jack had been quite shy amongst people he didn't know well, so Matthew and Joanne were understandably worried that he might feel out of place at a school where he knew no-one at all.

Settling in with new friends

Joanne says: "What particularly impressed us was that the teachers were not only understanding of Jack's feelings but were willing to do what they could to encourage him to make friends and to fit in with the others. They came up with ideas to help him integrate, such as focussing on his love of Thomas the Tank Engine.



WHAT WILL YOUR CHILD LEARN?

Literacy: we will help your child to:

- develop in all aspects of speaking, listening, reading, writing, spelling, and understanding drama
- have high standards in both spoken and written work
- love literature and use the library as a source of information and entertainment.

Mathematics: we will help your child to:

- develop basic mathematical concepts and skills
- enjoy working with numbers and see how it is useful in life
- enjoy and understand measuring, shopping, counting, sorting, grouping, classifying, weighing and solving problems.

Science: we will help your child to:

- undertake practical activities like making simple circuits or toys, planting or growing
- observe and enquire about the world
- use science experiences as opportunities to plan, predict, compare, hypothesise, record and reflect.

Computing: **we will help your child to:**

- use information and communication technology in all lessons (computers are in all classes) and learn how it can be useful in everyday life
- use word-processing, graphics and data handling
- use interactive whiteboards in classrooms to enhance learning and teaching.

Religious Education (RE): we will help your child to:

- understand the beliefs and values (both religious and secular) of the various religious groups and cultures within our society
- value and care for each other and to take appropriate responsibilities for their own behaviour.



Physical Education: we will help your child to:

- exercise using a wide variety of large and small apparatus
- enjoy playing outdoor and indoor games, moving and dancing to music, and undertake drama and skills training.
- Thorpe Acre Infant School was re-awarded the Sports Activemark in 2008 as a result of its dedication to the provision of quality sports/physical education.

Other Curriculum Areas:

Art, Design Technology, History, Geography and Music are foundation subjects. We do include them all when planning our topics, delivering the curriculum and assessing children's progress and development.



A new life in a new country has been made easier for Malek and Rola's children because of the right support from Thorpe Acre Infant School

Malek and his wife, Rola, live in Loughborough with their children Zaid, six, Ahmad, four and baby Amir, who is nearly one.



supportive and willing to make a special effort to make the boys feel at home. I was amazed at how quickly Zaid and Ahmad started to pick up the language and that has made sure they are able to keep up with their peers, to make friends and to enjoy going to school."

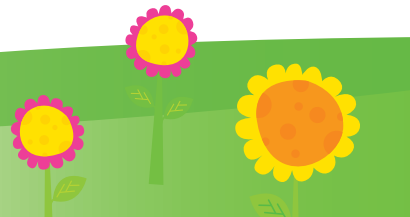
Emphasis on learning and behaviour

Having looked around at all the possibilities, Malek and Rola chose Thorpe Acre partly on recommendation from friends and partly because they immediately liked what they could see for themselves. As a teacher herself as well as a parent, Rola knew exactly what she was looking for: "There are two things which are especially important to me and those are academic achievement and standards of behaviour and Thorpe Acre places a great deal of emphasis on both. Discipline is something I feel very strongly about and when it's well-applied it ensures the effective learning environment that the school obviously provides. The standards of reading are particularly high and Zaid and Ahmad have been well supported by their teachers."

Language challenge

When Malek and Rola moved to the UK at the end of 2012 Zaid and Ahmad spoke only Arabic and Swedish and as they were about to start at a new school, naturally their parents were concerned about how they would manage. A few months on, they could not be happier with how well their children have not only settled in well but are thriving at Thorpe Acre Infant School.

"I was quite scared at first," says Rola. "Everything was so new to them - new house, new country, new language - but it was clear that the teachers were very



CLUBS AND FOREST SCHOOL



Lunchtime and After School Clubs

There are a great variety of clubs available for the children to join throughout the year. Details are sent out at the beginning of each term. Options often include:

- cookery
- construction
- football
- gardening
- cross country
- tag rugby
- tennis
- multi sports
- Forest Schools Outdoor Adventures
- Arts and Crafts Club
- Computer Club
- Singing Club and Dance Club.



Forest School

Forest School is about embracing the outside world and encouraging children to get out there and enjoy it! Children can enjoy the following activities in our Forest School, based in our school grounds:

- meet and greet each other with 'Chickaboo' - the Forest Schools mascot
- boundary games to show children not to enter the circle without an adult
- instructions and modelling on using the equipment
- set challenges for the session
- cook every week on the bonfire
- make a bug hotel
- build a den
- hammer nails into logs
- make dream catchers
- strip the bark off twigs and logs
- sledge in the snow
- meet and eat around the fire circle



"Abbie loves coming to school and has learnt a lot since being here. The teachers are all kind and caring and have pushed Abbie to get the best out of her."
Laura and Lee Yates and daughter Abbie.



INCLUSION

More Able Children

All children have talents and at Thorpe Acre Infant School we want to develop them as fully as possible. We acknowledge the needs of more able, talented and gifted children. We aim to identify able and gifted children and to provide regular, stimulating activities appropriate for their needs.



Special Needs

We are committed to providing high quality provision and support for pupils who have special needs of any kind. We aim to remove barriers to learning and participation and to meet the needs of all learners through an inclusive and appropriate curriculum. The school has a Single Equality Plan, which includes Race Equality, Gender Equality and Disability Equality.



Theresa and Steven have appreciated the way that Thorpe Acre Infant School has effectively and sensitively addressed their son's particular needs

Theresa and Steven Ball live in Loughborough with their children Olivia, twelve and Owen, seven. Owen has recently been diagnosed with dyspraxia which means he has difficulty with co-ordination, affecting his mobility and his ability to write clearly.



Enjoys school

"He genuinely enjoys school, is doing well and has lots of friends and I have no reason to believe that he would get better support elsewhere."

"Very impressed"

"I am very impressed with what the school has done for both my children, but especially with how they have been happy to make sure that someone like Owen, who has additional needs, is given just as many opportunities as everyone else."

"Increased his self-esteem"

Theresa say: "All the teachers treat each child as a person in their own right and address any issues appropriately and sensitively. All the children are made to feel special, whatever their capabilities, and are encouraged to do their best, and this approach has certainly given Owen more confidence in himself and increased his self-esteem, which is so important."



ADMISSIONS

The school admits all four year olds at the beginning of the academic year (August to August) in which they reach their fifth birthday.

Look around the school

Parents who are thinking of applying for a place at Thorpe Acre Infant School are invited to visit, to look around and to have their questions answered.

Getting used to school

Prior to admission, parents and children are invited to spend time in school. We hope that parents will always feel welcome, be informed about, and involved in, the curriculum throughout their child's time with us.

Leicestershire County Council

We adhere to Leicestershire County Council's policies and arrangements for admissions. For further information please visit <http://www.leics.gov.uk/admissions>

Ofsted says:

The School was inspected by OFSTED in February 2012. "This is a good school. Pupils make good progress and achieve well. Good leadership, management and teamwork, on the part of all staff and Governors, are ensuring good and sustained improvement. The school's overall effectiveness was judged as 'good', and the following key judgements were also judged good:

- achievement of pupils
- quality of teaching
- behaviour and safety
- leadership and management."



YOUR QUESTIONS ANSWERED

Is my child safe in school?

The staff and Governors of this school recognise their responsibility for the health, safety and welfare of the children in their care. Parents are asked to provide an emergency contact telephone number when their child is admitted to school.

How will the school communicate with me?

We are always pleased to meet with parents/carers to talk about children's progress or any difficulties. Please make an appointment with staff.

Twice a year, usually in the autumn and spring terms, there is a formal invitation to parents to discuss their child's progress individually with the class teacher at parents' evening. And every child receives an annual written report at the end of the Summer Term. A half termly newsletter is also sent out, and there is a parents and carers' noticeboard alongside the playground gate.

What if I'm late dropping off my child?

If you have to bring your child to school after 8.55am or return them to school (e.g. after a dental appointment), please bring them through the front door to the office, to be signed in.

What if I need to collect my child early?

If a parent needs to withdraw their child from school during school hours, the school needs to be informed in advance by telephone, personal call or note. School policy is that children will only be released to parents/carers or their authorised representative.

What if my child is ill?

Please inform school by phone as soon as possible on the first day of your child's absence stating the reasons for the absence.

What if I have a complaint?

If a member of the school community has a concern or complaint about an aspect of life at the school, please talk with the Headteacher at your earliest convenience. Your concern will be dealt as sensitively and effectively as possible. It is to be hoped that most concerns will be settled amicably at this 'informal' stage. However, if there is a continuing concern, this can be directed through the 'formal stages' as outlined in the school's complaints procedure. Details of the policy/procedure can be obtained via the school office.

Safeguarding

Everyone at Thorpe Acre Infants is committed to keeping children safe. We have a Safeguarding/Child Protection Policy which is reviewed annually. Staff follow established guidelines for safeguarding children and young people at all times. The school operates safer recruitment procedures and makes sure that all appropriate checks are carried out on staff and volunteers who work with children. The Headteacher and Deputy Headteacher are the school's Designated Senior Persons for Child Protection (DSP) and their training is refreshed every two years. All staff attend Child Protection training every three years. Our Chair of Governors is the nominated governor responsible for Child Protection.



GETTING INVOLVED

The Governing Body

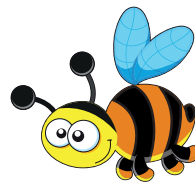
There is a full Governing Body with 12 members made up of Headteacher; two staff Governors (one teacher plus a non-teaching member of staff), four parent Governors, two community Governors and three LA Governors.

If you would like to be a School Governor please contact the school office.

Friends of Thorpe Acre Infant School

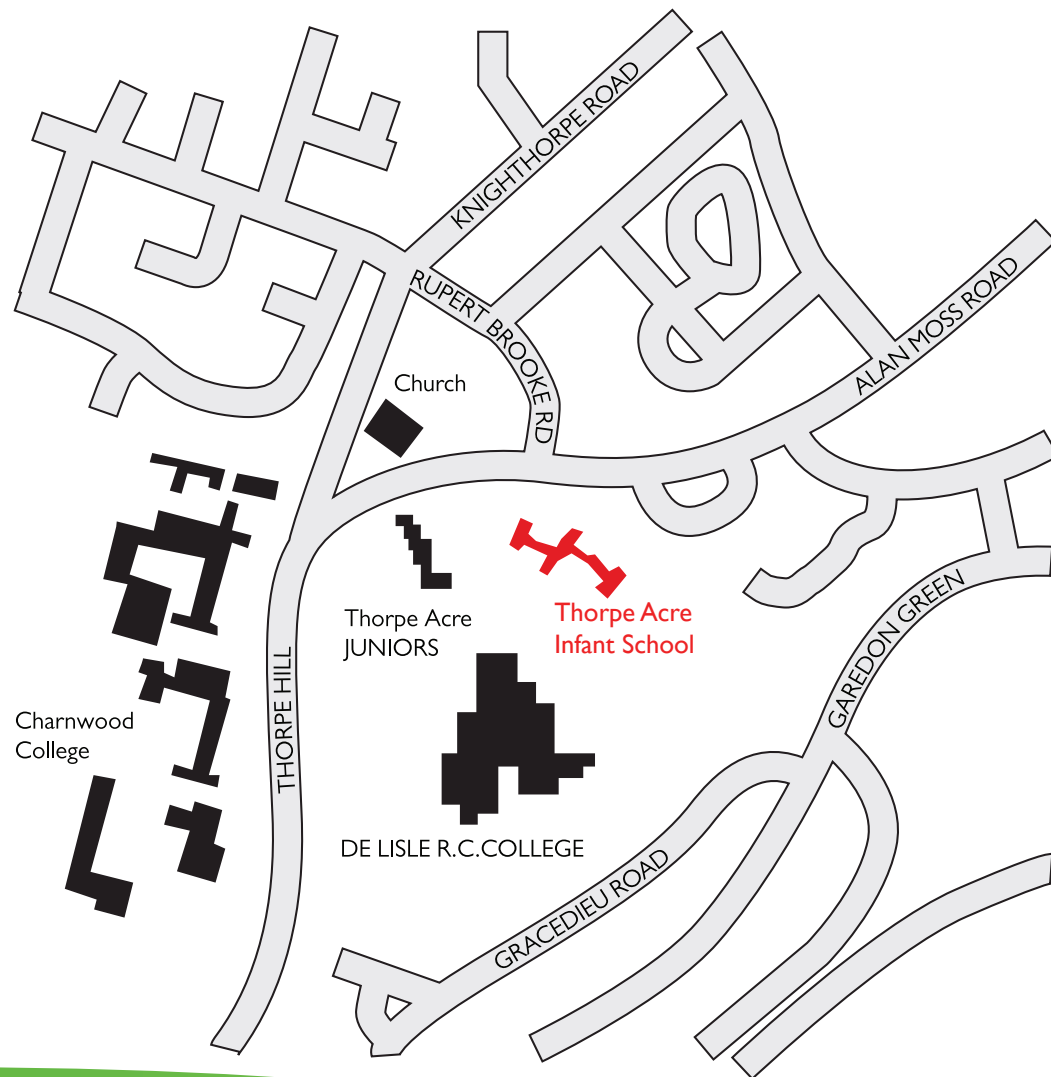
Friends of Thorpe Acre Infant School are a small, friendly group of parents and friends of the school, who meet every few weeks in the school staff room to discuss fund-raising and social events. Hannah Murphy is a member and says: "We run a Cake Stall, sell second-hand uniform and organise discos and a Christmas Fair, and it all helps the school to provide the extras which so benefit the children."

If you would like to be a member of Friends of Thorpe Acre Infant School, please contact the school office.



GETTING TO SCHOOL:

how to find us



Thorpe Acre Infant School
Alan Moss Road
Loughborough
Leicestershire
LE11 4SQ
Telephone/Fax: 01509 212021

E-Mail: ict.admin@thorpeacre-inf.leics.sch.uk
Headteacher: Mrs Jane Fines

