

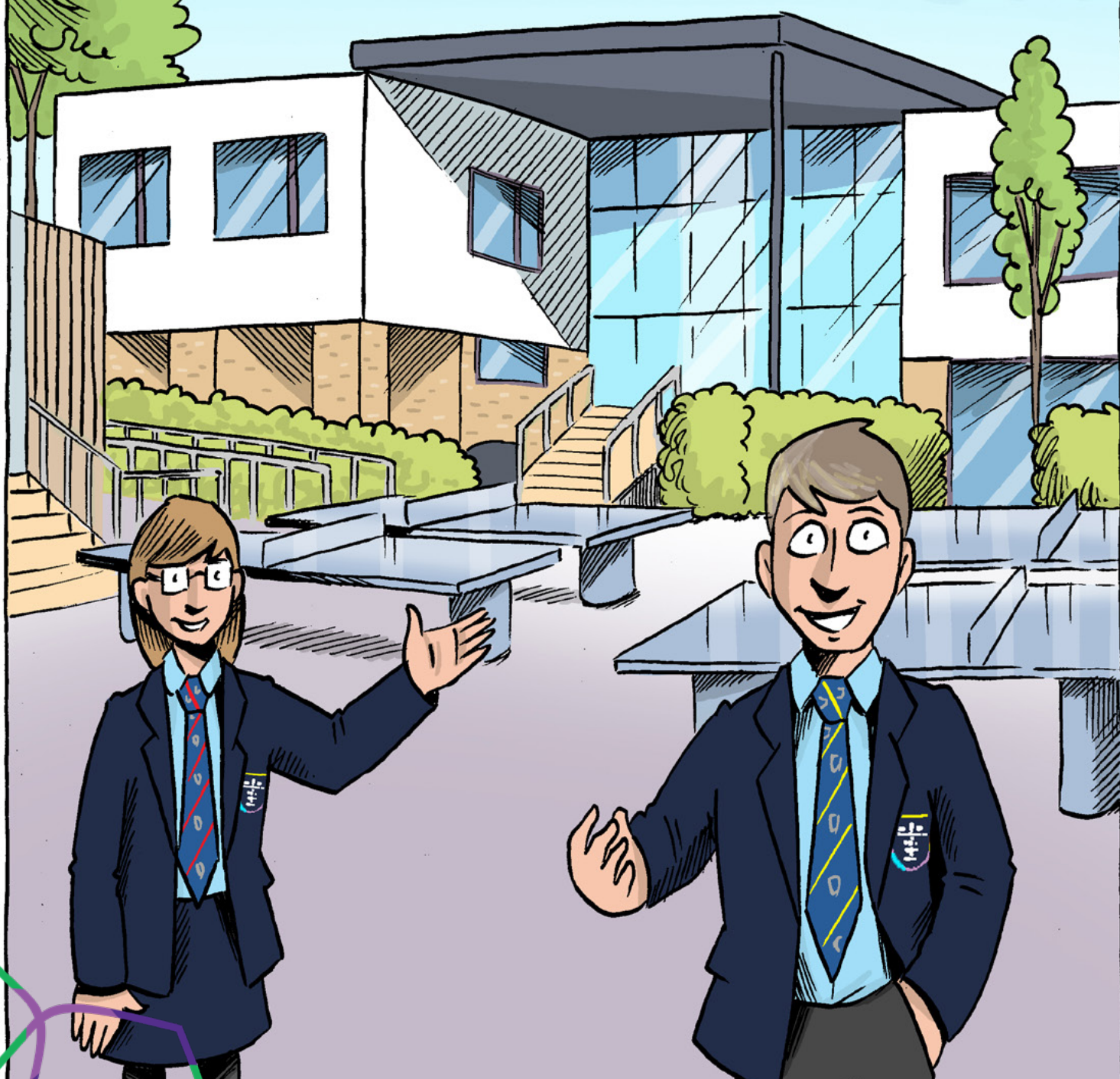


# Bluecoat Wollaton

believe in yourself, in others, in God

This is your guide to joining Bluecoat Wollaton Academy.  
Inside, you will find all the information you need for settling in  
happily and confidently when you join our fantastic school.

**Believe in yourself, in other, in God.**



FAITH LOVE HOPE



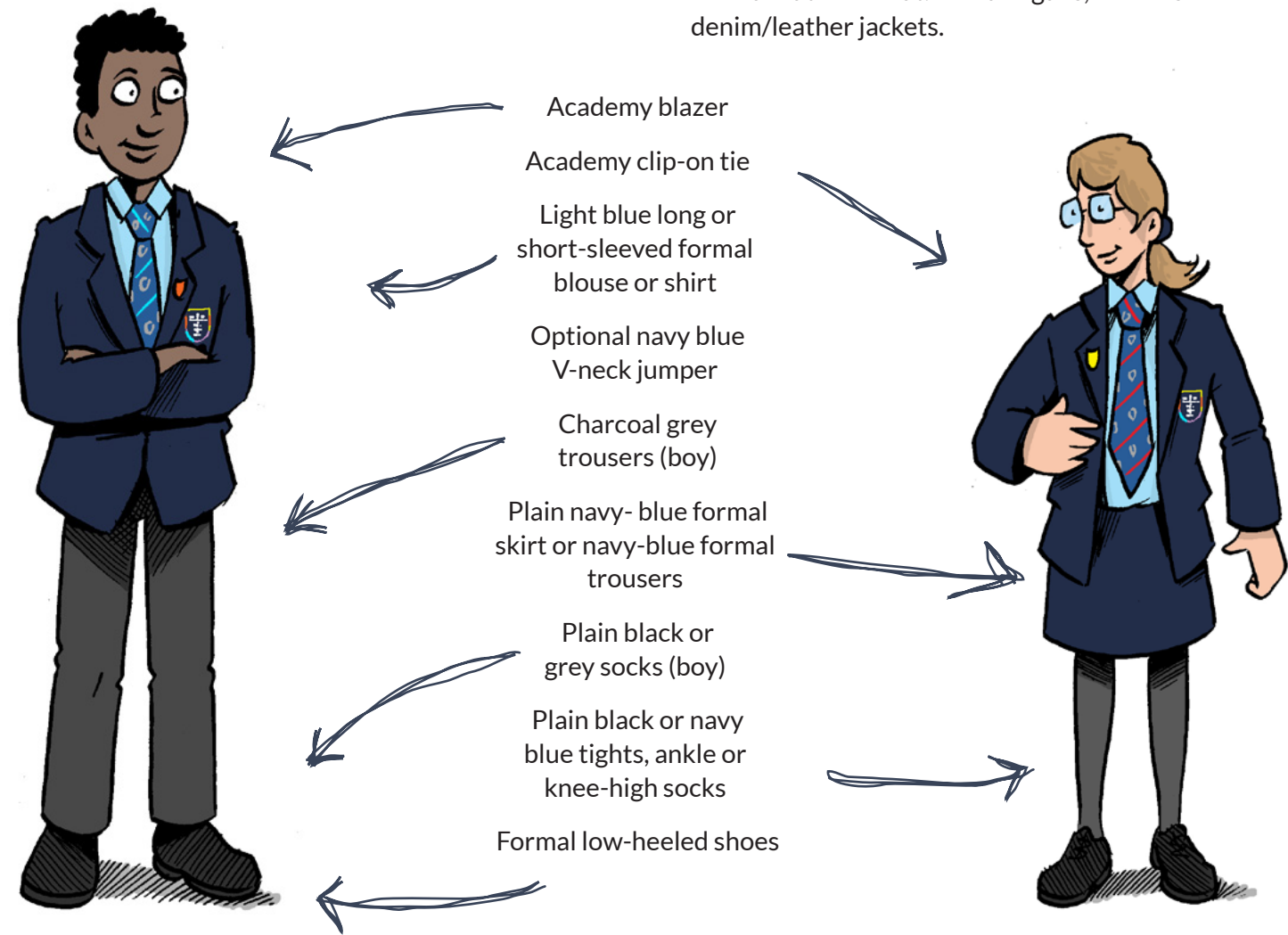
# What will I need for my **first day**?

## Uniform

We are very proud of our brilliant school and want all students to wear their uniform with pride.

Additional uniform information:

- Hair accessories should be plain black or navy blue
- Hair styles should be natural colour- not be excessively long, dyed or multi-coloured. No shaved lines, patterns or wedges.
- No make up, jewellery, body piercings including clear studs, nail polish, false/acrylic nails.
- No smart watches
- Formal outdoor coat. No cardigans, hoodies or denim/leather jackets.



## Equipment

You must bring a pencil case every day with a minimum of your 5-a-day: pen, pencil, ruler, rubber and scientific calculator. It is also useful to include: a whiteboard pen, green pen, highlighters, pencil sharpener, glue stick, geometry set. Pack your Bluecoat Wollaton bag the night before and ensure you have all the following inside:

- Pencil case
- Subject exercise books
- Tissues
- Knowledge organiser
- PE kit (on PE days)
- Water bottle (this can be filled up at the water fountains)

Please note, mobile phones are not to be used on the school site.

# What does a **school day** look like?

The school day runs from 8:25-15:00.  
Arrive no later than 8:20.

8:25 - 8:55	Tutor time
9:00 - 10:00	Period 1
10:00 - 11:00	Period 2
11:00 - 11:15	Break
11:20 - 12:20	Period 3
12:20 - 13:00	Lunch
13:00 - 14:00	Period 4
14:00 - 15:00	Period 5

There will be a school bell at the end of each lesson. At this point you should move, with your bag and coat, quickly to your next lesson.

Toilet breaks can be taken at break time and lunch time, not during lesson time.

## Lunch time

You may bring your own packed lunch to school or purchase lunch from the canteen. We have a variety of hot and cold food including sandwiches. You will be given a card which you top up with money either via **weduc** or using the machines at school. You can only purchase food with this school card so you must have it with you every day.

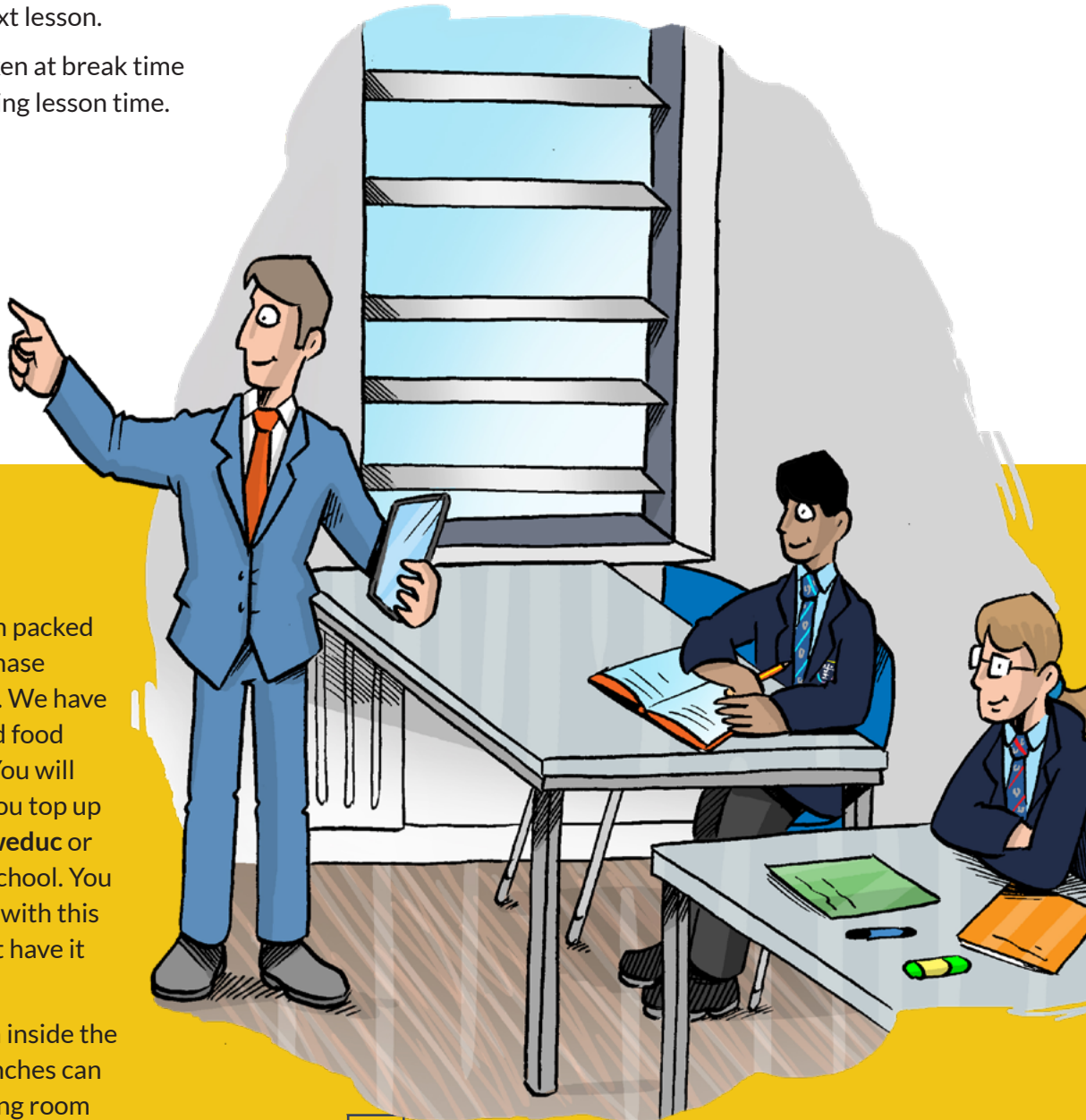
Hot food must be eaten inside the dining room. Packed lunches can be eaten inside the dining room or outside under the canopy.

## Tutor time

The activities during tutor time change daily and will include:

- RSHE
- Reading
- Believe time
- Family form
- Act of Worship

You will see your form tutor every day so you will get to know them very well. They will check your equipment daily and give you an opportunity to talk about any concerns or anxieties each morning.





# What will I study?

## Lessons

You will study a wide range of lessons in year 7, including:

- Art
- Drama
- English
- Geography
- History
- Mathematics
- Music
- Physical Education
- Religious studies
- Science
- Spanish
- Technology

## Homework

Homework is to be completed daily and can be found in your Knowledge Organiser booklet. Each night you will have 2 subjects/ tasks to complete (indicated on the calendar in your KO). This should be completed in your KO exercise book and should take approximately 1 hour. Your Knowledge organiser is checked weekly with rewards and sanctions given accordingly.

You will also be set Maths (Sparx), English (Bedrock) and Science (Seneca) online homework each week to help consolidate the learning that has taken place in these core subjects.

It is also important you have a good balance of other activities outside of school, so plan your time for homework around these commitments.

You can get help with your homework at different lunchtime/ afterschool clubs.

## Progress

We will regularly check your attitude and progress across the different subjects and record this on Go4Schools for parents/carers to see. There will be opportunity to discuss this at the Progress Review Evening during the year.



# What is expected of me?

We have exceptionally high standards of behaviour at Bluecoat Wollaton to allow all students the perfect environment to make the best progress. This includes:

- Attending school
- Being punctual
- Wearing the correct uniform
- Being polite and respectful
- Seeking opportunities to experience new things and build your character
- Not tolerating unkindness or bullying - always report this
- SHINE when you are asked to by the teacher

At the beginning and during lessons you will:

1. Line up outside the classroom silently, checking your uniform.
2. Enter the classroom in silence and greet the teacher.
3. Take out your 5-a-day, KO and exercise book; wait for the teacher to invite you to sit down.
4. Complete the retrieval activity independently in silence.
5. Listen to teacher explanations, modelling, and instructions.
6. Participate in every part of your lesson. There will be lots of questions and activities for you to practise and embed your learning.
7. Show your Mini-Whiteboard when instructed by the teacher.
8. Show respect by not talking when the teacher is talking or when other students are asking/answering questions.
9. Not distract other students from their learning.
10. Raise your hand if you need to ask a question.
11. Work independently when instructed by your teacher to secure the knowledge you have just been taught.
12. Challenge yourself and not be afraid to try, even if you make mistakes to begin with.
13. At the end of the lesson, pack away and stand behind your chair ready for your teacher to dismiss you.



## SHINE

We use SHINE when we want your attention. This may be used at multiple points throughout the lesson. There are posters in every classroom to remind you of the 5 steps. It is vitally important you are following these to maximise learning time. Warnings will be issued if you do not respond immediately to SHINE.





# What if I need help?

We have an effective pastoral system at Bluecoat Wollaton with a supportive team of staff who are on hand to make your school experience enjoyable and successful.

Your Head of Year will be Mr Dyer.

You will be placed into one of eight different houses:

Braithwaite - blue Fenton - Green

Harrison - Orange Inglis - Purple

Mellors - Yellow Rippon - White

Thorpe - Red Willoughby - Pink

This will be your tutor group for the 5 years at school. For example, 7WT means you are in Year 7 at Bluecoat Wollaton in the house Thorpe.



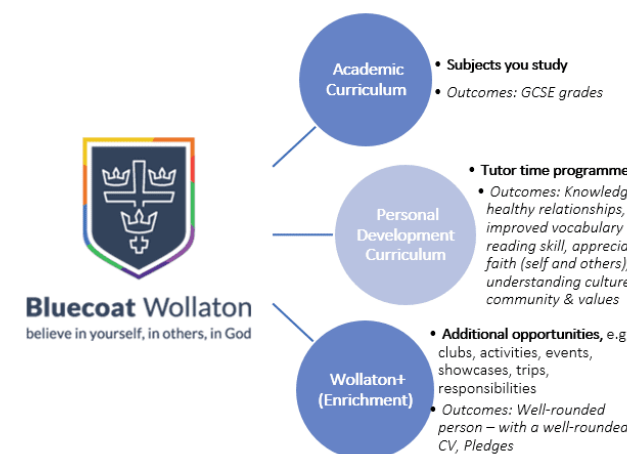
# What about personal development?

## Where will your journey lead?

At Bluecoat Wollaton Academy, our mission is to develop you into an extraordinary, well-qualified and well-rounded young person who will transform your own life and the lives of others around you.

To achieve this mission, you need to take an active role in your journey at Bluecoat Wollaton. **Everyone** will have access to these opportunities, BUT how you **engage** with them will determine how amazing your **outcomes** are.

You will have access to an exceptional academic curriculum, a broad and reflective personal development curriculum (with such topics as Relationships, sex and health education, Careers, Believe time, Reading to name a few) AND you have opportunity to take on additional opportunities as part of the Wollaton+ offer. These include: clubs, activities, trips, leadership opportunities and more.



A new part of Wollaton + is our Pledges programme, where you have the opportunity to become the best version of yourself, by getting involved in a range of activities/opportunities and growing in confidence and experience. Our pledges are chosen to reflect our school mantra of 'Faith', 'Hope' and 'Love'. You can see these pledges below.

FAITH	HOPE	LOVE
<b>Pledge 1:</b> Have ambition to succeed	<b>Pledge 4:</b> Have confidence to represent our Academy in the community.	<b>Pledge 7:</b> Be open-minded and experience a range of activities
<b>Pledge 2:</b> Have the courage to embrace adventure	<b>Pledge 5:</b> Be resilient and envision your future with ambition	<b>Pledge 8:</b> Invest in our community through kindness and support
<b>Pledge 3:</b> Explore and celebrate faith, culture and diversity	<b>Pledge 6:</b> Become an accomplished leader of tomorrow	<b>Pledge 9:</b> Be accountable for our impact on the world
<small>We build faith in ourselves, our communities and culture.</small>	<small>We model hope for our community, our future and what we can become.</small>	<small>We demonstrate a love for life, others and our planet.</small>

Around the school you will be able to spot our display boards. These boards give a range of ideas for how you can achieve each pledge. Or you can visit the 'Pledges' tab on the school website.

We work towards our pledges from the start of our journey in Year 7, and aim to have completed each of our pledges at a 'participate' level by the end of Year 8. (Perhaps you will be one of our amazing students who will complete them sooner?) Once all pledges are complete at this level, you then build on each by engaging at a more committed level over the remaining academic years; becoming a contributor, organiser or leader in any (or all!) of the pledges.

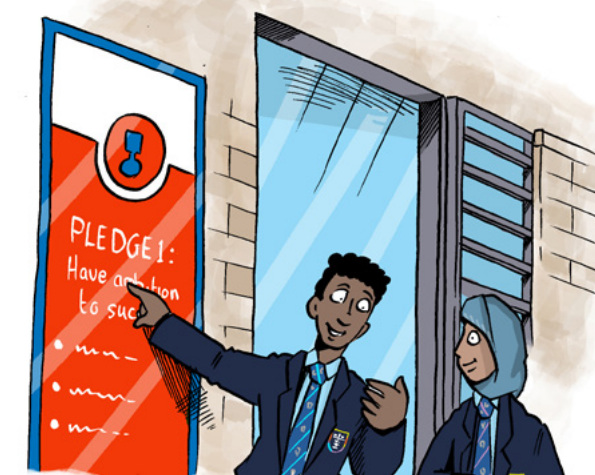
**Every student can choose how they want to work towards, or achieve their pledges – the journey you take will be led by your interests and your choices.**

Your pledges are typically based on engaging in academy life at Bluecoat Wollaton. However, for those students that engage in amazing activities or clubs in evenings or weekends, we still have ways of capturing all your amazing actions through our online tool on **unifrog**.

The development of your character and your engagement in Wollaton+ opportunities, tracked with your pledges, is just as important to us as your academic achievement. So, at every Progress Review Event, your Parents/Carers will get a report to showcase how well you are engaging in these aspects of life at Bluecoat Wollaton, alongside your subject reports.

By the time you reach Year 11, you will have collated an amazing CV packed with incredible activities, challenges, adventures and skills to showcase the full spectrum of YOU, alongside some amazing qualifications.

We are excited to get to know you and find out where your journey will lead...



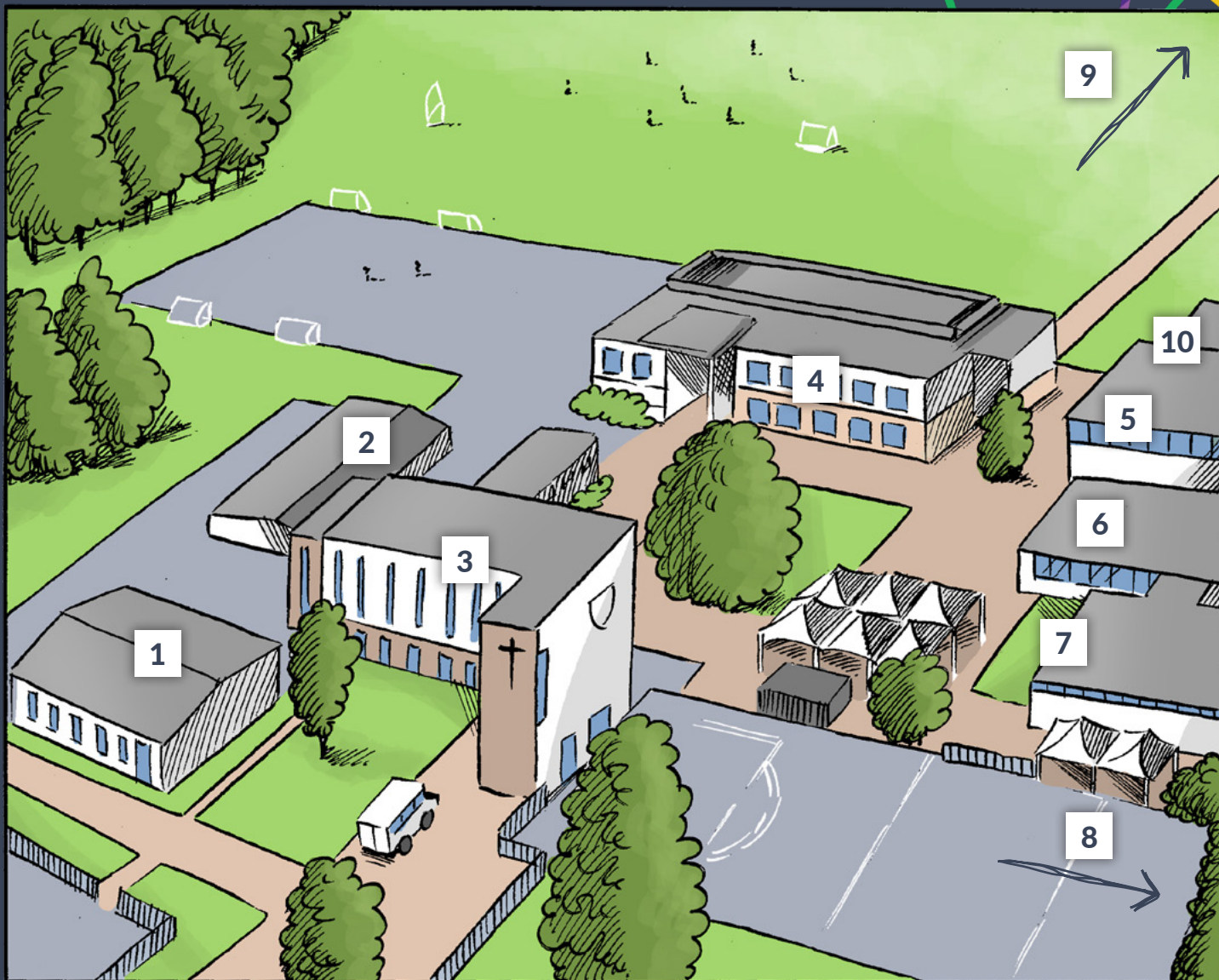
## Rewards

We are constantly finding opportunities to reward students for their hard work. You can receive positive points in lessons for a variety of different reasons, such as; verbal contributions, presentation, hard work, being helpful etc.

Your positive points will contribute to different rewards events throughout the year such as; non-uniform days, early lunches, sweet treats and the epic Bluecoat Wollaton Summer Festival.



# MAP



- |   |                          |    |  |
|---|--------------------------|----|--|
| 1 | Gym                      | 6  | Design & Technology/Art                  |
| 2 | Great Room               | 7  | Music                                    |
| 3 | Main Building /Reception | 8  | Sutton Passeys Crescent student entrance |
| 4 | Main Building            | 9  | Harrow Road entrance                     |
| 5 | Science Block            | 10 | New Classrooms                           |



## Bluecoat Wollaton

believe in yourself, in others, in God

**Bluecoat Wollaton Academy**

Sutton Passeys Crescent, Wollaton Park, Nottingham, NG8 1EA

**Tel:** 0115 900 7210

**E-mail:** [office@bluecoatwollaton.co.uk](mailto:office@bluecoatwollaton.co.uk)

**Website:** [www.bluecoatwollaton.co.uk](http://www.bluecoatwollaton.co.uk)

Devised and produced by Stoneworks Education Ltd [www.stoneworkseducation.co.uk](http://www.stoneworkseducation.co.uk)

© Stoneworks Education Limited 2014-2024. All rights reserved.