



LAWN MANOR  
ACADEMY

# Your Pocket Guide to Starting at Lawn Manor Academy

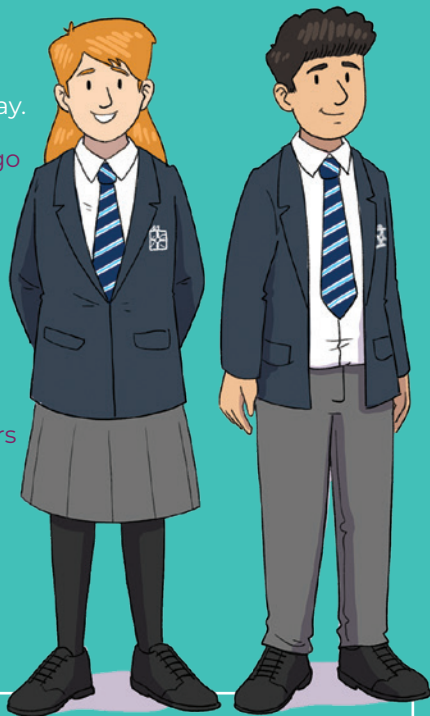
Inspiring and Creating Futures for All



# What will I need for my first day?

We have high standards for presentation at Lawn Manor Academy, so you should wear the correct uniform from your first day.

- School blazer with logo
- Lawn Manor Academy tie
- V-neck navy school jumper or cardigan (optional)
- White traditional school shirt
- Plain mid-grey trousers or skirt
- Plain black socks, or tights in black or a natural colour
- Plain black shoes, or trainers with leather uppers



## PE kit

For PE, you will need a grey/teal T-shirt, shorts, socks, hooded jumper, and trainers. We also recommend plain black jogging bottoms to wear over your shorts in colder weather, studded football boots, mouth guard, shin pads, hat, gloves, and sunscreen.

## Equipment

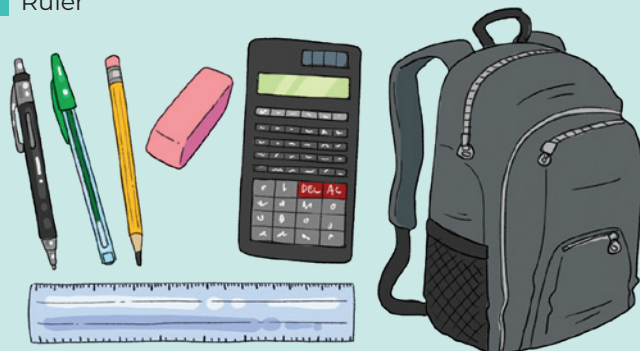
You will need a school bag to carry your books and equipment and a bag for your PE kit.

Every day you must bring the following:

- Pen
- Pencil
- Rubber
- Ruler

- Green pen
- A scientific calculator (can be bought from Student Services)
- Pencil case (also available at Student Services)

Your filled pencil case must be on your desk in all lessons. You should bring your PE kit and Accelerated Reader books when needed.



## Mobile phones

Phones must not be used, seen, or heard on the school site. You must switch off your mobile phone and keep it in your bag in school if you decided to bring it to school

## Top Tip

Pack your bag the night before and remember to label your belongings.

# What will be expected of me?

You will succeed at Lawn Manor Academy by following our **I LEARN** values.

**I LEARN** stands for:

- I** Independence
- L** Literacy
- E** Equipment
- A** Attitude
- R** Resilience
- N** Numeracy

Our standards of behaviour are found in the word **PUPIL**, which stands for:

- P** Punctuality
- U** Uniform
- P** Politeness
- I** Instructions
- L** Locality

## Praise and celebration

Praise and celebration can motivate pupils and help them see that we value good behaviour. Words are the most powerful form of praise.

We also promote and reward good behaviour with:

- Postcards, phone calls, texts, letters home, certificates
- 'Pupil of the Month'
- Reward trips
- House points
- Headteacher commendation
- Enrichment week
- End of year celebrations
- Homework and attendance weekly prize draws

We celebrate good or improved attendance by sending texts, postcards, or letters to your home, or with achievement certificates. We also hold inter-I LEARN group competitions and weekly prize draws for attendance.

## Behaviour

You are expected to behave well both inside and outside of the classroom. You should follow the 'Lawn Manor Way', which includes the expectations outlined in PUPIL. You should carry a conduct card. Staff will record a Conduct Point on your card if you do not meet our expectations. If you collect five Conduct Points, sanctions can include a detention. In the classroom you should follow SLANT: Sit up, Listen, Ask and answer questions, Nod your head, Track the speaker.



## Top Tip

Think about what you could do to earn rewards.

# What does the school day look like?

You should be in school by 8.35am. The school day looks like this:

8.40am — 9.00am	I LEARN
9.00am — 10.00am	Lesson 1
10.00am — 11.00am	Lesson 2
11.00am — 11.20am	Break
11.20am — 12.20pm	Lesson 3
12.20pm — 1.00pm	Lunch
1.00pm — 1.20pm	I LEARN Reading
1.20pm — 2.20pm	Lesson 4
2.20pm — 3.20pm	Lesson 5
3.20pm — 4.30pm	Detaining Time/Enrichment

## Homework

You will be set homework regularly for each subject. Your teachers will use **Satchel One** to set your homework. Doing homework develops skills needed to learn independently and helps you better understand what you learned in class.

Teachers will award House Points for completed homework and give three times as many for exceptional homework.

If you need more help, homework support groups for specific subjects run daily from 3.20pm until 4pm.



## Subjects

We run a two-week timetable, which alternates each week. Subjects include:

- Art
- Computing
- Dance
- Design and Technology
- Drama
- English
- Geography
- History
- Maths
- Music
- PE
- Religion, Philosophy, and Ethics
- Science
- Spanish

## Lunch and break times

Freshly prepared hot and cold food is served at our canteen during morning break and lunchtime. The menu changes regularly,

includes foods from around the world, and is suitable for all diets, so there is lots for you to try.

You can get paninis, salads, soups, jacket potatoes, and sweet treats for a snack. The lunch menu includes pasta, quesadillas, fish and chips, roast dinners, curries, vegetarian lasagne, and more. If you prefer, you can bring in a packed lunch.



## Top Tip

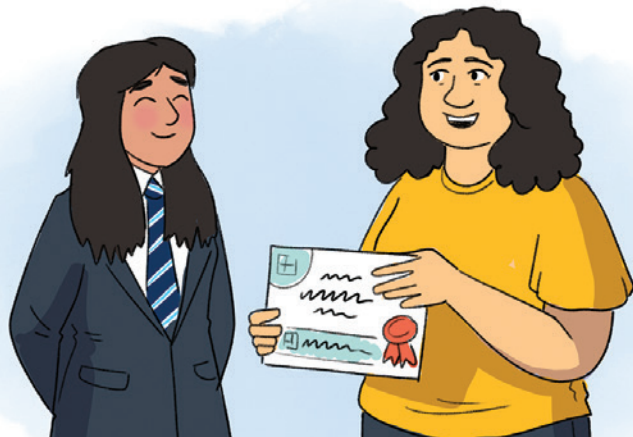
If you get lost, just ask an older pupil or adult. They will be happy to help you.

## Where will I fit in?

You will belong to an I LEARN Tutor Group, and your I LEARN Tutor will be responsible for your academic and pastoral support. Everyone in your I LEARN Tutor Group will be in the same House as you. After lunch, you will have an I LEARN reading session, during which your I LEARN Tutor will read to you to help you develop reading and comprehension skills.

### Who do I speak to if I need help?

Your I LEARN Tutor is the first person to speak to if you or your parents need support or someone to talk to. Year Leaders also support pupils with any difficulties they might have and work very closely with the Head of Student Support, who is responsible for the behaviour and support of pupils.



### Houses

You will be a member of one of three Houses. They are called Fitzroy, Pleydell, and Goddard. The Houses were named by pupils when the school opened and take their name from Major Fitzroy Pleydell Goddard, the last member of the Goddard family who lived in the manor house behind the school.

We hold House competitions and events throughout the year. We award House Points for attendance, and one House will be named Attendance Champion each year. There is also a Staff House Point Champion, House Sports Champion, and House Overall Champion. Houses also run charity fundraising events.

### Top Tip

Talking to someone when you feel worried or upset is always a good idea. There are lots of people to speak to at LMA.



## What else can I do at LMA?

Taking part in extra-curricular activities helps you make new friends, develop new skills such as time management, social skills, and responsibility, and build confidence. Colleges, universities, and employers are interested in knowing what you do with your time outside your studies.

There are lots of lunchtime and after-school clubs you can join, such as:

Sports activities also run at lunchtime and after school. They include:

- Basketball
- Dodgeball
- Rugby
- Girls' Football
- Boys' Football
- Table Tennis
- Volleyball
- Netball

- Young Carers
- Mindful Drawing
- Art
- Creative Writing
- LGBTQ+
- History
- Arts and Crafts
- Quiz Night
- Japanese
- Forest School
- Chess and Board Games
- Debate
- Singing Stars Choir
- Swindon Youth for Christ



## The library

The school library is the hub of the school. It houses a large collection of fiction and non-fiction books, computers that you can use for schoolwork, and educational games and puzzles you can use during breaktimes.

All the books are organised into genres, so finding what you are looking for is easy. You will also find a large reference section. You may borrow two books at any one time for two weeks, although you can extend your loan if you ask. You will also find the Accelerated Reader books you will be using in your English lessons.

When you join, you will have a tour of the library, when we will explain how it runs, where items are, the facilities, and what we expect from you while you are in the library. Then you will be able to choose your first book.



### Top Tip

Join at least one club. They're a great way to make new friends.



LAWN MANOR  
ACADEMY

**Lawn Manor Academy**  
Salcombe Grove  
Swindon  
Wiltshire SN3 1ER  
[www.lawnmanor.org](http://www.lawnmanor.org)

- 1 Reception and visitors parking
- 2 Library
- 3 Science
- 4 Bike sheds
- 5 English
- 6 MFL (3rd floor)
- 7 Learning Support
- 8 Creative Technologies
- 9 East Manor Hall and Gym (Dance & PE)
- 10 Music & Drama
- 11 West Manor Hall
- 12 West Manor Gym
- 13 Canteen
- 14 Humanities (ground floor)
- 15 Maths (2nd floor)
- 16 Art (3rd floor)
- 17 Student Services
- 18 Tennis Courts & Fire Assembly points
- 19 Cricket nets
- 20 Canopies

### West Manor

### Lawn Entrance

### Visitor Entrance

### Central Manor

### East Manor

### Queens Drive Pedestrian Entrance



Fire Assembly point