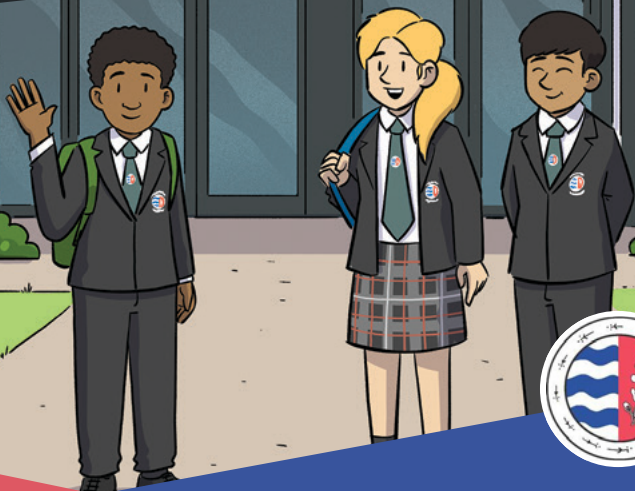


Welcome to Lincroft Academy

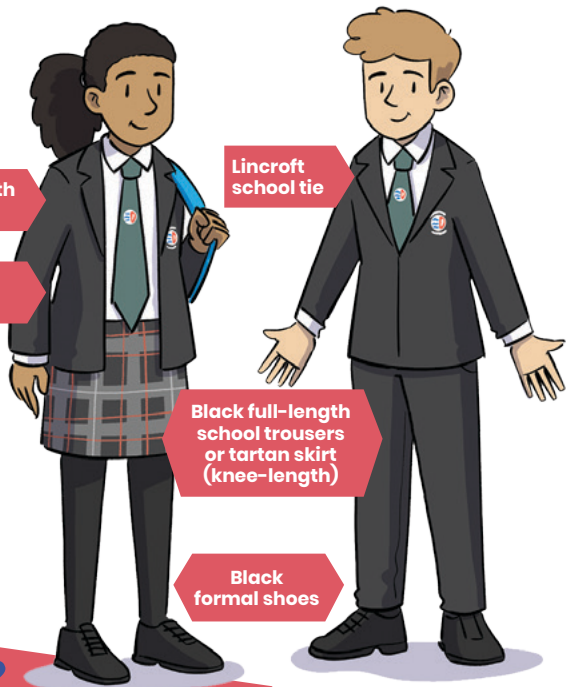
Your Pocket Guide



Community, Growth and Achievement

What will I need for my first day?

You will wear the correct uniform from your first day. You will also bring a strong rucksack, carrying your belongings, equipment, reading book and a packed lunch. Make sure all of your equipment, clothes and belongings are labelled with your name.



TopTip

Pack your bag the night before each school day so you aren't in a rush in the morning and forget things.

Equipment

Strong waterproof rucksack containing:

- Pencil case
- Blue or black handwriting pens x 2
- Pencils x 2, including B or 2B pencil for Art
- Wired earphones with a mini jack for IT and Music
- Purple pens x 2 (for self-marking)
- Ruler
- Scientific calculator (Casio FX-991EX Scientific or Casio FX-85ES Plus, preferred by Maths Department)
- 360 degree protractor
- Glue stick
- Set of colouring pencils
- Reading book

We will give you a student planner/homework diary when you join us, which you will need to bring each day. A set of highlighter pens is also very useful.

What does the school day look like?

You can arrive at school from 8.20am. The school day starts at 8.40am with registration and ends at 3.30pm. There are six periods each day, with a morning break and lunch break.

What will I study?

You will study a brilliant range of subjects in Year 7 at Lincroft Academy:

Art, Computing, Dance, Design and Technology, Drama, English, Food Technology, French, Geography, German, History, Maths, Music, PE, Religious Studies and Science.

Your teachers will be experts in their subjects. They will be supportive and approachable but also challenge you to reach your full potential.

We follow the Lincroft Way which:

- promotes excellence in all things
- helps you develop your character to be the best version of yourself
- fosters a sense of pride and belonging
- supports you to become resilient and develop self-confidence
- will encourage you to take advantage of all the opportunities on offer

TopTip

Don't worry if you don't know anyone else when you start at Lincroft – you will soon make friends. We have lots of activities when you join us which will help break the ice with your new classmates.

Map

Map of the Ground floor



Map of the First floor



- Jubilee block -Humanities and Media
- Oak block -Maths and Art
- Computer rooms
- Design and Food Technology rooms
- Science rooms
- PE and Performing Arts
- Lower block -Languages
- Upper block -English

Don't worry – we will help you find your way round the school and you can ask anyone here for help. You will soon feel at home and know where everything is!



Lincroft Academy may seem big compared to your previous school and you may worry about getting lost.

What else can I do at Lincroft Academy?

There is a brilliant range of other extra-curricular activities on offer!

They take place before school, at lunchtime and after school:

computing club, art, stem, maths club, athletics, badminton, basketball, cross country, dodgeball, football, futsal, handball, netball, rugby union, table tennis, volleyball, vocal club, drama, scrabble club, journalism club and debating.

Later on in your time with us, you can take part in the Duke of Edinburgh's Award Scheme. We offer trips to support what you are studying or to visit theatres, galleries and much more. We also run many charity fund-raising activities.



Top Tip

Join a club. There is something for everyone and it's a great way of making new friends.

What is the PLEDGES system?

The PLEDGES award system offers a range of opportunities which will help you develop as a fully rounded person.

There are bronze, silver and gold levels which look at:

Participation

Leadership

Excellence

Diversity

Giving

Environment

Service



You will develop from someone who takes part, to someone who can organise and lead, and who develops brilliant skills which will have lifelong benefits.

What about homework?

You will receive regular homework for most subjects. You can keep track of it on Edulink One and your parents/carers can also log on to view it.

What about food?

There is a great range of food available at our canteen at break and lunchtime. The menu ranges from snacks and drinks to full meals and offers a 'World Kitchen' menu. It is all great value and you pay via fingerprint or with a four-digit pin. Your parents/carers will pay funds into your ParentPay account, which is charged for your meals.

Top Tip

Organise your week so that you can complete your homework on time and to a standard you are happy with.

What happens if I need help?

Any adult at Lincroft Academy can help but the best person to speak to will be the Student Support Staff. You can also speak to your Tutor, Head of Year and Head of Key Stage 3 – whoever you feel most comfortable speaking to.

If you are worried about anything, don't hold it in – ask for help!



The school day

Gate Opens:	8.20am
First bell:	8.40am
Registration/Form:	8.45am – 9.20am
Lesson 1:	9.20am – 10.20am
Lesson 2:	10.20am – 11.20am
Break:	11.20am – 11.40am
Lesson 3:	11.40am – 12.40pm
Lesson 4a:	12.40pm – 1.40pm
Lunch A:	12.40pm – 1.30pm
Lesson 4b:	1.30pm – 2.30pm
Lunch B:	1.40pm – 2.30pm
Lesson 5:	2.30pm – 3.30pm



Top Tips

Tell a teacher if you are worried about anything. They will help.

Enjoy yourself! We want your time at Lincroft to be amazing!



Lincroft Academy
Station Road, Oakley,
Bedfordshire, MK43 7RE

Phone: 01234 822147

Website: www.lincroft.beds.sch.uk

Email: administration@lincroft.academy