

# YOUR POCKET GUIDE TO ST MARY'S COLLEGE



WORLD CLASS THINKING: WORLD CLASS ACHIEVING

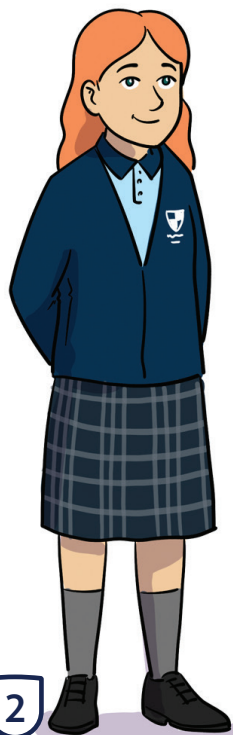


St Cuthbert's  
ROMAN CATHOLIC ACADEMY TRUST



## WHAT DO I WEAR FOR MY FIRST DAY?

We have high standards at St Mary's College, and we expect you to wear the correct uniform from your first day.



St Mary's College  
sky-blue polo shirt

•

St Mary's College  
V-necked navy jumper  
or cardigan (optional)

•

Mid-grey trousers, not  
made of jersey material

•

Kilt-style skirt (girls)

•

White, grey  
or black socks

•

Neutral, black  
or grey tights

•

Sensible, all black,  
full shoe,

NO trainers or boots



## WHAT EQUIPMENT WILL I NEED?

### YOU WILL NEED TO BRING THE FOLLOWING ITEMS EACH DAY:

- At least two black pens
- A red pen
- At least two pencils
- A rubber
- A clear, non-flexible plastic ruler with cm measurements on
- A pencil sharpener
- A pencil case
- A reading book of your own choice



### IT IS ALSO USEFUL TO BRING:

- Highlighter pens
- A set of coloured pencils
- A glue stick

A subject equipment pack will also be available to buy at the Induction Evening.

You should put everything into a school bag that is large enough to carry books, PE kit and equipment.



# WHAT HAPPENS ON MY FIRST DAY?

You will already have come to see us for Transition Week.

When you arrive, staff will be at each entrance to direct you where you need to go. These will include the Year 7 Tutors and the Headteacher, Mrs Stead. Your parents/carers cannot come to the school grounds with you.

Then you will go to the Year 7 area, where your Tutors will take you to your form rooms, just like in Transition Week.

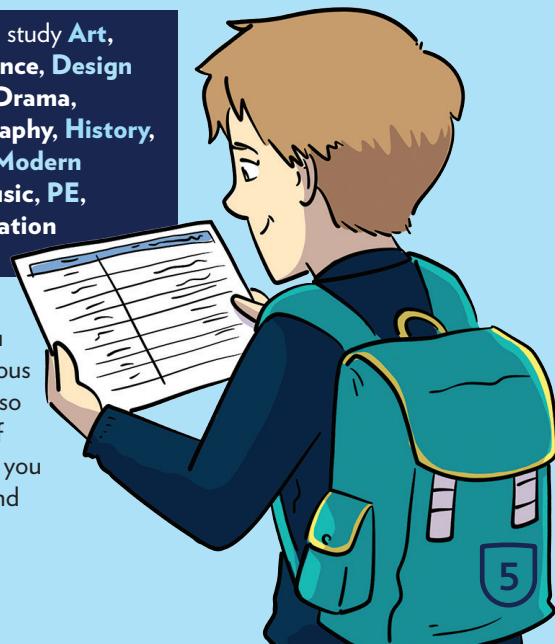


## DURING YOUR FIRST MORNING, YOU WILL:

- Spend some time with your Form Tutor to look through your new timetable and planner and to refresh your memory of life at St Mary's College.
- Have your school photograph taken.
- Attend your first lessons.

In Year 7, you will study **Art, Computer Science, Design & Technology, Drama, English, Geography, History, Mathematics, Modern Languages, Music, PE, Religious Education and Science.**

We know that you may be a bit nervous when you join us, so you will get lots of support to ensure you settle in quickly and confidently.



# WHAT HAPPENS IN A SCHOOL DAY?

You can come into school from 8.15am each day, when school reception opens.

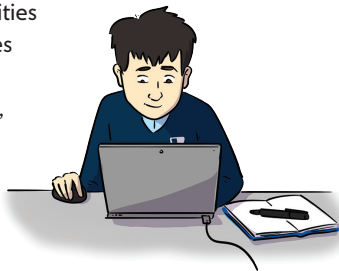
## EACH DAY WILL LOOK LIKE THIS:

- 8.45am-9.15am: Registration/Pastoral Time/Assembly
- 9.20am-10.20am: Lesson 1
- 10.20am-10.35am: Break
- 10.35am-11.35am: Lesson 2
- 11.40am-12.40pm: Lesson 3
- 12.40pm-1.25pm: Lunch break
- 1.30pm-2.30pm: Lesson 4
- 2.35pm-3.35pm: Lesson 5



## WHAT EXTRA-CURRICULAR CLUBS ARE AVAILABLE?

We have a wide variety of clubs available to suit all tastes. They will help you develop leadership, teamwork and communication skills. Our clubs cover a huge range of interests, including art, choirs, dance, orchestras, maths, acting, history, science, Minecraft coding, and lots more. We also run sports and PE activities after school and at lunchtime. Activities include football, netball, badminton, table tennis, fitness suite, trampolining, cricket, rugby, and weights sessions.



# FREQUENTLY ASKED QUESTIONS

## DO YEAR 7 HAVE THEIR OWN SPACE?

Yes! The Year 7 Social Area is only for Year 7 students and can be used at breaktimes and lunchtimes. You can chat to friends here, read a book, or eat your lunch.

## WHO CAN I ASK FOR HELP IF I HAVE FORGOTTEN SOMETHING OR AM WORRIED ABOUT SOMETHING?

You can always ask your Year Team for help. The Year 7 Team are based near the Year 7 Social Area and can always help with any questions or worries.

## HOW DO I KNOW WHICH CLUBS ARE AVAILABLE?

Your Form Tutor will tell you which clubs are available on which days and there is a notice board in the Year 7 Social Area with club information on too.

## WHAT HAPPENS IF THE FIRE ALARM GOES OFF?

Follow your classroom teacher's instructions and tell them if you are worried. You will always be safe and we will always look after you!

## WHAT HAPPENS IF I LOSE SOMETHING?

We have lots of lost property areas at St Mary's College (including in the Year 7 Social Area). Any lost items will be taken to a lost property area. Make sure you put your name in all of your belongings so if you lose anything, you are more likely to locate it.

## WHAT IF I GET LOST?

Always ask for help. Students and staff will help you to get to where you need to be. You will know your way around very quickly!

## HOW DO MY PARENTS/CARERS CONTACT THE SCHOOL?

They can email the Year 7 office via [year7office@smchull.org](mailto:year7office@smchull.org) for any help or queries.

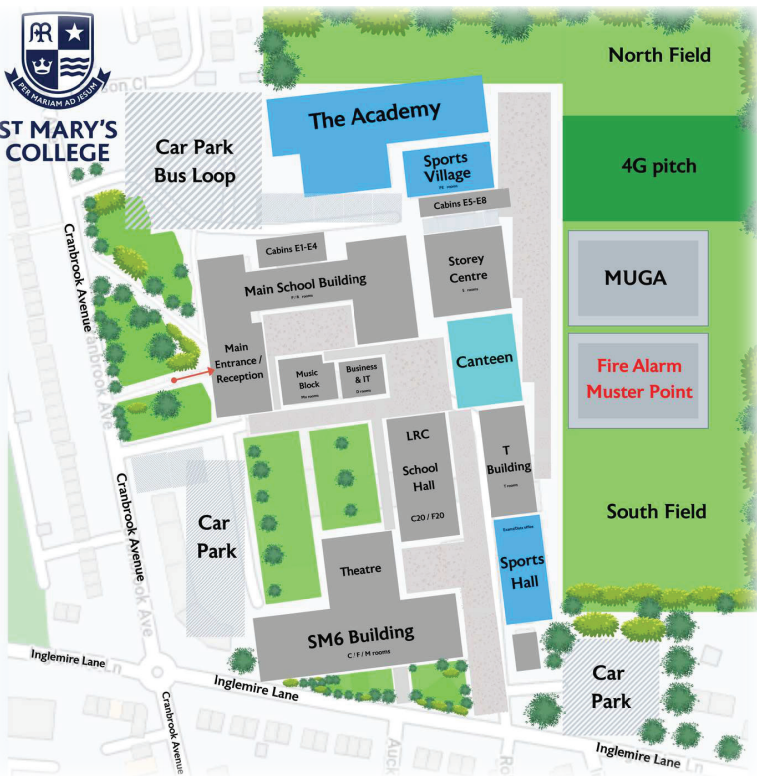
## WHAT IF I HAVE AN APPOINTMENT DURING SCHOOL HOURS?

You must have a note in your planner with the time of the appointment and then you will be issued with a slip to sign out. You must be collected from the main reception by a parent/carer.





**ST MARY'S  
COLLEGE**



**ST MARY'S  
COLLEGE**

**ST MARY'S COLLEGE**  
Cranbrook Avenue, Hull, HU6 7TN  
Tel: 01482 851136  
Email: [admin@smchull.org](mailto:admin@smchull.org)  
Website: [www.smchull.org](http://www.smchull.org)

Devised and produced by Stoneworks Education Ltd [www.stoneworkseducation.co.uk](http://www.stoneworkseducation.co.uk)