



WELCOME TO THE GRANGE SCHOOL



WHAT DO I WEAR FOR MY FIRST DAY?

All students must wear the correct uniform in September.

BOYS



Black blazer with
Grange School badge

Pale blue shirt

Black V-neck jumper
(optional)

Grange School tie

Black trousers

Plain black socks

Black shoes

Black or dark blue topcoat

GIRLS



Blue check
skirt or black
trousers

Plain black tights

WHAT WILL I NEED FOR MY FIRST DAY?

Make sure you have the equipment you need, such as:

- A suitable backpack
- Pencil case
- Blue or black pen
- Pencil
- Ruler
- Green pen
- Rubber
- Scientific calculator
- Maths set
- A reading book of your choice
- Snack/lunch if you aren't buying from the canteen



If you will be buying lunch from the school canteen, you can pay in cash for the first few days until we have set up your cashless account using your fingerprint. After this, your parent/carer will put money into your online account, so there will be no need to bring cash to school.

4 WHAT DOES THE GRANGE SCHOOL EXPECT FROM ME?

Achievement Points

As a whole school community, it is important that we recognise hard work, commitment and sustained effort from our students. We aim to celebrate successes and focus on rewarding effort and achievement.

Achievement points are used in lessons to reward student achievement and effort. If you contribute to the positive ethos of the school, you will be recognised and rewarded. You can be awarded achievement points for a variety of attitudes, achievements and behaviours, including good work, outstanding participation in class and attending extra-curricular events.

Each day you are present in school and marked on time for morning registration, you will be awarded five achievement points by your Form Tutor. These will recognise five key expectations:

Attendance Punctuality Correct Uniform
Correct Equipment A Can-Do Attitude

Homework

You will also be expected to do regular homework. Subject homework is posted online using the 'Satchel One' website or app. You will be able to log on and view your homework calendar as well as your timetable and behaviour and attendance records.

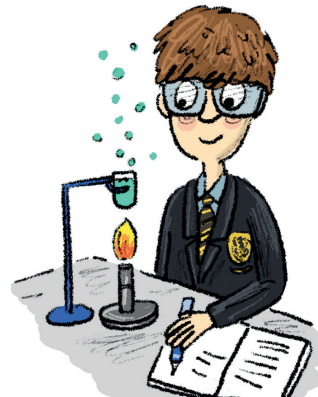


5 WHAT IS A TYPICAL SCHOOL DAY LIKE?

Each day there are five lessons as well as tutor time, break, lunch and DEAR time (drop everything and read).

8.25am	Registration and tutor time
8.55am	Lesson 1
9.55am	Break
10.20am	Lesson 2
11.15am	DEAR time
11.30am	Lesson 3
12.25pm	Lunch
1.05pm	Lesson 4
2.05pm	Lesson 5
3.00pm	End of the school day

At lunchtime you can either buy a delicious lunch from the school canteen, where there are lots of different options available, or bring in a packed lunch from home.



WHAT SUBJECTS WILL I STUDY?

You will study the following subjects:

Art Design & Technology **Drama** **English**
Enterprise **French** **Geography** **History**
ICT and Computer Science **Maths** **Music**
Physical Education **PSHCE** **Religious Studies**
Science **Spanish** **Urdu**

You will move between different classrooms for each subject and will soon get used to finding your way around. If you aren't sure where you are going, ask a teacher or an older student and they will be very happy to help.



WHAT ELSE CAN I DO AT THE GRANGE SCHOOL?

We offer a broad range of extra-curricular clubs and try to ensure there is something for everyone. Some of the clubs you can get involved in are:

Music clubs – including choir, orchestra and band practice, **Sports clubs** – for example boys' and girls' football, basketball, netball, gym and active club, **Jewellery club**, **Drama club** and **Science club**.

We believe that extra-curricular activities are really important in establishing a thriving school community. They are also a great way of making new friends, finding a new interest and learning a new skill.



WHO CAN I TALK TO IF I'M UPSET OR WORRIED ABOUT ANYTHING?

Buddies

It is important to us that you feel safe and happy at school. To support you when you join us, your form will be assigned Year 10 students as 'Buddies'. They will help you settle into life at The Grange School, show you around and answer any questions you might have.

In addition to your Buddies, you can also speak with your Form Tutor, Year Team Leaders, Key Stage Leaders and Student Support Officers at Stapleton House, for any help or support you might need.



The Grange School

Wendover Way, Aylesbury, Buckinghamshire, HP21 7NH

Phone: 01296 390900

Email: office@grange.bucks.sch.uk

Website: www.grange.bucks.sch.uk

Devised and produced by Stoneworks Education Ltd www.stoneworkseducation.co.uk

Copyright © 2014-2023 Stoneworks Education Ltd.