



Woking High School
Inspire, Challenge, Achieve

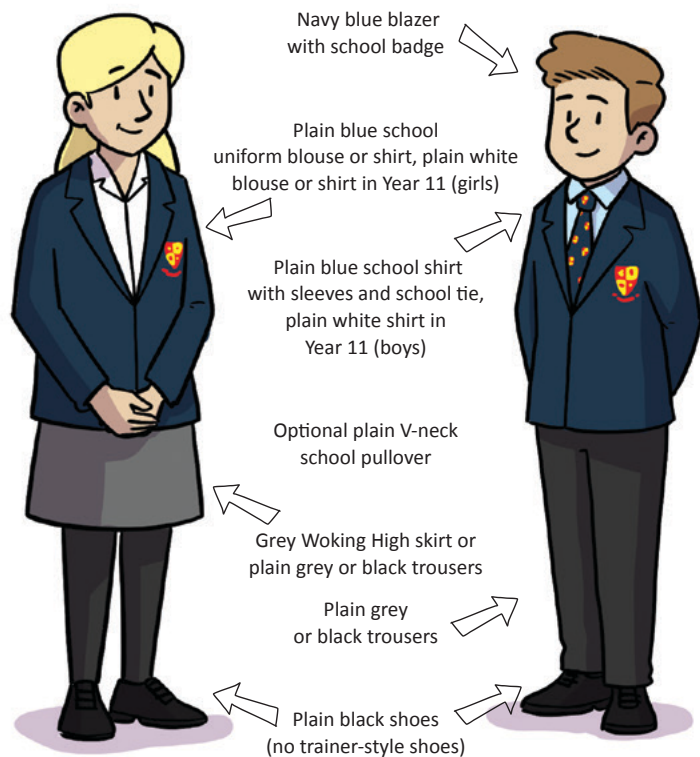
Welcome to Woking High School Your Pocket Guide



Inspire, Challenge, Achieve

What do I wear for my first day?

We have high standards at Woking High School, so it is important to wear the correct uniform from your first day.

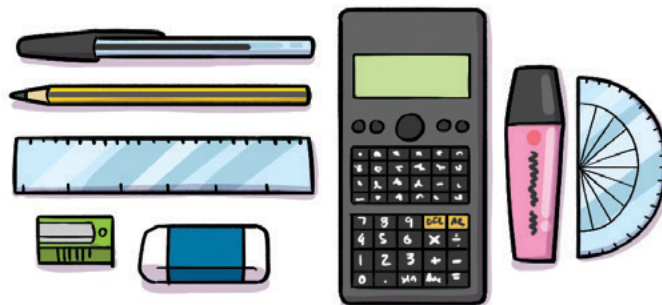


What equipment will I need?

You must bring your pencil case every day, and inside you should have:

- A black or blue pen
- A pencil
- A ruler
- A rubber
- A pencil sharpener
- A protractor
- A highlighter
- A Casio fx-85GTX calculator
- Spare pens

You can buy stationery from the equipment shop in the morning before school starts. The calculator can be bought via SCOPAY.



- Pack your bag the night before.
- Recheck your bag in the morning.
- Look after your things during the day.

What are our values at Woking High School?

Our core values help you to succeed in your work and behaviour. They are:

Personal responsibility

- Taking responsibility for our own actions and the way we behave.
- We accept the consequences of our actions and move forward with a positive mindset.
- Our choices shape our futures, even when life is tough.

Excellence

- We aspire to be better than we are right now.
- We achieve excellence through hard work and always give 100%.
- Success is a journey; failure is part of learning and should not be feared.

Resilience

- We are determined to never to give up, regardless of setbacks.
- We focus on solutions when facing a problem.
- We look at struggles and challenges as opportunities to learn and grow.

Kindness

- We are friendly, considerate, and generous in all we do.
- Politeness to others and small acts of kindness make a big difference.
- No acceptance of unkind behaviours – challenge it, report it, change it.

Inclusion

- We recognise and celebrate diversity.
- We show tolerance, understanding, and acceptance of others, regardless of their differences and views.

Engagement

- We attend school every day.
- We actively participate in learning.
- We give back to the school community.



What is expected of me?

We expect a high standard of behaviour from all our students in lessons and around the school. You should always follow our Code of Conduct:

1. Attend

2. Be punctual

3. Act sensibly

4. Try hard and achieve your best

5. Treat everyone and everything with respect

6. Do not tolerate bullying of any kind.

Your teacher will reward you with an **Achievement Point** when you do well.

50 points: Achievement Award – Letter of Achievement from your Head of Year

100 points: Bronze Award – Bronze Certificate and Bronze Star

150 points: Silver Award – Silver Star and Certificate

200 points: Gold Award – Gold Star and Certificate

250 points: Platinum Award – Platinum Star and Letter of Achievement from the Headteacher.

Aspire to Be (A2B)

Our A2B programme teaches you to live by our shared values. You will learn to understand yourself and others, keep safe, create and maintain healthy relationships, and prepare to contribute positively to the world around you.

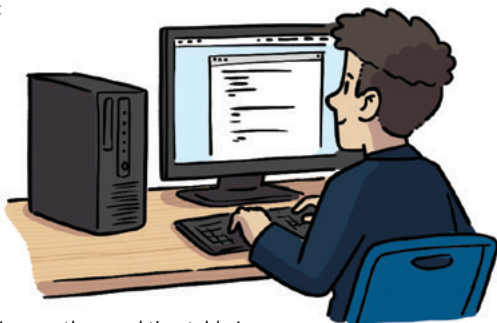
An important part of A2B is our '**Challenge it, Report it, Change it, Together**' initiative to stand together against unkind behaviour.



What happens in a school day?

Each day will look like this:

- 08.45–09.10:** Registration
- 09.10–10.10:** Period 1
- 10.10–11.10:** Period 2
- 11.10–11.30:** Break
- 11.30–12.30:** Period 3
- 12.30–13.00:** Lunch
- 13.00–14.00:** Period 4
- 14.00–15.00:** Period 5



On six days of the academic year, the usual timetable is replaced by 'Aspire to Be' Day, when you will do activities in our A2B programme and take part in other enrichment activities and trips.

Who do I speak to if I am worried?

If you have any worries or questions, the first person to turn to is your Tutor. Other people available include the Head of Year, Pastoral Coordinators, other pastoral support staff or any member of staff. They are always willing to help. If you need a timetable, have lost anything, or have any general queries, you can ask at Student Reception.



What about homework?

All your homework will be set in class and recorded on ClassCharts for you to access after your lesson.

You should hand in your homework by the date it is due. You will usually get five school days to complete your homework. It is a good idea to log in to ClassCharts to check what homework you have and when it is due.

If you need help doing your homework, and you have checked your exercise book first, you should email or speak to your subject teacher as soon as possible. If you are struggling, you can ask your Head of Year for support.



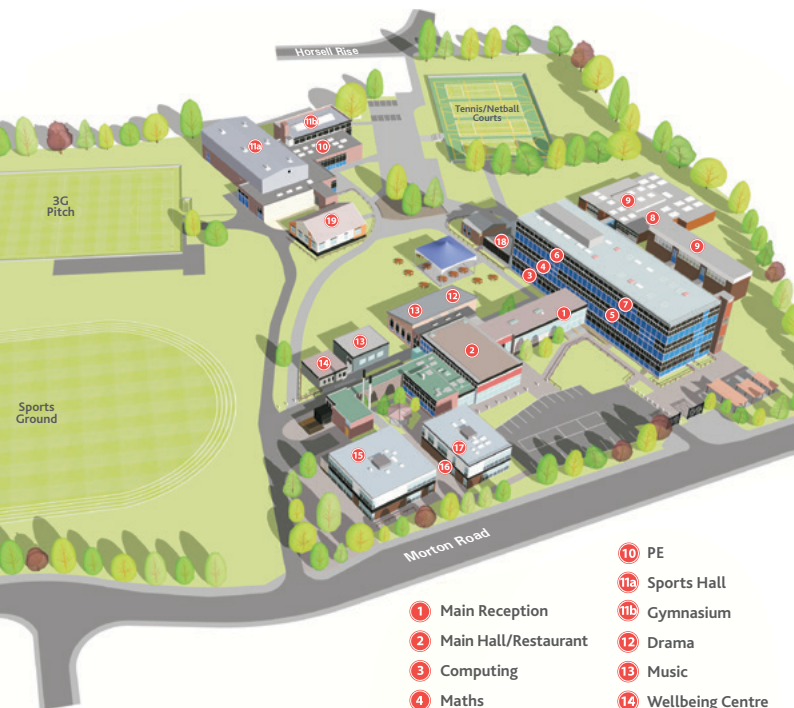
What extra-curricular clubs and trips are available?

We have a variety of exciting clubs open to all students, that take place before and after school and at lunchtime. They include:

art, athletics, basketball, creative writing, cricket, cross-country, food and nutrition, football, LGBTQ+, netball, orchestra, Raspberry Pi programming, rounders, science, street dance, and tennis.

We also run the Duke of Edinburgh's Award scheme and Pie Productions – our school-based production company for whole-school productions.

You will have the opportunity to go on amazing school trips in the UK and abroad.



Here is a map
of our school

- 1 Main Reception
- 2 Main Hall/Restaurant
- 3 Computing
- 4 Maths
- 5 Languages
- 6 RE
- 7 Science
- 8 Art
- 9 Design Technology

- 10 PE
- 11a Sports Hall
- 11b Gymnasium
- 12 Drama
- 13 Music
- 14 Wellbeing Centre
- 15 English
- 16 History
- 17 Geography
- 18 Library
- 19 SEND



Woking High School
Inspire, Challenge, Achieve

Woking High School, Morton Road, Horsell, Woking, Surrey, GU21 4TJ
Tel: 01483 888447 Fax: 01483 888448 Email: info@wokinghigh.surrey.sch.uk

www.wokinghigh.surrey.sch.uk