



MINSTER CHURCH OF ENGLAND PRIMARY SCHOOL

NURTURING FOUNDATIONS, FLOURISHING WITH GOD



WELCOME TO MINSTER CHURCH OF ENGLAND PRIMARY SCHOOL FROM THE SENIOR LEADERSHIP TEAM AND OUR GOVERNORS

The Minster Vibe

Visitors to our school frequently comment on our warm and welcoming atmosphere, which we have named The Minster Vibe. It is a quality which cannot be easily defined, but which marks our school out as the very special place it is. Our absolute priority - and at the heart of everything we do - is the children in our care; that our children feel valued, appreciated for who they are, and respected for their unique selves.

‘The Minster Child’

We pride ourselves on making the most of every child, in every way, from providing an excellent education to ensuring that their health and wellbeing are prioritised at this important stage in their lives. The children at Minster thrive in our warm Christian environment, achieving not only academically, but also by becoming well-rounded, independent and socially responsible young people.

Christian Foundation

Every child at Minster is nurtured according to our Christian foundation. Our aim is to develop the whole child, providing them with the skills, confidence and empathy for others which will help them become the best people they can be.

Pastoral Care

The pastoral care we offer is a high priority. Children flourish academically when their wider needs are addressed. Our specialist Pastoral Team work hard to ensure that every child has the resources and support they need so that they can fully engage with, and enjoy, everything our school provides.

A model for learning: igniting their learning journey

Our curriculum is broad, creative, fun and flexible. Our Model for Learning helps to ensure that all our pupils are fully involved and given the spark of interest to ignite their learning journey.

Contact us and pay us a visit

Please come and see for yourself the unique ‘Minster Vibe’ in action. To visit our wonderful school, contact the school office on either 01843 821384 or office@minster-ramsgate.kent.sch.uk.

“I feel the School nurtures the child as a whole, as well as the academic side and lets children shine for many different types of achievement.”



OUR VISION STATEMENT

NURTURING FOUNDATIONS, FLOURISHING WITH GOD

Rooted in our Christian Foundations, we nurture, respect and value everyone, in the loving community of our village school.

Through our holistic development of both character and curriculum, our children learn and flourish.

From little seeds we grow: caring for God’s world, building lifelong foundations and striving for a just and harmonious society.

THE MUSTARD SEED

³¹ He put another parable before them, saying, “The kingdom of heaven is like a grain of mustard seed that a man took and sowed in his field. ³² It is the smallest of all seeds, but when it has grown it is larger than all the garden plants and becomes a tree, so that the birds of the air come and make nests in its branches.” *Matthew 13:31-32 English Standard Version Anglicised (ESVUK)*

WE NURTURE THEM AND HELP THEM TO GROW

We believe that this Bible narrative represents our school because it tells the story of our children; they come to us when they are very tiny, we nurture them and help them to grow. Just as the mustard tree must develop strong, deep roots, we encourage our children to do the same, embodying our Christian Foundations of Creation, Justice, Love, Peace and Forgiveness.

BECOMING FORCES FOR GOOD IN OUR SOCIETY

Our children become more than they or we could ever imagine, and then, just as the mustard seed becomes a huge tree which influences and benefits the birds, they become forces for good in our society. Our school has strong ethical principles, where caring for all God’s children and the world God gave us is of utmost importance. We have shared high standards and commitment to providing a great education for each child in our care.

LIVING LIFE IN ALL ITS FULLNESS

We are passionate about every individual flourishing, so that they can develop as well-rounded children, living life in all its fullness. Every policy is written with our Christian Vision and Foundations in mind.



COMMUNITY LINKS

We are proud to be part of a village laced with history and community spirit. We get involved with as many different village festivities and events as we can. Through our links with the Church the Abbey and the local care home, we support and take part in village activities. We also use our locality as a rich learning environment. We also take part in social action projects such as litter-picks and work with the Parish Council or community projects to develop and enhance the village.

All these things help to develop a sense of social awareness and responsibility in the children... *helping them to celebrate and value God’s world around them.*



SCHOOL DAY: SETTLING IN

SCHOOL HOURS

To enable a smooth start for those parents who need to drop their children off early, we open our school gates at 8.30am. This also gives the children valuable social time together before the school day begins. We encourage our children to make the best use of their bodies and minds actively by walking, scooting or cycling to school. School attendance is exceptionally important, and we place a high priority on it.

- 8.45am: School Begins. From 8.45am all children are welcomed directly into class beginning early morning work.
- At Minster, we operate a flexible timetable. This means that teachers can arrange learning for the day, at times that best suit the age and interests of the children in their year group.
- All children have morning break, lunch time and daily Collective Worship. Timings of these vary according to the year group and the flexible timetable.
- 3.10pm: End of School for EYFS and Key Stage 1. Parents pick children up from designated places where they can talk to class teachers, once every child in the class has been dismissed.
- 3.15pm: End of School for Key Stage 2. The teachers also walk Key Stage 2 classes out to designated spaces allowing handover to parents.

WRAPAROUND CARE

There are external providers, such as Minster Day Nursery who provide both before and after school childcare. Contact details are available from the school office.

UNIFORM

We believe that part of growing up is developing personal standards and having a pride in your appearance. Our school uniform expectations instil this in the children, who look immaculate in their smart but functional school uniform. We expect all children to wear the following uniform:

- White polo shirt or blouse, which we ask to be tucked in whilst in school.
- Royal blue school sweatshirt or school cardigan.
- Dark grey or black trousers, skirts, tailored shorts or pinafore dresses.
- Blue and white gingham dresses can be worn during the summer months.
- Black school shoes
- No Jewellery
- Long hair must be tied back
- P.E. kit - please see the school website for further details as it matches 'House colours'



FOOD IN SCHOOL

Drinks and snacks

EYFS and Key Stage 1 children have fruit at break time. Key Stage 2 children are encouraged to bring fruit which they eat at playtime: no other snack is allowed during break. Key Stage 2 children can also buy fruit from the fruit trolley at break time. Until they turn five, children are entitled to free school milk. Once they are aged five years, parents can continue to pay for milk through our provider, Cool Milk. Water is provided to accompany children's meals.

Drinking water is freely available throughout the school day and every child should bring a bottle to store their water in, which is kept in an accessible place in the classroom.

School lunches and packed lunches

All our school meals are provided by a contracted caterer (Caterlink) who has a healthy-food policy as part of their tender. These are cooked fresh daily in our on-site kitchen. Where possible, this includes the use of fresh fruit and vegetables each day. Caterlink provide a hot meal and a salad bar. They also provide packed lunches where needed.

Many children bring a packed lunch to school. We encourage Parents to send children to school with a healthy lunch. We do not allow sweets, chocolate bars (although we do allow chocolate covered biscuits at present) or fizzy drinks. Children are encouraged to have a drink of water or juice in their lunch box.

Free school meals

All children in EYFS, Years 1 and 2 receive a free school meal. Older children may also be entitled to a free meal if the family is in receipt of certain benefits. If you believe your child may qualify for this, please enquire in confidence, at the school office.



OUR WONDERFUL FACILITIES

THE GREAT OUTDOORS

We are constantly striving to add even more sport and exercise facilities to those we are already fortunate to have. The lovely outdoor space belonging to the school is further enhanced by the all-weather pitch immediately adjacent to our grounds. This is shared by local sports teams, and our school was instrumental in purchasing it for our children and for the use of the local community. Our school grounds give the children the opportunity to participate in a wide range of physical activities, as well as being an attractive space for play, socialising and outdoor learning. Our school garden is a quiet and restful place to relax and enjoy nature. This includes our pond, raised growing beds and the bug and bee hotels.

FOREST SCHOOL

We use our lovely on-site Forest School as part of our curriculum to develop the skills in the world around us and to help our children to learn to risk manage in a safe environment. We take the stimulus from Forest School, and weave this into our school curriculum, creating opportunities for Writing, Science and much more!

FACILITIES IN SCHOOL

As well as our comprehensive library and ICT suite, we also have the garden suite area, used for parental workshops and small group work with our children. We have a pastoral care suite which is used to cater for individual needs and a large, internal Early Years activity area.

VILLAGE LIFE

Being situated in the heart of the village means we are able to take full advantage of the ample facilities Minster-in-Thamet has to offer. We regularly use both religious and secular locations for visits and field trips to support our topic-based learning. With its wealth of history and our close community involvement, the village is very much a part of our school life.

“My child loves going to school and being part of such a warm and friendly environment to learn and develop in.”

“Brilliant teachers, great outdoor facilities and a kind, caring ethos.”



BEHAVIOUR AND WELLBEING

VALUABLE MEMBER OF THE SOCIETY IN WHICH THEY LIVE

A fundamental part of a child’s education is learning to develop personal qualities that enable them to become a valuable member of the society in which they live. Through our behaviour policy we aim to encourage and acknowledge behaviour, which allows all children to learn.

No student should be allowed to behave in a manner which adversely affects the learning opportunities of others. We believe in a culture of inclusion, equal opportunity and respect for all members of our community, and in the importance of self-discipline and self-esteem.

A POSITIVE APPROACH

Discrimination in any form is not tolerated. We recognise that pupils with emotional or behavioural needs should receive support to achieve the expected standard of behaviour. The school has an effective and easily understood Behaviour, Rewards and Sanctions Policy, and a set of school rules which clearly explain the school’s positive approach to behaviour for learning and conduct.

PASTORAL SUPPORT

Our Pastoral Team are always there to help whenever needed, assisting with any social, emotional or welfare problems that impact on our children’s happiness in school. We can also help you, as parents, too!

“School creates a caring family feel and that children are always valued.”



CURRICULUM: FOUNDATIONS FOR THE FUTURE

THE CURRICULUM IS DIVIDED INTO THREE STAGES

- 1. Early Years Foundation Stage: ages 4-5 years
- 2. Key Stages One. 5-7 years.
- 3. Key Stages Two. 7-11 years

At Minster we ensure all children flourish, reach their full potential and aspire to be the best person they can be, in every way.

THE CURRICULUM DEVELOPS OUR CHILDREN IN TWO MAIN WAYS

1: Personal development

The golden thread of ‘character education’ is woven through all our children’s experiences. Over time, this enables them to make positive choices about how they live and behave. We want every child to grow and flourish and become valuable members of our society, through a variety of experiences, as they move through our school.

This ethos underpins our approach to our children’s personal development. It comprises the Spiritual, Moral, Social and Cultural development of our children in order to develop their understanding of our Christian Foundations, and the part they play in our everyday lives. The development of their personal qualities virtues and their understanding of our British Values, enable them to flourish as individuals in our society.

2: Educational development

Our curriculum is ambitious and built in a broad and balanced manner, enabling our children to develop a deep understanding of all subjects and the interconnections between them. Our curriculum is designed to ensure children encounter and revisit their learning through a variety of subject lenses. Over time, these encounters help children to build conceptual frameworks. This enables a better understanding of increasingly sophisticated information and ideas.

Cornerstones Maestro

We use Maestro as a vehicle for this. There are ‘Big Ideas’ that are key themes that run all subject areas. Creative planning ensures meaningful, cross curricular learning using a clear framework for development. National Curriculum programmes of study are broken down into learning intentions to develop children’s skills and knowledge in each particular subject.

Imaginative Learning Projects

Imaginative Learning Projects are carefully selected to meet our children’s needs and interests. Children go through the learning process that comprises of the following stages:

- Engage • Develop • Innovate • Express

Memorable experiences drive the project, creating active engagement for all pupils and offer them life experiences that some of our children do not have access to elsewhere.

A curriculum for all

Our curriculum is a curriculum for all. The careful planning and sequencing of knowledge and skills, means that our children progress successfully. We recognise that each pupil is a unique individual, and our curriculum content is skilfully adapted to meet the needs of all pupils.

For more details of our curriculum, please see our website.

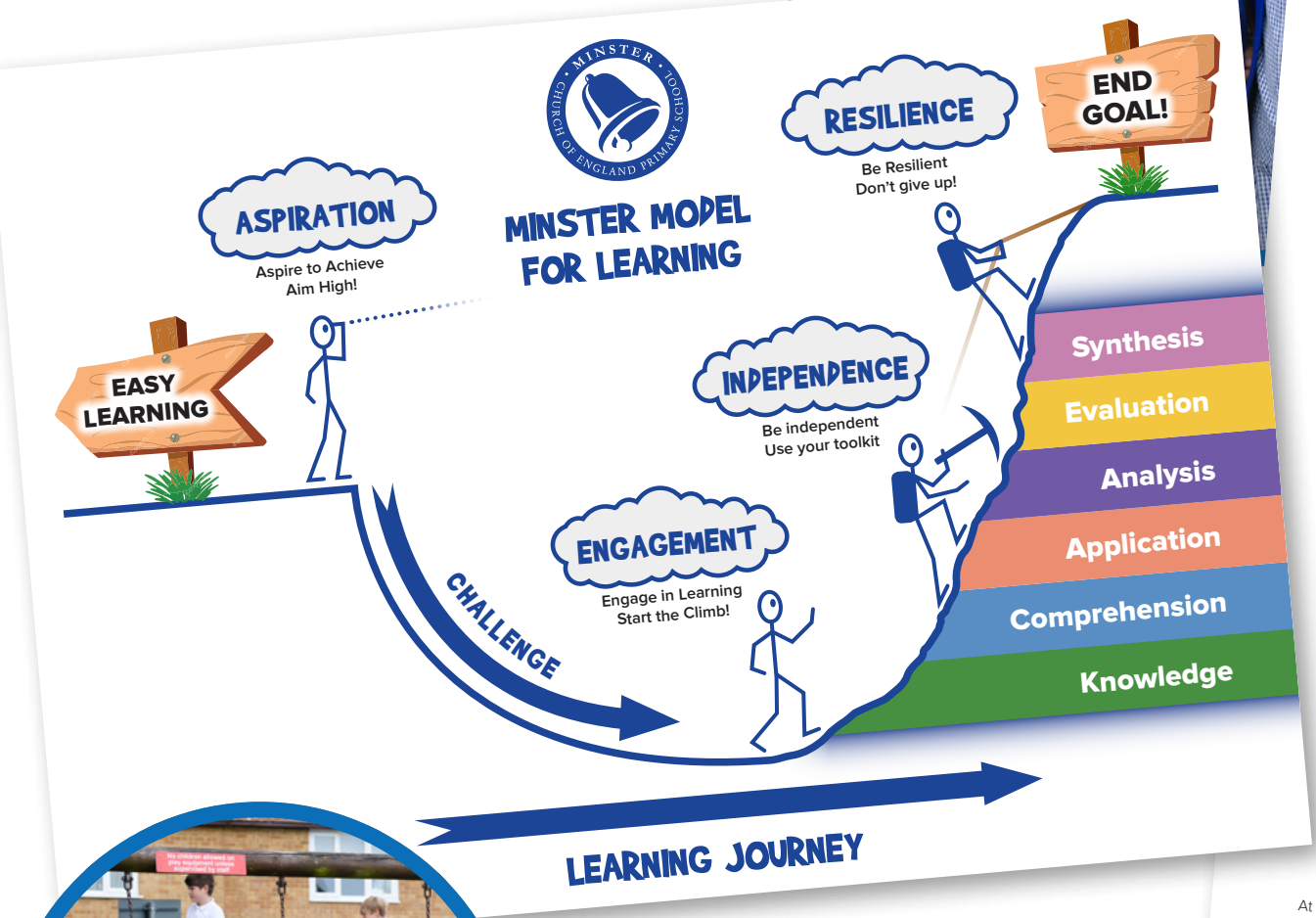


OUR PHILOSOPHY OF LEARNING

We want children at our school to develop a love for learning, to be inquisitive and want to find out information and investigate, We want to develop active learners that seek to find answers to questions.

Learning at Minster centres around a skills based model to ensure children’s thinking is challenged. It ensures a wide exposure to the fundamental thinking skills.

Children will have opportunities to experience and further all of these skills on a daily basis.



THINKING SKILLS
At our school, it is important that we develop our brains through learning in different ways. We use a range of **thinking skills** in all of our learning to achieve this.

LANGUAGE 4 LEARNING
Teachers and children use consistent **language** in learning activities. Through objectives, feedback and marking, we develop our understanding of these skills.



ENRICHED CURRICULUM: TRIPS, VISITORS AND OPPORTUNITIES

ENRICHMENT OPPORTUNITIES

As a creative school, we want to ensure that learning is purposeful but also great fun! To do this, we plan many opportunities for children to experience the wider world, including:

- Visitors.
- Trips out of school.
- Sporting or other types of clubs in school.
- Signposting to clubs and organisations in the local community.
- Use of local facilities to extend learning.

Local visits

Minster village itself provides a rich and varied learning environment with St Mary’s Church, the Abbey and other local amenities nearby. We make use of destinations such as Canterbury Cathedral, the Turner Contemporary or Reculver Nature Reserve.

Further afield

Our learning also extends beyond the County with regular visits to London museums and residential activities across the UK and abroad.

Trips

We run regular theme days and weeks with a specific link to national events and charity days. As well as the inspiring day trips to historical monuments such as Leeds Castle, we take children on residential visits to France in Year 5 and to Hindleap Warren Outdoor Education Centre in Year 6. These trips create opportunities for personal and social education that are second to none.



YOUR CHILD’S ACHIEVEMENTS

COMMUNICATION WITH PARENTS

Effective communication between home and school is especially important, ensuring that parents are kept up to date with their children’s progress, school life and events. We hold two parent evenings a year and an open day, send out seasonal reports, and regular newsletters are issued by email.

Facebook

Our public Facebook page (Minster Church of England Primary School) is constantly updated with news and pictures, and we use ParentLink for those who wish to join the closed group. This is a great way for parents and families to share their ideas and suggestions, keeping us all in touch and helping to shape our wonderful school for the future.

Arbor app

The Arbor app gives you 24-hour access to everything concerning your child at school, enabling you to arrange parent consultation meetings with teachers, book trips, check homework assignments and much more. Some of this communication is through the Arbor email system, as well as the App.

*“Engaging with regular updates and
reponds to enquiries promptly.”*

*“They share information
thoroughly and effectively
to parents.”*

*“Fantastic
communications.”*



INCLUSION: A CURRICULUM FOR ALL

EQUALITY OF OPPORTUNITY

We believe that educational inclusion is about equal opportunities for all learners, whatever their age, gender, ethnicity, impairment, attainment and background. We respond to learners in ways which take account of their varied life experiences and needs. We pay particular attention to the provision for and the achievement of different groups of learners:

- Girls and boys.
- Minority ethnic and faith groups.
- Learners who need support to learn English as an additional language (EAL).
- Learners with special educational needs.
- Learners who are disabled.
- Those who are gifted and talented.
- Those who are looked after by the local authority.
- Any learners who are at risk of disaffection and exclusion.

SPECIAL EDUCATIONAL NEEDS

We are committed to providing an appropriate and high-quality education to all the children. We believe that all children, including those identified as having special educational needs, have a common entitlement to a broad and balanced academic and social curriculum, which is accessible to them, and to be fully included in all aspects of school life. High quality teaching, adapted for individual pupils is the first step in responding to pupils who have or may have SEN and/or an EHCP (Education Health Care Plan).

For any further information or support please contact our SENCo or our Inclusion Coordinator through the main School office.

“The school community is so welcoming and inclusive. The staff are exceptional whichever role they play.”



CLUBS, SPORT AND MUSIC

WIDE VARIETY OF CLUBS

We run a wide variety of extra-curricular clubs at lunchtime and after school, based on the children’s expressed interests. These generally include:

- Dodgeball.
- Basketball.
- Christmas Crafts.
- Choir.
- Rugby.
- Athletics.
- Netball.
- Musical theatre.
- Pottery.
- Golf.



SPORT

At Minster Primary School, we believe that physical activity is vital for health and general wellbeing, and we have invested a great deal of time and effort to provide excellent facilities for the children. We have access to some great outdoor space including an all-weather, floodlit multi-sports pitch, as well as a lovely imaginative play area.

MUSIC

Over and above the national curriculum music provision, we offer optional tuition in a range of instruments, and each year we pick something which all children have the chance to learn how to play, such as the ukulele.

Our active choir performs at venues such as the O2 in London at St Mary’s Church in the village and for ex-service personnel at the Spitfire Museum in Manston.



ADMISSIONS

APPLICATIONS

Admission arrangements for a child to our school are in accordance with those published by the Kent Local Education Authority. Information on the process and the on-line application links can be found on the KCC website, and by phoning them:

- Telephone: 03000 412121
- www.kent.gov.uk

PROCESS OF ADMISSION

- Parents are invited to make an appointment to look around school or take advantage of one of our prearranged open days for the September intake.
- New children (4-year-olds) are gradually phased in during their first term. Parents will be invited to a pre-school meet and greet with their child's teacher within the first two weeks prior to their child starting school.
- We admit children once a year in September when they are four years old. All children therefore enjoy 17 full terms and 1 part-time term before the end of Key Stage 1 (infants).
- In term 6 prior to admission, parents and children have several opportunities, including an Open Day and Familiarisation Day, to meet staff in the Foundation Stage.

Parents of children with a disability are asked to meet with the Inclusion Leader to discuss how best the school can meet the needs of the child.



GETTING INVOLVED

GOVERNORS

Our school governors manage the school with the Executive Headteacher and Head of School. Our Governing Body is made up of Foundation Governors (elected by The Diocese), elected parents, members appointed by the Local Authority (LA), co-opted governors, teacher representatives and the Executive Headteacher who has the option of being a governor. Members are elected for period of four years. A full list of members of the school's Governing Body is available on the school website.

Do you want to be a Governor?

Our parent governors give parents a voice in decision making. They are elected by parents through a ballot. If you are interested in becoming a school governor, please contact the school office.

FUN'RAISING TEAM

Our Fun'Raising Team work hard in organising events to raise money to provide extra facilities and resources for the school. If you would like to contribute ideas, or your time, to help make our school even better equipped please let us know. Everyone is welcome.

VOLUNTEERING AT MINSTER

We actively welcome parents and grandparents as volunteers in school, to help with activities such as hearing the children read, as extra hands on school trips and with cookery lessons and art and craft sessions.



NURTURING FOUNDATIONS, FLOURISHING WITH GOD

Minster Primary School is a Church of England Primary School and our Christian Foundations are at the heart of everything we do:

- Creation
- Love
- Forgiveness
- Justice
- Peace

Our whole school ethos for learning and personal development ensures we have a forward thinking, diverse and innovative culture in which our entire school community flourishes. We are passionate about every individual flourishing so that all our children can develop as well rounded individuals, living life in all its fullness.

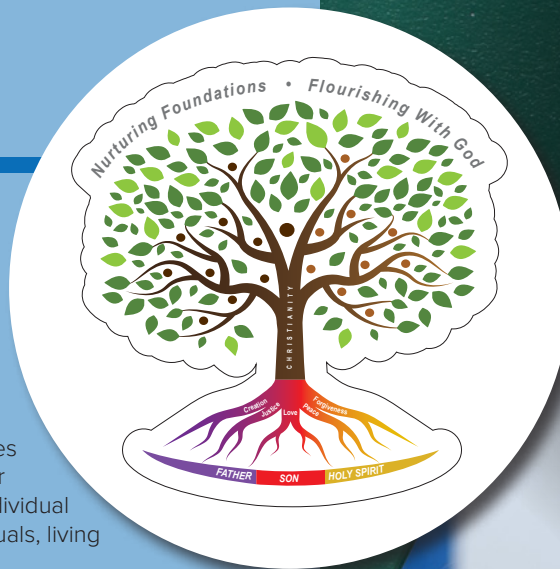
GET IN TOUCH

We are delighted that you are considering our school for your child. Please contact us if you need any further information, or to book an introductory visit. Telephone: 01843 821384 or email office@minster-ramsgate.kent.sch.uk

"Pro active school always ahead of the game in many ways."



Minster Church of England Primary School
Molineux Road, Minster-in-Thanel, Ramsgate CT12 4PS
Telephone: 01843 821384
Email: office@minster-ramsgate.kent.sch.uk
Web: www.minster-ramsgate.kent.sch.uk



"I trust the staff completely, they provide a wonderful environment for the children to learn in."

"Staff are approachable and listen to my concerns."

"The day to day running of the school is well managed and organised."

"The staff are positive and obviously passionate about providing an enjoyable school life for the children."

