

Welcome to Alt Bridge



A BRIDGE TO SUCCESS

How will Alt Bridge help me settle in?

Although starting a new school is exciting, we know that lots of you may be a bit nervous as well. So we will invite you into school in the summer term for two days to help you find out all about us.

On one of these days you will spend time in your Home Room, which is where you will meet with your form and form teacher and have many of your lessons. You will try out some new activities such as DT, which you may not have done before. You will also do some Maths and English.



The other day will be spent at our Forest School. You will do lots of exciting outdoor activities where you will learn new things about nature. You will also find out more about yourself by tackling some new challenges.

How will you look after me at Alt Bridge?

Alt Bridge is a caring school with a brilliant family atmosphere.

We know that you are happier and do your best at school if you feel safe and cared for, so we do everything we can to make our school a supportive environment.



You will see your form teacher and teaching assistant every day and they will get to know you really well. You can tell them about any worries or problems you are having, and they will always help.



You will learn in small classes so your teachers will have lots of time to spend with you.



If you need support with sensory needs or speaking and listening skills, you will be helped by other specialists.

We also have a well-being hub where you can get extra support. You may work with a learning mentor doing things like Lego therapy, art and craft, playing games and learning about friendship. You may even meet Dexter, the dog.

What will I learn at Alt Bridge?

At Alt Bridge you will follow the national curriculum which we adapt to meet your strengths and needs. In Key Stage 4 you will study for qualifications from Entry Level to GCSE.

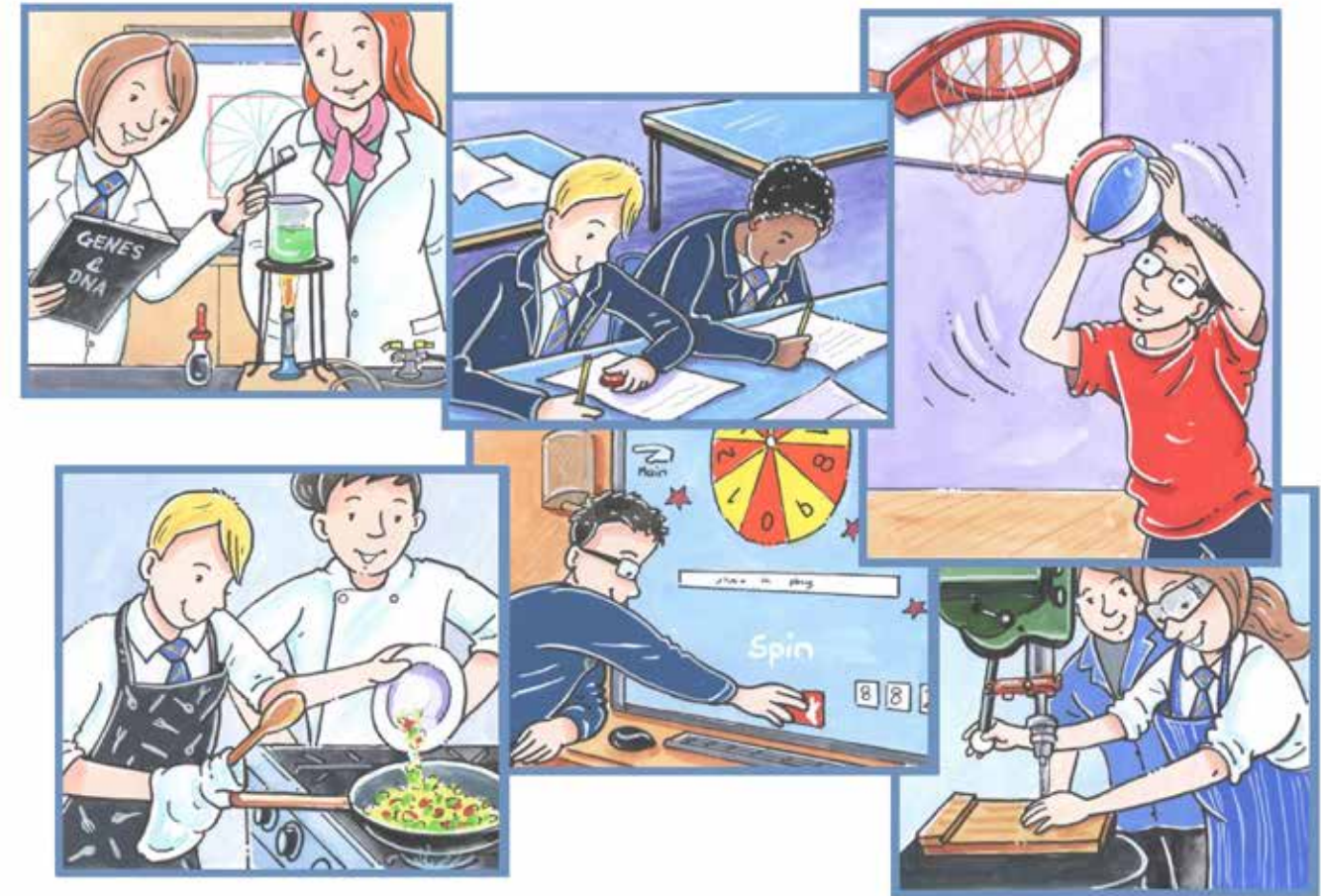
You will also have lessons in life skills that will help you to develop as a person and get ready for work, college and life after school.

What else will I do at Alt Bridge?

As you move up through the school, you will begin working towards your Duke of Edinburgh Bronze Award.

You can also take part in lots of clubs over the lunch break. You can try sports including football, basketball and dodgeball. You can also try yoga, music, dance, film club and lots more.

There is something for everyone and clubs are a great way of making new friends.



How should I behave at Alt Bridge?

At Alt Bridge we have things we think are important (*values*) and they tell us how we should act (*expectations*).

We *care*, so we stay safe, and we are kind to each other.

We think *courtesy* is important, so we are respectful in how we speak to each other.

We are *determined* and *resilient*, so we turn up to school and our lessons ready to do our best and try to join in with everything.

By treating everyone with kindness and respect we help keep Alt Bridge a brilliant school.



What uniform will I wear?

Our school uniform is important because it helps you feel part of our community.

It is also important that you feel comfortable and not restricted by clothing that you don't like wearing.

So you can wear our full uniform, which has a blazer, shirt and tie. Or you can wear a school polo shirt/shirt with a jumper. Boys and girls can wear trousers and girls can also wear skirts or pinafores.

What equipment do I need?

We will give you all the equipment and stationery that you need but you can bring your own pens, pencils and pencil case if you prefer.

How will I get to school?

Most of you will come to school by mini-bus. Your parents or carers will arrange this with the Local Authority.



You don't need to worry about your journey to school. You will be looked after by adults from the time you get on the transport till you arrive at school, where you will be welcomed by school staff.

We can't wait to meet you at Alt Bridge



Alt Bridge School

Wellcroft Road, Huyton, Liverpool, L36 7TA

Telephone: 0151 477 8310

Website: www.altbridgeschool.com

Email: altbridge.de@knowsley.gov.uk