



Jay, Dante and Jamie are  
going to Bristol Gateway School

# Welcome to Bristol Gateway School



2

We know our new pupils may worry about joining a new school so we do lots of things to help you to settle in at Bristol Gateway. Before you start, you will visit us with your parents or carers to get used to the school and get to know your teachers.

Jay is visiting today with his mum. His tutor is showing him the school room and getting to know him.

**"I hear you like history Jay,"** says his teacher.

**"I do. I am really interested in the Romans,"** says Jay.

Our classes are small so you will get to know your tutor and classmates really well.

You will also get the chance to take part in some activities such as sport and craft.

Jamie is enjoying using the boxing equipment.



**Are you looking forward to coming to Bristol Gateway?**

3



## What happens on my first day?



We know how important it is for you to feel happy and settled in your class so we do lots of special activities when you start to help with this.

When you join us, we have a special team-building 'tutor day'. You will do lots of fun activities where you work as a team. This really helps you to get to know your tutor and new friends.

## Are you looking forward to making new friends?

We make sure that you don't go hungry during the day!

We have a breakfast club before you start your lessons.

You can also buy fruit from the tuck shop at break times.

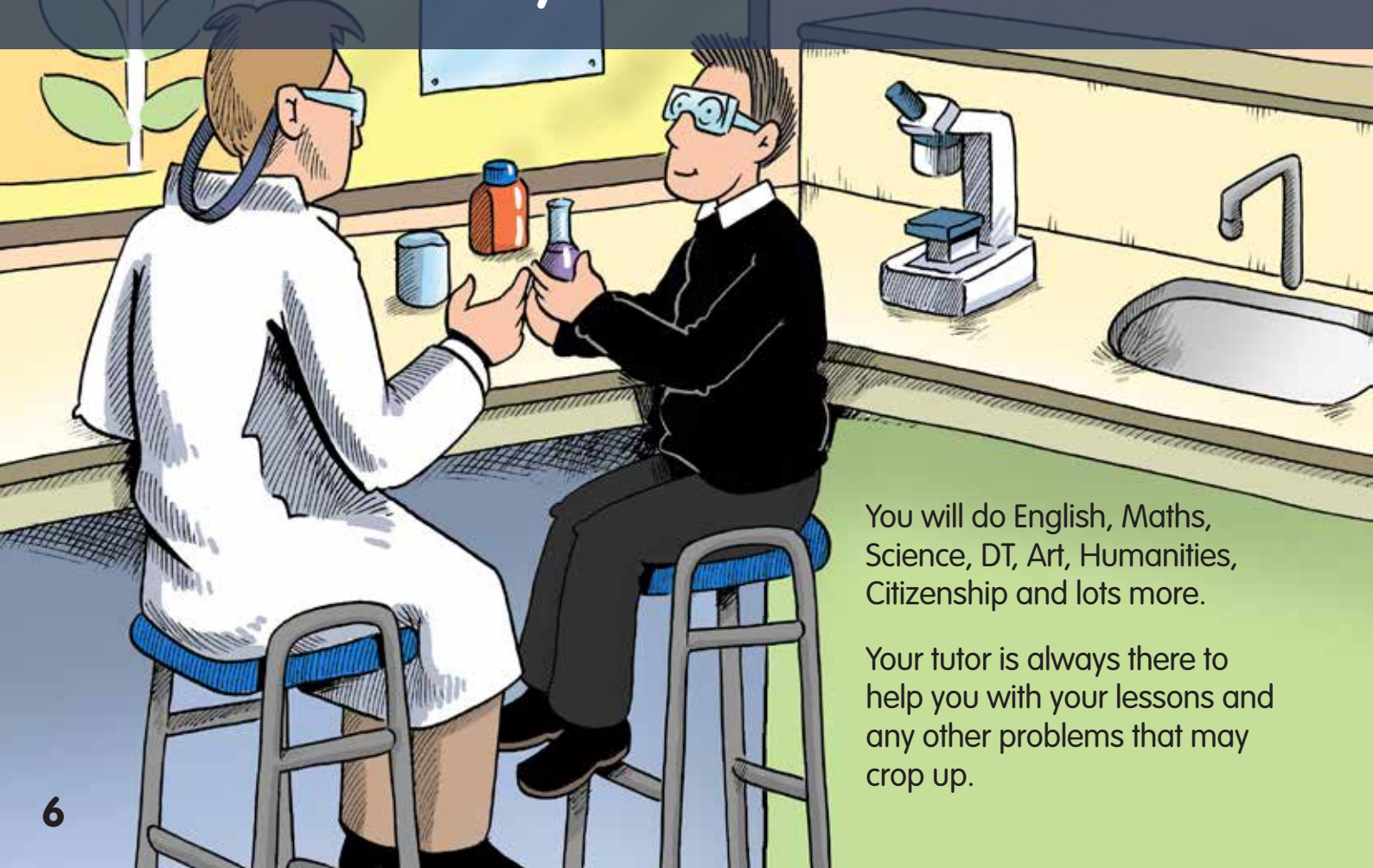
At lunchtime you can have a tasty, filling meal. Our younger pupils have lunch first so that you all have lots of room to enjoy your meal.

Once you have had your meal, you can play outside, or enjoy indoor activities such as using PCs, or playing in the school hall, for the rest of the lunch break.



## What is your favourite food?

## What will I do in my lessons?



You will do English, Maths, Science, DT, Art, Humanities, Citizenship and lots more.

Your tutor is always there to help you with your lessons and any other problems that may crop up.

Jay's tutor is helping him in the Science lesson.

Jay is able to ask him questions about anything he isn't sure about. The class is small so he can have lots of his tutor's time.

You also do activities with your classmates.

Jamie is making some bread. He is showing Jenny how he kneads the dough so that it will rise properly.

**"You have a go now,"** says Jamie.

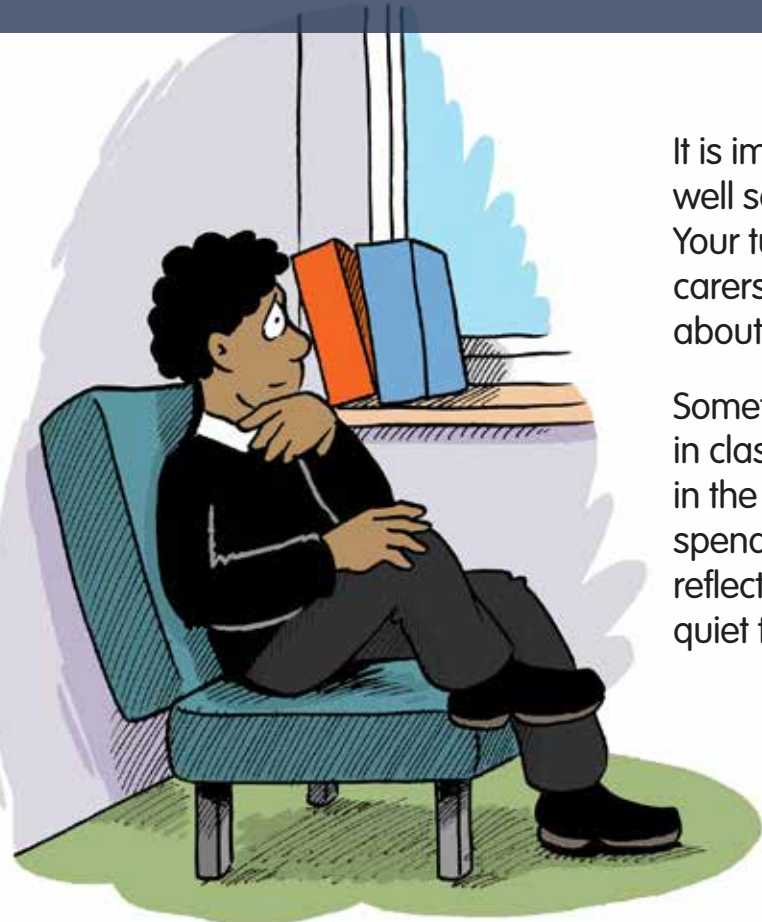
**"That looks fun. Thank you for helping me,"** says Jenny.



## What are your favourite subjects at school?



## What other help will you give me?



It is important that we get to know you really well so we understand how to support you. Your tutors will speak to you, your families or carers and your previous school to find out all about you.

Sometimes our pupils have problems coping in class and we work with you to support you in the best way possible. You may want to spend some quiet time away from the class for reflection. Sometimes you may have regular quiet times built into your day.

We are a kind, supportive community at Bristol Gateway, so all of our staff and pupils will help you. We want you all to be the best you can be, and achieve your full potential!

Dante has had some time out, and he is happy to be back in his class.

He's showing his friend Thomas how to use a program on the PC.

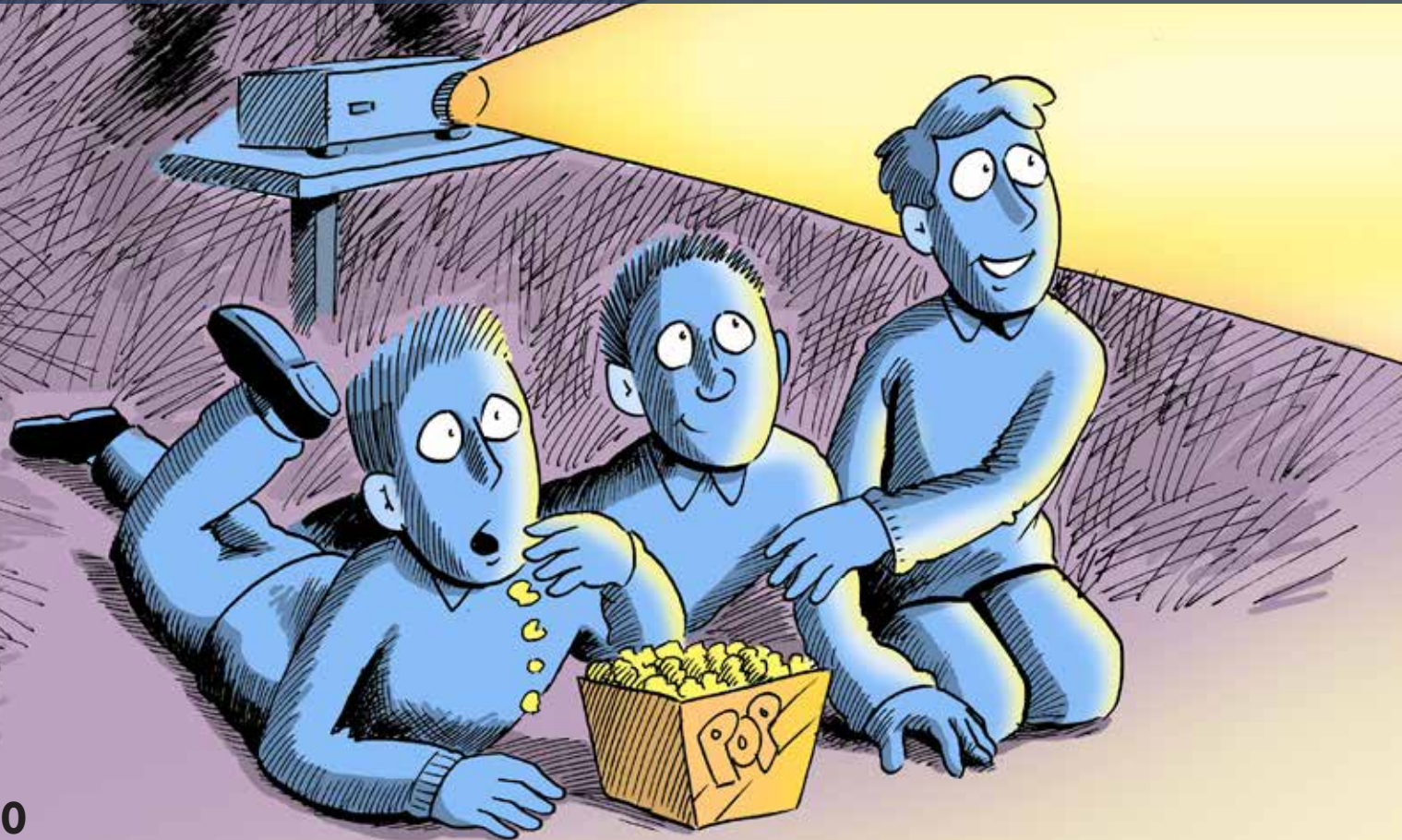


**"It's really easy,"** says Dante. **"I didn't understand it before but I do now thanks to your help,"** says Thomas.

## What help do you think you will need?



## What happens if I have done well?



We want you to do well. You can earn points for good behaviour, good attitude and effort.

At the end of every week, we have 'golden time', where all the pupils who have earned enough points can watch a film and have popcorn.

If you have done well all term, we have even bigger rewards. For example, you can go on special trips to go go-karting or paintballing. Your tutors and classmates know how fantastic these rewards are so they will help you to do well.



**Are you looking forward to earning a reward?**



# Jamie, Jay and Dante love coming to Bristol Gateway School and they think you will too!



Bristol Gateway School  
Long Cross  
Lawrence Weston  
Bristol  
BS11 0QA

Tel: 0117 377 2275  
Email: [bristol.gateway.school@bristol.gov.uk](mailto:bristol.gateway.school@bristol.gov.uk)  
Website: [www.bristolgateway.bristol.sch.uk](http://www.bristolgateway.bristol.sch.uk)



The Woodway Federation  
ACHIEVEMENT • THROUGH • UNITY

