

Welcome to

Fountains High School Post-16

Your Pocket Guide to Starting KS5

Welcome to Fountains Post-16

We have lots of exciting experiences planned for you.

We understand that you may be feeling a mixture of excitement and nerves, but don't worry – everyone is very friendly and there are plenty of people here to support you.

At Fountains, we want you to achieve your full potential, so we expect you to work hard and always try your best.

We have four school values:

Kindness, Wisdom, Bravery, Respect.

These values are the base of our four pillars of success and are at the core of everything you do at Fountains.



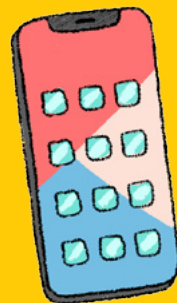
Top Tip It may seem like a lot to take in. But don't worry – you will soon feel at home and know how everything works!

What will I need for my first day?

Equipment

You will need to bring the following equipment with you every day:

- Black or blue ballpoint pen (and a spare)
- Pencil
- Pencil sharpener
- Eraser



Expectations

You will need to wear your lanyard at all times whilst on campus, and remove any hoods, caps or hats when you come inside the college building.

Don't forget to switch your mobile phone off and put it in your bag when you arrive for lessons.



Top Tip Pack your bag the night before and check it against your timetable so you don't forget anything!

What will each day look like?

Each day has five lessons, a morning break and lunchtime. This is what each day will look like:

08:40	Receive Students
08:50	Official Start Time
08:55	Registration
09:00	Lesson 1
09:55	Lesson 2
10:50	Break
11:05	Lesson 3
12:00	Lunch
13:00	Registration
13:05	Lesson 4
14:00	Lesson 5
14:55	Tutorial Time
15:10	End of Day

At lunchtime, if you have permission, you can go off-site into the town of Burton.

Monday

Focussed Learning
English
Maths
In-House Options

Tuesday

GRIT
English
Maths
PSD

Wednesday

Reading
College Options

Thursday

PE
PSHE/RSE
PSD

Friday

Focussed Learning
English
Maths
In-House Options

What can I study during Post-16?

At Fountains, everyone will study English, Maths, GRIT and PSHE/RSE as your core subjects, and have focussed learning sessions.

You will also get to choose from different options:

PE Options

- Football
- Walking
- Gym

College Options

You can choose either an 'All Day' option, or separate AM and PM options.

- Construction (AM)
- Hair & Beauty (AM & PM)
- Photography (PM)
- Motor Vehicle (PM)
- Animal Care & Management (All Day)

In-House Options

- Art
- Food & Hygiene
- Environmental Studies
- Duke of Edinburgh

You can also get involved in work-related learning at our Potting Shed or Coffee Bean Café.



Top Tip Make sure you have breakfast every day so you have lots of energy for the day.

Top Tip Don't worry about getting lost. Just ask another student or adult and they will be happy to help you!

What if I need help?

We all have problems from time to time and it really helps to share your worries. There are lots of adults who can talk to you if you need help or advice.

You can speak to whoever you feel most comfortable talking to, but usually students speak to Shafeen Akhtar (Post-16 Assistant Headteacher) or Holly Lakin (Wellbeing Lead/DSL).

It helps to talk, so don't keep your problems to yourself.



**Top
Tip**

Tell your teacher if you are worried about anything. They will help.

What else can I do at Fountains Post-16?

There are lots of exciting clubs and activities to choose from. You can take part in an activity you love already or try something new.

Termly trips

During each term there are visits to local activities:

- Bowling
- Cinema
- Crazy Golf

Yearly trips

There are also residential and educational trips each year, some in the UK and some abroad:

- Sailing
- Paris, France
- Auschwitz, Poland



**Top
Tip**

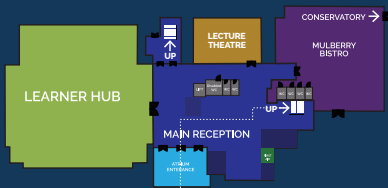
Jump in and join a club as soon as term starts. There is something for everyone and it's a great way of making new friends.

The map shows where our Post-16 subjects are taught on the college campus.

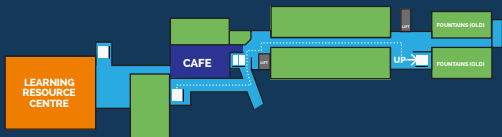
We look forward to seeing you soon!

COLLEGE MAP

GROUND FLOOR



FIRST FLOOR



SECOND FLOOR



Fountains High School

Bitham Lane, Burton upon Trent, DE13 0HB

Tel: 01283 247580

Email: enquiries-high@fountains.staffs.sch.uk

Website: www.fountains-high.staffs.sch.uk