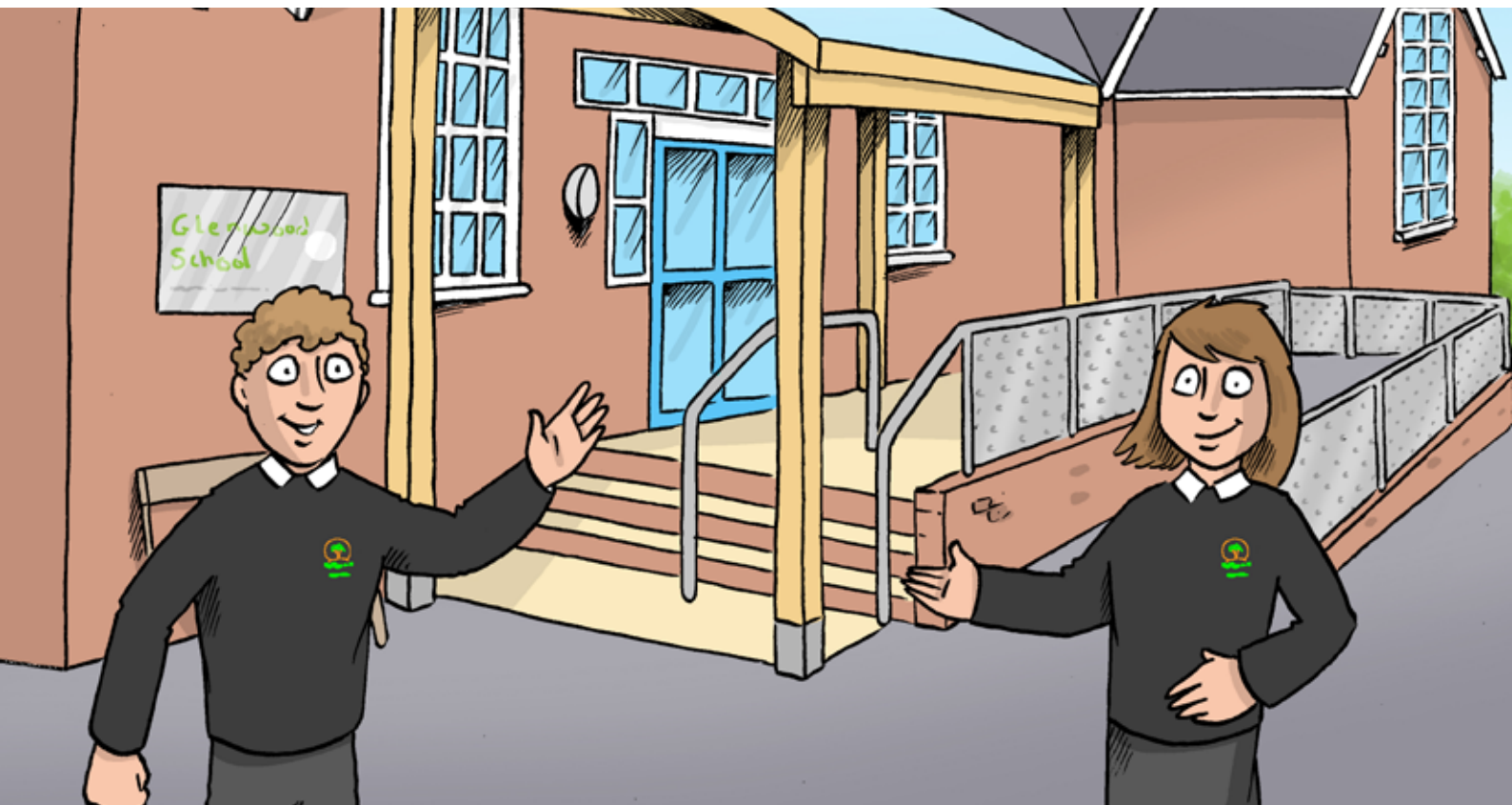


# Welcome to Glenwood School

“Be your best you”



# HOW SHOULD I GET READY FOR MY FIRST DAY?

It is important to wear the correct school uniform from your first day. You should wear:

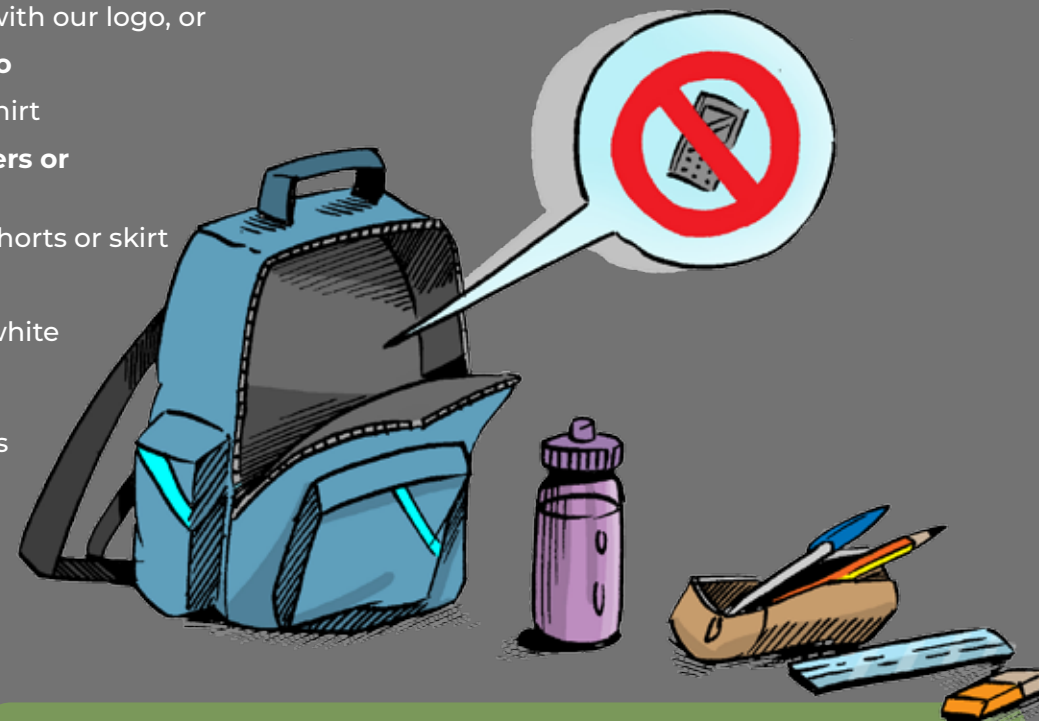
- Glenwood School black jumper with our logo, or
- **Glenwood black fleece with logo**
- Plain white polo shirt or school shirt
- **Black or dark grey school trousers or jogging bottoms, or**
- Knee-length black or dark grey shorts or skirt
- **Black socks**
- Plain black shoes or trainers, or white trainers

The PE kit consists of the Glenwood School PE top and plain black shorts or jogging bottoms.

## EQUIPMENT

You should bring:

- Suitable school bag
- **Refillable water bottle**
- Pencil case
- **Pen**
- Pencil
- **Ruler**
- Eraser



Mobile phones are not allowed in school. If you bring a mobile phone to school, it should be handed to your tutor first thing in the morning. They will lock it in a safe place until the end of the day.

# HOW WILL I GET TO SCHOOL?

Some of you will come by minibus or taxi and some of you will be brought in by your parents or carers.

Pupils who use the minibus will be collected from either home or a bus stop. There will be an adult on the minibus to help keep you safe.

When you arrive at school, staff wearing hi-vis jackets will meet you at the side gate. You will go straight to your tutor group.

At the end of the school day, a member of staff will take you to your minibus. It will drop you off at the same place that you got on.



## What happens at the start of the day?

When you go into school, you will hang up your coat and bag on a peg outside your tutor room. You will join your tutor group and your tutor will take daily registration, go through your timetable, take your lunch choices and give you any important information about your day.

# WHAT WILL I DO IN SCHOOL?

The school day starts at 8.45am and finishes at 3pm.

You will study:

- **Art**
- **Computing**
- **Design Technology**
- **Drama**
- **English**
- **Food Technology**
- **Humanities**
- **Land-based Studies**
- **Life Skills**
- **Maths**
- **Music**
- **PE**
- **PHSRE**
- **Science**
- **Social Use of Language Programme (SULP)**



## Life Skills

In Life Skills, you will go out of school on a trip on one afternoon every week. Sometimes this will be on the minibus. You will visit lots of community places such as parks, libraries, shops, cafes, museums and leisure centres. Sometimes you will be able to bring a small amount of money to buy a snack or drink. You will learn important skills such as how to cross the road safely, how to travel on public transport and budgeting and money skills. You will also practise the skills you have learnt in all of your other subjects in real-life situations.

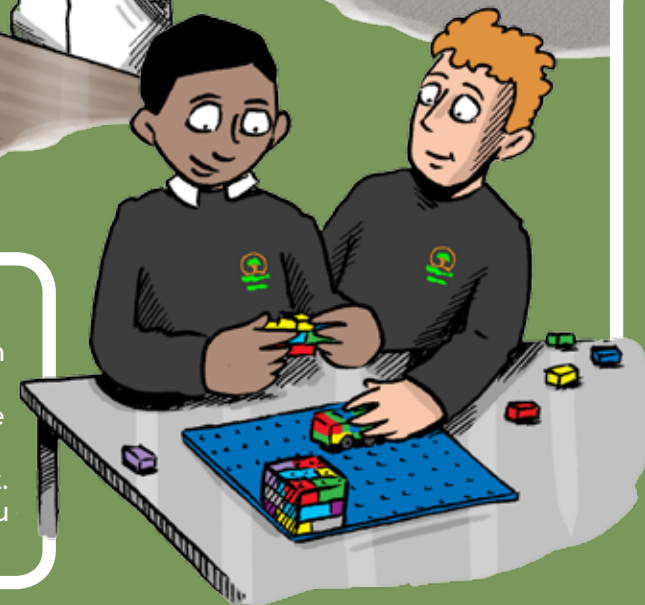
## READY TO LEARN

You will start each day with a Ready to Learn session to help you remain calm and alert during the day. These sessions include walking the Daily Mile, yoga, exercising or sensory and calming activities.



## CLUBS

Clubs run between 3pm and 4pm on Mondays, Tuesdays and Thursdays. Clubs change each term and include football, tennis, cooking, art, GCSE study, Hama Beads and diamond art. Your parents or carers will collect you at 4pm.



## FOOD FOR THOUGHT

Every day, after break, you will return to your tutor for a Food for Thought session, where you will enjoy a healthy snack and a drink while you do some reading.



# WHAT IS EXPECTED OF ME?

These are our values at Glenwood School:



## BEHAVIOUR

You should follow our Pupil Code of Conduct to:

- Try your best in every lesson.
- **Show each other respect.**
- Listen to what other people have to say.
- **Work together.**
- Have good manners.
- **Walk calmly around school.**
- Be kind to one another.
- **Celebrate each other's successes.**
- Always do the right thing.
- **Make it possible for all pupils to learn in class.**
- Treat the school building and property with respect.
- **Always wear the correct school uniform.**
- Learn to take responsibility for your actions.

## REWARDS

You will earn points when you behave well in lessons. These points will go towards prizes that you can choose yourself. We will also write to or ring your parents or carers when you do well. You will also be given special responsibilities and privileges and certificates in our Friday celebration assemblies.

Pupils with 100% attendance or most improved attendance will be invited to a special afternoon tea with the Headteacher.

## HOUSES

When you join Glenwood, you will become a member of one of our houses. They are named after historical Royal Navy ships:

- Victory
- Ark Royal
- Warrior
- Britannia



You will stay in your house throughout your time at Glenwood. There are lots of ways you can earn points for your house, such as being awarded Pupil of The Week or Form, or completing the Daily Mile. You may also win points for doing well at sports day or taking part in annual sponsored events, which may involve assault courses, Readathons or sponsored walks. At the end of the year, the house with the most points will win the Glenwood Cup.



# WHAT EXTRA HELP WILL I GET AT GLENWOOD?

## WELLBEING

Some of you may need some extra support at Glenwood to help you make progress in your learning. This can include Speech and Language Therapy, extra reading lessons, one-to-one English or maths activities or individual music lessons.

If you need extra help with your emotional well-being then you might have one-to-one ELSA sessions, Nurture Group, Lego therapy, Art therapy, or you might get to spend some time with one of our therapy dogs.

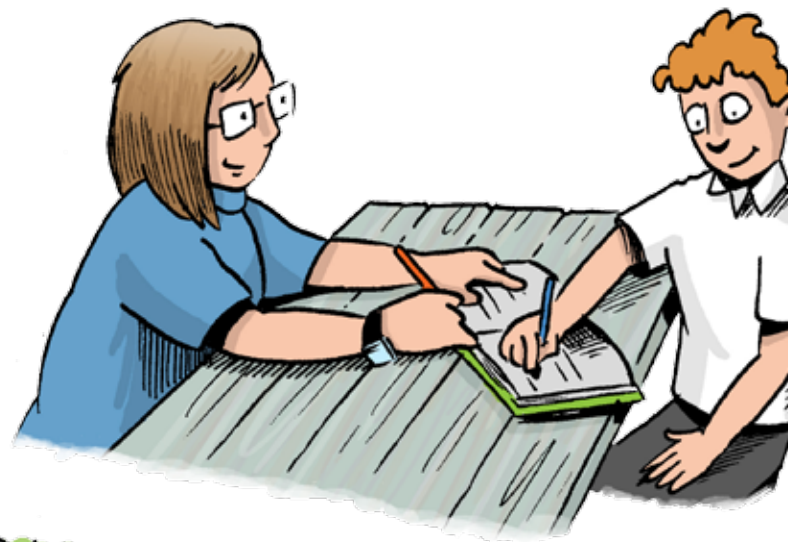


## NUTURE GROUP

We run a Nurture Group for pupils in Years 7 and 8 who need to develop more confidence in their learning. During these sessions, we do lots of fun activities to help you get better at expressing yourself and your feelings, learn how to take responsibility for your actions, make new friends and be more resilient.

## WHO SHOULD I SPEAK TO IF I AM WORRIED OR NEED HELP?

Every pupil has a key person. This is usually a staff member from your tutor group. They will check in on you regularly, and you can talk to them about anything. You can also chat with your tutor or any other adult at school who you trust. There are always lots of staff on duty at break or lunchtimes who you can go to if you need help or feel unwell.





## WHAT HAPPENS AT BREAK AND LUNCHTIME?

You can play football on the field or at our multi-use games area, or play basketball on the playground. You can also burn off energy using our outside exercise machines or playing on the monkey bars.

If you prefer, you can sit and talk to your friends in our peaceful picnic area.

Or you can stay inside in one of our open rooms, where you can work or play games.



At lunchtime, you can join in a game or activity organised by a staff member, such as New Age Kurling or parachute games.

If you have a school lunch, you can choose from our delicious menu, which includes hot and cold and vegetarian or vegan options. You can choose from sandwiches and wraps, burgers, pizza, pasta, quiche or a roast dinner. There is something different every day.

You will collect your lunch from the hall and can eat it there or outside in the picnic area. If you would like to eat somewhere quiet, there is a special room where you can go.

If you have brought a packed lunch, you can eat it in the hall, quiet room or picnic area.



## WHAT HAPPENS AT THE END OF THE DAY?

You will return to your tutor group at the end of each day to collect your belongings before you go out to your transport group. You will wait in your transport group in the quiet area. When your minibus or taxi is ready, a staff member will take you to meet your adult escort.



If your parents or carers collect you, you will wait in the hall. A member of staff will collect you from there and take you to the front of the school to make sure you leave safely with an adult.





**We look forward to meeting you soon!**



**GLENWOOD SCHOOL**

Washington Rd,  
Emsworth,  
PO10 7NN

**Tel:** 01243 373120  
**Email:** [adminoffice@glenwood.hants.sch.uk](mailto:adminoffice@glenwood.hants.sch.uk)  
**Website:** [www.glenwoodschoolemsworth.co.uk](http://www.glenwoodschoolemsworth.co.uk)

Find us on Facebook



**GlenwoodSchoolEmsworth**

Devised and produced by Stoneworks Education Ltd [www.stoneworkseducation.co.uk](http://www.stoneworkseducation.co.uk)

© Stoneworks Education Limited 2014-2023. All rights reserved.