

Danny, Afia, Joe and Raya love going to Knightsfield School



Knightsfield
School

Specialist Sensory Academy





Welcome to Knightsfield School

There will be an introductory day.
This will help you get used to Knightsfield School.

Teachers will help you find your way to
your next lesson. They will help you
remember everyone's names.

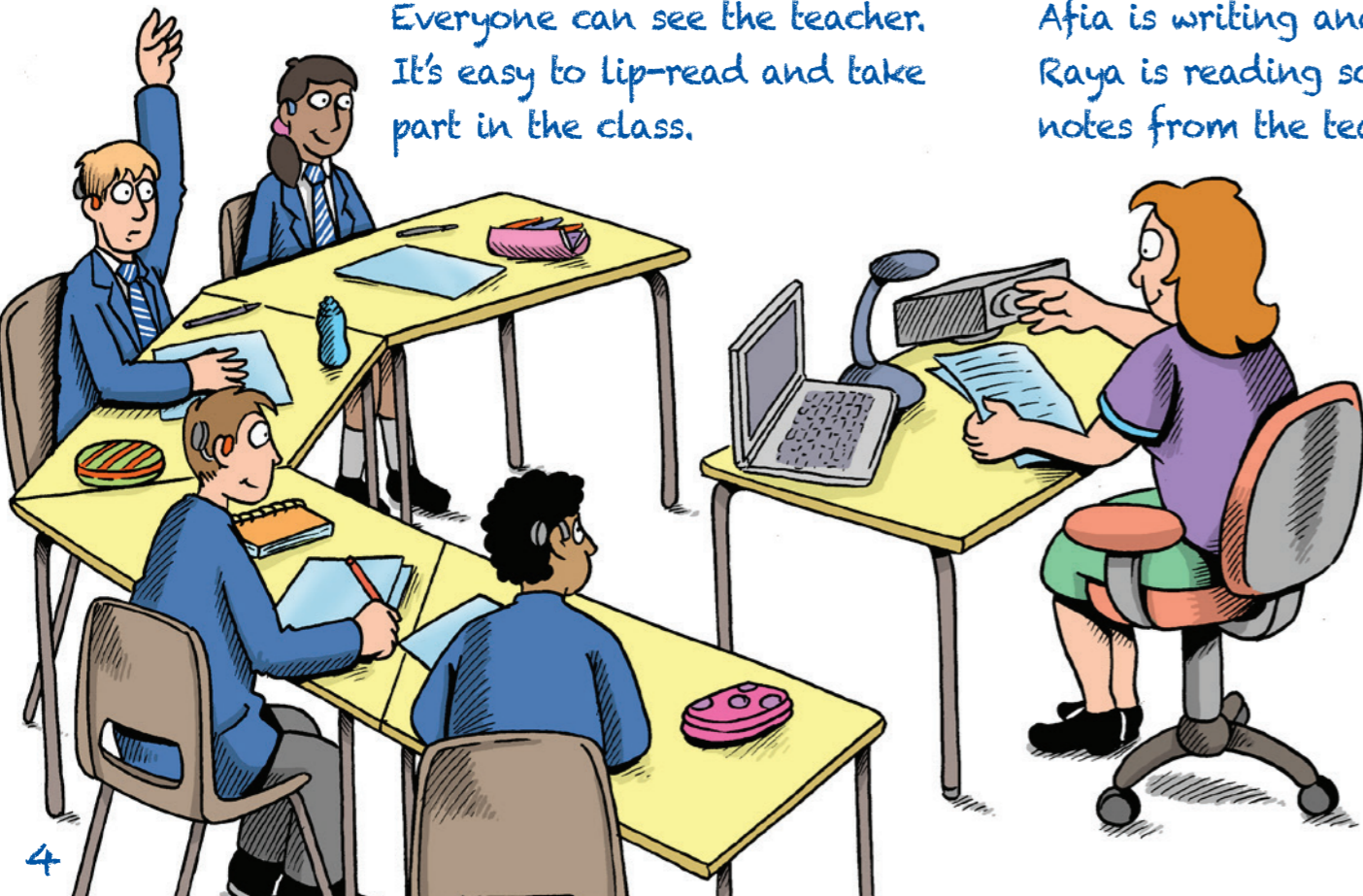
It's very easy to
make friends. All the
children are deaf ...
so everyone is like you.



You will fit in really quickly

Everyone can see the teacher.
It's easy to lip-read and take
part in the class.

Afia is writing and
Raya is reading some
notes from the teacher.



You will settle in easily and
quickly, because we are a small
school.

Everyone is super friendly
at Knightsfield School, and
here to help you.

Teachers get to
know you really well.
They will help you
do your best.

That's a really funny joke
Danny. You're great fun
to be with.





Swimming



Baking



Science

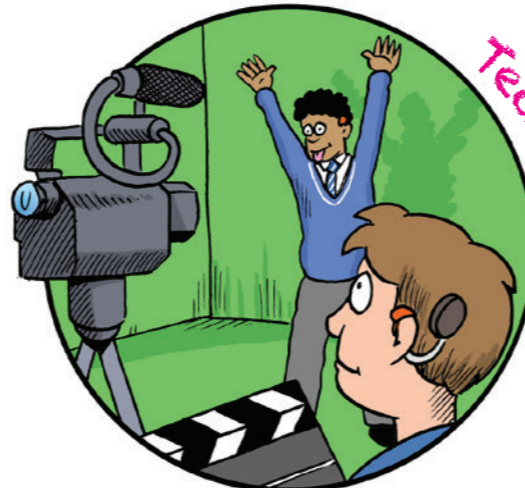
Are



What we do at Knightsfield

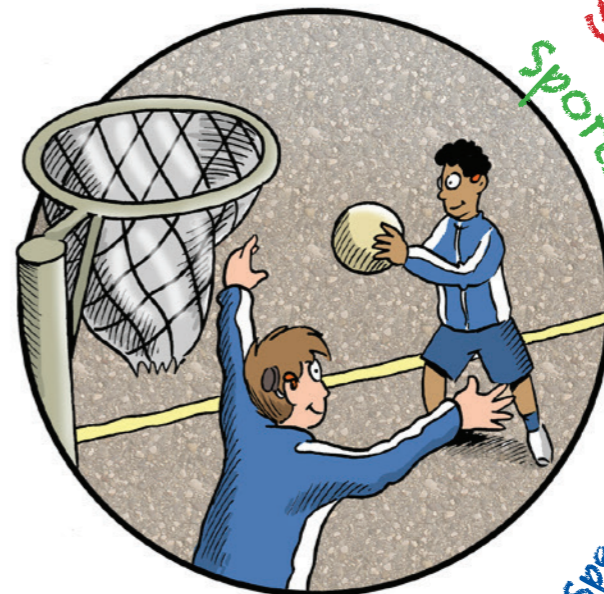
And lots more, including...

- Design and Technology
- English
- German
- Humanities
- ICT and Computing
- Maths
- Music
- PE
- PSHCE
- Activities Week
- Educational trips to the theatre and London etc.
- Film Club
- Gardening Club
- Theatre Week and Show



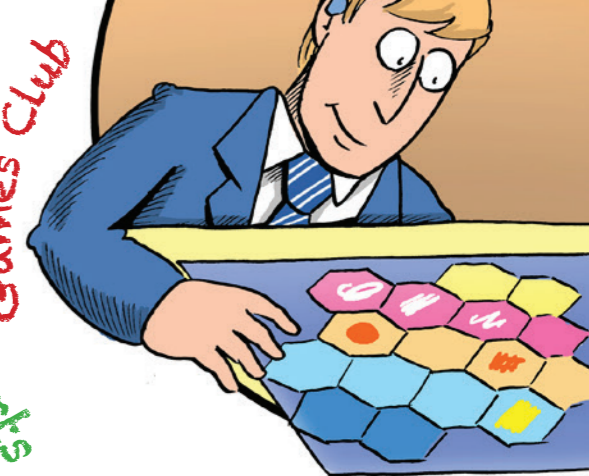
Technology

There are lots of exciting things to do at Knightsfield School...



Sports

Games Club



Speech and Language Therapy

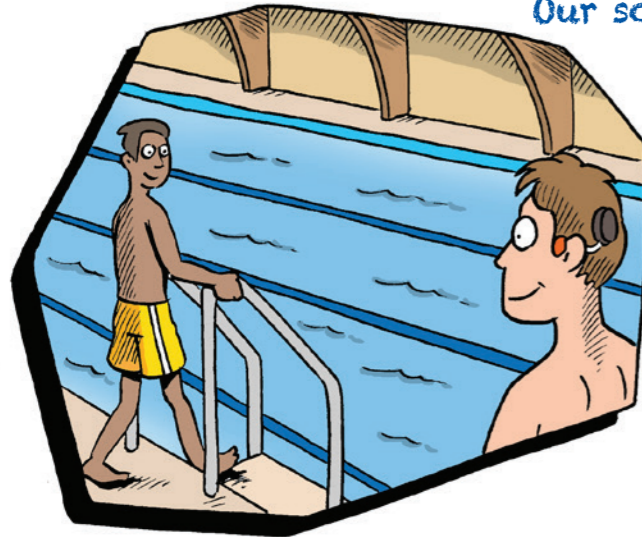


Life at Knightsfield is lots of fun!

Our Links with Monk's Walk School

Our school is next door to Monk's Walk School.

You will go to P.E. lessons in Monk's Walk School with your class. There is a swimming pool, a gym, a large football pitch, basket ball courts and tennis courts.



You will also go to one Art lesson and one Drama lesson at Monk's Walk School. A teaching assistant will go with you to help you. Monk's Walk School pupils are friendly and helpful.



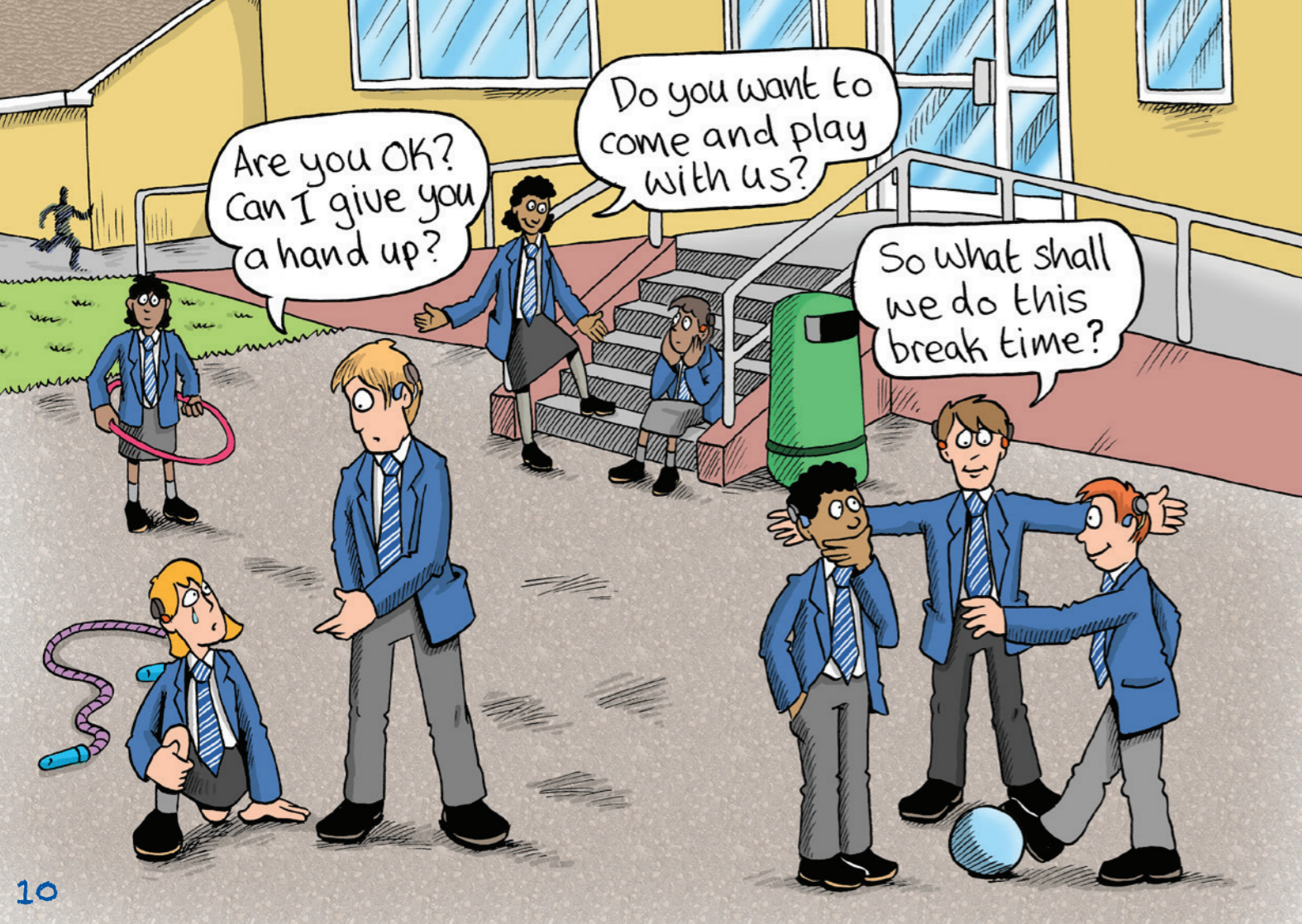
Having hearing and listening checks

Your form tutor will check your hearing aids or cochlear implants every day.

You will have a radio hearing aid to help you hear in all lessons. Every teacher wears a microphone. You will wear receivers.

You will have listening tests once a year. You will have a target to help you improve your listening skills.





What we expect from each other at school

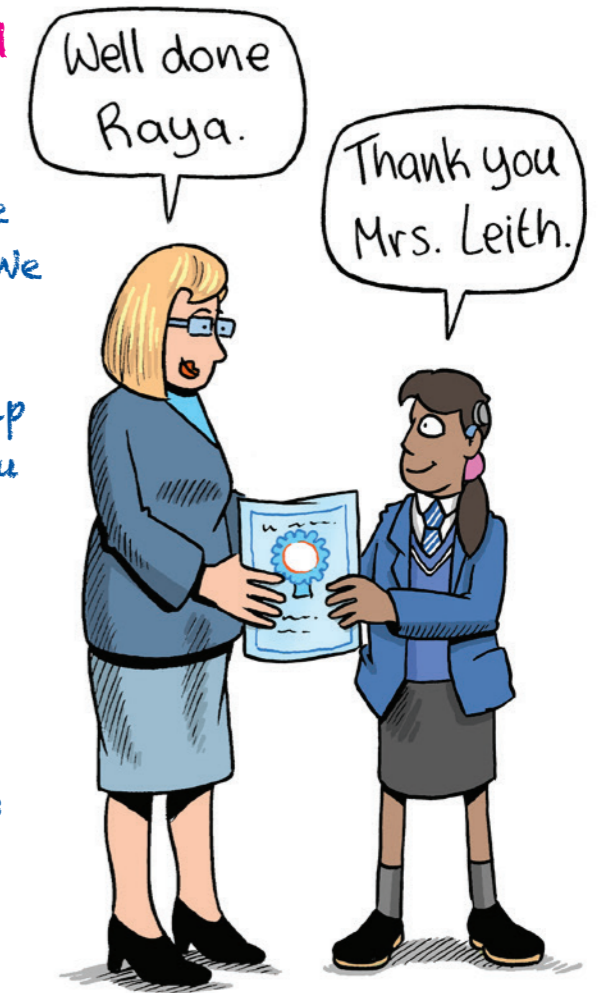
We ask you to be polite and friendly. We expect you to show respect to everyone. We ask you to give your best at all times.

We help you to do well at school. We help you to learn new vocabulary. We give you points and certificates for hard work.

You can get a Bronze, Silver, Gold and Platinum certificate.

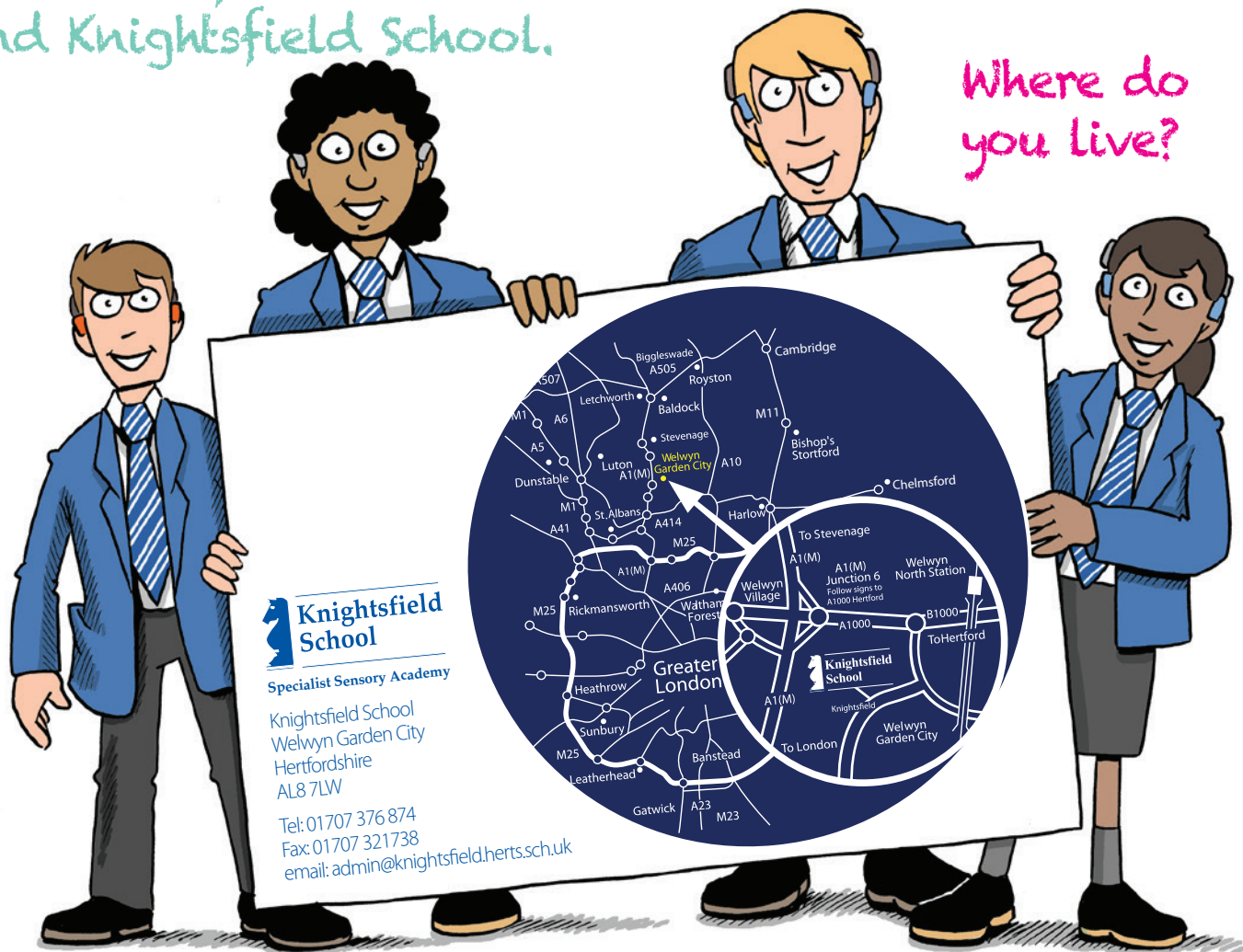
Every term, there is a Star Pupil Award. This is for helping other pupils. Raya has won this award.

Do you try your best to work hard?



Pupils come from all over to attend Knightsfield School.

Where do you live?



Knightsfield School
Specialist Sensory Academy

Knightsfield School
Welwyn Garden City
Hertfordshire
AL8 7LW

Tel: 01707 376 874
Fax: 01707 321738
email: admin@knightsfield.herts.sch.uk