

We are coming to Rivermead School!



How will Rivermead help me settle in?

We know that starting at a new school can be daunting, so we make it as easy and stress-free for you as possible.



We have two transition days during the summer term in Year 6, when you visit us, become familiar with the buildings, and meet your new friends and teachers.

We also have an induction week during the summer holidays, when you can try out fun activities and get to know your classmates and school staff in a relaxed and friendly environment.



Are you looking forward to coming to Rivermead?

How will you look after me at Rivermead?

We have a kind, calm atmosphere at Rivermead which can help you to concentrate better.

And we have small classes so you get lots of teacher time.

We start each day with a SEAL (Social and Emotional Aspects of Learning) lesson. These lessons help your teachers to get to know you well.



There will be lots of opportunities to make some brilliant new friends who will understand you, so don't worry if you don't know anyone when you join us.

Your teachers will be around at break times to support you.

Everyone at Rivermead will be working with you to help you be the best you can be.



What will I do at Rivermead?

We follow the National Curriculum, which is tailored to meet your needs and your strengths. We work towards a range of GCSE qualifications.



It is not just about English, Maths, Reading and Science... we also think about developing skills for team building and many other exciting activities.



We have lots of clubs such as Rock Climbing, Trampolining, Lego, ICT, Gardening, card games (Yu-Gi-Oh! and Magic) and Gymnastics.

We also have Enrichment days when the whole school will work together! Previous topics have included: India, Unusual Sports, the Environment and Enterprise.



Many of our topics are linked to visits. Trips might include art galleries, museums, places of interest or even the cinema!

How should I behave at Rivermead?

We have clear, simple rules which help to make Rivermead a friendly, supportive place to learn and grow in:

We believe that every young person, whatever their age or ability, has the potential to progress, academically and as a well-rounded young adult.

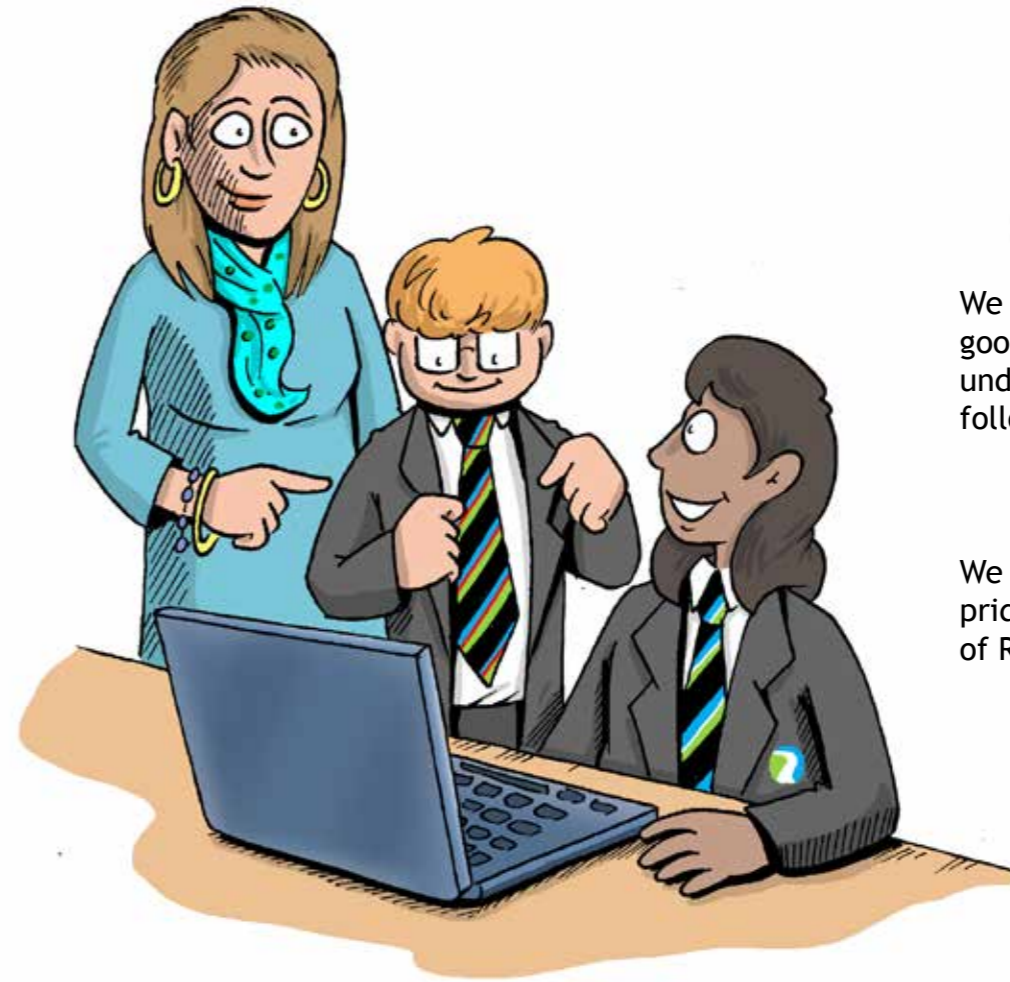
We believe that an inclusive approach is achieved through holistic and individualised pathways to teaching and learning.

We believe that every achievement should be shared and celebrated.

We believe that the inclusion of staff, parents, governors, the wider community and learners should create a 'sense of belonging'.

We believe that a safe, calm and nurturing environment, where respect for each other is paramount, is the best place to learn and succeed.

We believe that Rivermead embeds and believes in the importance of social, moral, spiritual, and cultural life in modern Britain. We celebrate this through enrichment, the broad curriculum, daily SEAL, thought for the week, PSHE and daily assemblies.



We have expectations of good behaviour and we all understand the importance of following adult instructions.

We wear our uniform with pride and we are all proud of Rivermead.

What happens when I leave Rivermead?



In Year 12 you will have the choice to apply for a place in our Sixth Form, which is based at MidKent College, or you can move to study independently. At the end of Year 12 you will go into work or further study.

We help you to become confident and independent by teaching you the skills you need for life. These skills are to prepare you for travelling, cooking and budgeting as independently as possible.

We are always pleased to hear how you are getting along once you have left our school and are proud to hear of your achievements.

We can't wait to get to know you and help you to become the best you can be!



Come and join the adventures at Rivermead School!



Rivermead School
Forge Lane, Gillingham, Kent, ME7 1UG
Telephone: 01634 338348 (answerphone available for out of hours)
Fax: 01634 338347
Email: office@rivermead.medway.sch.uk
Web: <http://www.rivermead.org.uk>

Devised and produced by Stoneworks Education Ltd www.stoneworkscommunications.co.uk/Education

